

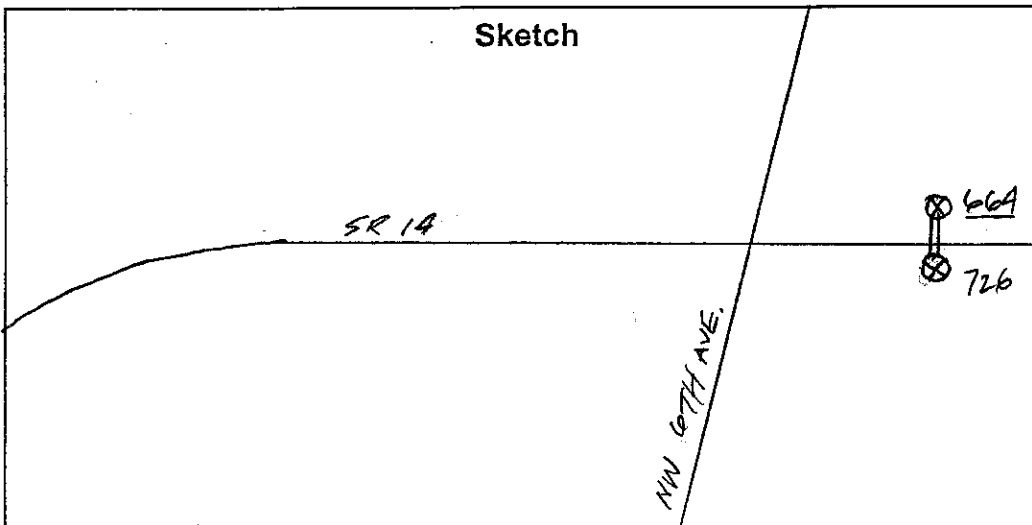
GK Traffic Counter

Interval 60 Min. 15 Min.
 2 Tube Classification
 Lane No. 1 2
 1 Channel Tube A+B
 2 Channel Tube A, B
 Direction Channel A _____
 Direction Channel B _____
 Module No. 14037

Counter No. 664 644 Count ID HPMS
 SR 14 RRT _____ MP 12.49
 Leg 2 Direction WB OSID _____

Station Description - ON SR 14 E/O ^{NW} 6TH AVE I/C

Date	Day	Time	Comments
9-15-2003	2	1251	Manual A <u>23</u> B _____ Counter A <u>23</u> B _____ SET CTR. OK CJ/RD 6.2
9-16-2003	3	0925	Manual A <u>25</u> B _____ Counter A <u>25</u> B _____ CHK CTR OK CJ/RD 6.2
9-17	4	1025	Manual A _____ B _____ Counter A _____ B _____ TUBE CHECK OK CJ/RD
9-18	5	1106	Manual A <u>22</u> B _____ Counter A <u>22</u> B _____ CHK CTR. OK CJ/RD 6.2
9-19	6	1053	Manual A <u>5</u> B _____ Counter A <u>5</u> B _____ Pidi CTR. OK CJ/RD 6.1



CHRIS J. / ROB 17.

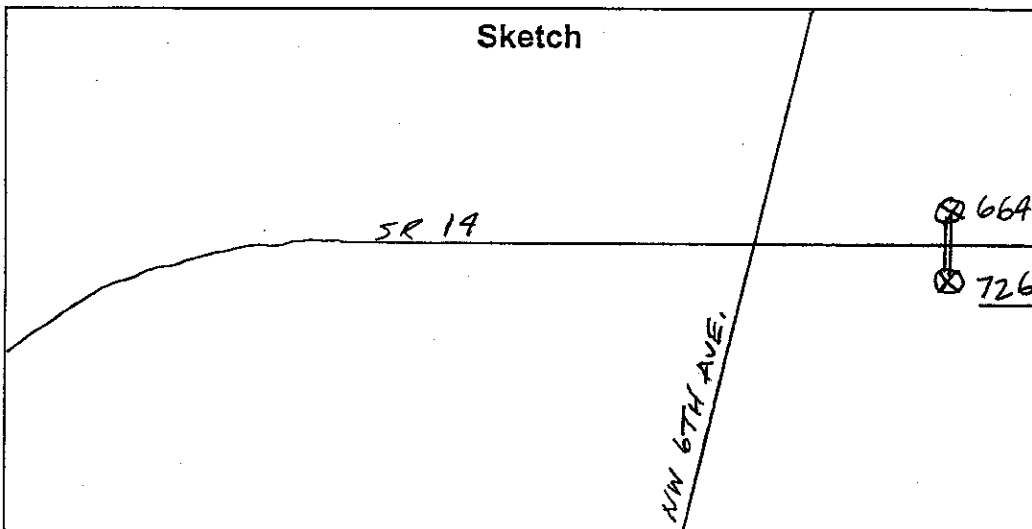
GK Traffic Counter

Interval 60 Min. 15 Min.
 2 Tube Classification
 Lane No. 1 2
 1 Channel Tube A+B
 2 Channel Tube A, B
 Direction Channel A _____
 Direction Channel B _____
 Module No. 21483

Counter No. 726 Count ID HPMS
 SR 14 RRT _____ MP 12.49
 Leg 2 Direction EB OSID _____

Station Description - ON SR 14 E/O^{NW} 6TH AVE I/C

Date	Day	Time	Comments
9-15-2003	2	1247	Manual A 20 B Counter A 20 B SET CTR OK CS/RD 6.5
9-16-2003	3	0925	Manual A 25 B Counter A 25 B CHK CTR CS/RD 6.6
9-17	4	1025	Manual A B Counter A B TUBE CHECK OK CS/RD
9-18	5	1106	Manual A 20 B Counter A 20 B CHK CTR OK CS/RD 6.5
9-19	6	1053	Manual A 5 B Counter A 5 B P.U. CTR OK CS/RD 6.5



CHRIS J./ROB J.

Field Person

DOT-RNB505A-B

STATE OF WASHINGTON - DEPARTMENT OF TRANSPORTATION
TRIP SYSTEM
HOURLY TRAFFIC CLASSIFICATION SUMMARY

DATE 12/05/03
TIME 05:59:03
PAGE 1

SR 014 MP 012.49 OFF SYSTEM ID. LEG 2 DIRECTION OF TRAFFIC WESTBOUND LANE ALL OF

COUNT IDENTIFIER HPMS COUNTER NUMBER 000644 DESCRIPTION: ON SR 14 E/O NW 6TH AVE I/C

09-15-03	CARS PICKUPS	BUS	SINGLE MED	UNITS HVY	4+	SINGLE UNIT %	DOUBLE 4-	DOUBLE 5	DOUBLE 6+	DOUBLE UNIT %	5-	TRAINS 6	TRAINS 7+	TRAIN %	TRUCK %	CLASS UNKNOWN	TOTAL VEHICLES
MONDAY																	
AM HOURS																	
12 - 1	578	23	71	12	1	14.3	19	24	9	6.9			1	1.7	22.9		750
1 - 2	546	9	61	7		11.4	19	22	3	6.5		1	10	1.6	19.5		678
2 - 3	638	12	82	10		13.2	21	8	6	4.5	1	7	10	1.0	18.7		785
3 - 4	685	7	78	7		11.1	22	12	6	4.8		14	7	1.7	17.6		831
4 - 5	639	2	65	4	1	9.6	10	10	7	3.9		7	7	.9	14.5		747
5 - 6	479	3	47	3	2	9.8	10	11	2	4.1		6	6	1.2	15.1		564
6 - 7	323	2	26	2		7.4	15	8	3	6.1		2	2	1.6	15.0		380
7 - 8	259	2	28	3		10.6	5	9	3	5.5		3	3	.6	16.7		311
8 - 9	159	2	8	2		5.5	2	7	1	5.0		1	1	1.7	12.2		181
9 - 10	132	2	10	1		8.6	1	4	1	3.9		1	1	.7	13.2		152
10 - 11	78		5	1		6.3	2	6	2	10.5			1	1.1	17.9		95
11 - 12																	
AM TOTAL	4516	60	481	52	4	10.9	128	121	39	5.3	1	2	70	1.3	17.5		5474
PM TOTAL	4516	60	481	52	4	10.9	128	121	39	5.3	1	2	70	1.3	17.5		5474
DAY TOTAL	4516	60	481	52	4	10.9	128	121	39	5.3	1	2	70	1.3	17.5		5474
																2-AXLE EQUIVALENT	6072

DOT-RNB505A-B

STATE OF WASHINGTON - DEPARTMENT OF TRANSPORTATION
TRIP SYSTEM
HOURLY TRAFFIC CLASSIFICATION SUMMARY

DATE 12/05/03
TIME 05:59:03
PAGE 2

SR 014 MP 012.49 OFF SYSTEM ID. LEG 2 DIRECTION OF TRAFFIC WESTBOUND LANE ALL OF

COUNT IDENTIFIER HPMS COUNTER NUMBER 000644 DESCRIPTION: ON SR 14 E/O NW 6TH AVE I/C

DAY	TOTAL	CARS PICKUPS	BUS	SINGLE MED	HVS	4+	SINGLE UNIT %	DOUBLE 4-	DOUBLE 5	DOUBLE 6+	DOUBLE UNIT %	5-	TRAINS 6	TRAINS 7+	TRAIN %	TRUCK %	CLASS UNKNOWN	TOTAL VEHICLES	
																			AM HOURS
09-16-03																			
TUESDAY																			
12 - 1	64	1	2	6	1	2	5.3	1	3	1	6.7		1	1	2.7	14.7		75	
1 - 2	43	2	2	3	1	3	15.5	1	4	1	8.6		1	1	1.7	25.9		58	
2 - 3	30	3	2	3	1	3	11.4	2	3	2	15.9		1	2	4.5	31.8		44	
3 - 4	42	1	1	3	1	6	7.3	2	6	2	14.5		1	1	1.8	23.6		55	
4 - 5	137	1	1	11	1	6	8.0	2	6	2	6.2		1	1	1.2	15.4		162	
5 - 6	407	3	3	40	3	9	9.8	5	9	1	3.4		1	2	4	13.6		471	
6 - 7	769	1	1	83	3	9	10.0	5	9	2	2.2		1	14	1.6	13.4		888	
7 - 8	912	2	2	89	2	8	9.1	7	8	2	1.8		1	8	1.9	12.2		1039	
8 - 9	730	9	9	61	6	19	9.0	9	16	4	3.5		1	11	1.3	13.8		847	
9 - 10	548	10	10	84	9	16	15.1	7	21	8	4.7		1	16	2.4	22.2		704	
10 - 11	474	12	12	52	8	21	12.3	13	16	8	7.1		1	4	1.7	20.1		593	
11 - 12	485	8	8	71	11	21	14.5	25	21	8	8.4		1	11	1.7	24.6		643	
PM HOURS																			
12 - 1	514	7	7	79	10	22	14.8	15	22	6	6.5		2	7	1.1	22.4		662	
1 - 2	549	10	10	70	7	20	12.9	15	20	5	5.8		1	8	1.5	20.2		688	
2 - 3	549	7	7	63	4	14	11.3	20	14	8	6.2		1	11	1.9	19.4		681	
3 - 4	662	5	5	99	8	13	13.5	28	13	9	6.0		1	6	1.7	20.2		830	
4 - 5	663	5	5	99	9	11	14.1	13	11	4	3.4		1	8	1.1	18.7		815	
5 - 6	634	2	2	62	4	7	9.4	10	7	3	1.9		1	10	1.4	12.7		726	
6 - 7	482	1	1	45	3	12	8.8	8	12	1	4.4		1	8	1.6	14.8		566	
7 - 8	302	5	5	19	3	8	8.0	8	8	1	4.9		1	1	2.8	13.2		348	
8 - 9	250	2	2	16	1	7	6.6	4	7	1	4.2		1	8	2.8	13.5		289	
9 - 10	158	2	2	9	1	3	6.1	1	3	1	2.8		1	5	2.8	11.7		179	
10 - 11	104	1	1	8	1	3	8.3	1	3	1	3.3		1	3	2.5	14.0		121	
11 - 12	90	1	1	8	1	5	8.3	5	5	2	6.5		1	2	1.9	16.7		108	
AM TOTAL	4641	52	52	505	45	11	11.0	80	125	44	4.5		5	71	1.4	16.8		5579	
PM TOTAL	4957	47	47	577	51	11	11.4	120	125	42	4.8		4	77	1.4	17.6		6013	
DAY TOTAL	9598	99	99	1082	96	22	11.2	200	250	86	4.6		2	9	1.4	17.2	2-AXLE EQUIVALENT	11592	

SR 014 MP 012.49 OFF SYSTEM ID. COUNTER NUMBER 000644 LEG 2 DIRECTION OF TRAFFIC WESTBOUND LANE ALL OF
COUNT IDENTIFIER HPMS DESCRIPTION: ON SR 14 E/O NW 6TH AVE I/C

DAY	AM HOURS	PM HOURS	CARS PICKUPS	BUS	SINGLE MED	UNITS HVY	4+	SINGLE UNIT %	DOUBLE 4-	DOUBLE 5	DOUBLE 6+	DOUBLE UNIT %	5-	TRAINS 6	TRAINS 7+	TRAIN %	TRUCK %	CLASS UNKNOWN	TOTAL VEHICLES
09-17-03	12 - 1	1	62	1	1	1	1	2.8	2	4	1	9.9					12.7		71
WEDNESDAY	1 - 2	2	27		4			17.5				10.0				5.0	32.5		40
AM HOURS	2 - 3	3	22		2			5.7	1	5	2	22.9				8.6	37.1		35
	3 - 4	4	34		6			15.6		2	2	8.9					24.4		45
	4 - 5	5	134	2	6			5.9	2	2	1	3.3					11.8		152
	5 - 6	6	405	2	45			10.3	2	8	3	3.8					14.7		477
	6 - 7	7	791	4	98			11.4	9	8	5	2.4	1	1		0.9	15.1		927
	7 - 8	8	882	8	87			9.8	15	11	3	3.6				1.4	14.0		1025
	8 - 9	9	753	13	69			10.4	10	19	3	5.9				1.5	15.5		891
	9 - 10	10	558	13	62			12.0	18	17	6	5.3				2.1	20.1		698
	10 - 11	11	528	15	54			11.9	10	17	8	5.3				2.1	19.4		655
	11 - 12	12	474	5	62			12.6	18	22	7	7.7				1.8	22.2		609
PM HOURS	12 - 1	1	564	15	81			14.4	17	29	4	6.8				1.6	22.8		731
	1 - 2	2	572	14	74			13.6	19	22	12	7.2				1.9	22.7		740
	2 - 3	3	554	17	64			13.0	17	14	14	4.9				2.2	20.1		693
	3 - 4	4	677	14	81			12.6	21	12	10	4.5		1		1.2	18.2		828
	4 - 5	5	628	4	78			11.9	22	9	3	4.4				1.6	17.9		765
	5 - 6	6	713	3	70			9.8	19	6	2	3.7	1	1		1.1	14.1		830
	6 - 7	7	479	3	44			8.7	18	14	6	5.7				1.1	15.4		566
	7 - 8	8	345	2	29			8.5	8	9	1	4.5				.5	13.5		399
	8 - 9	9	297	1	26		1	8.5	10	4	1	4.4				.6	13.4		343
	9 - 10	10	184	1	15			7.9	4	5	1	4.7		1		1.4	14.0		214
	10 - 11	11	125		5			3.6	4	4		3.6				3.6	10.7		140
	11 - 12	12	97	2	4			6.4	1	3	1	4.5				.9	11.8		110
AM TOTAL			4670	63	496		12	10.9	92	119	41	4.5	1	3	85	1.6	17.0		5625
PM TOTAL			5235	76	571		15	11.2	157	131	32	5.0	2	3	86	1.4	17.7		6359
DAY TOTAL			9905	139	1067		27	11.1	249	250	73	4.8	3	6	171	1.5	17.3		11984
																		2-AXLE EQUIVALENT	13272

SR 014 MP 012.49 OFF SYSTEM ID. LEG 2 DIRECTION OF TRAFFIC WESTBOUND LANE ALL OF
COUNT IDENTIFIER HPMS COUNTER NUMBER 000644 DESCRIPTION: ON SR 14 E/O NW 6TH AVE I/C

09-19-03	CARS PICKUPS	BUS	SINGLE MED	UNITS HVY	4+	SINGLE UNIT %	DOUBLE 4-	DOUBLE 5	DOUBLE 6+	DOUBLE UNIT %	5-	TRAINS 6	TRAINS 7+	TRAIN %	TRUCK %	CLASS UNKNOWN	TOTAL VEHICLES	
FRIDAY AM HOURS	72	1	2	1		4.7			2	4.7			5	5.9	15.3		85	
12 - 1	47	1	3	1		8.5	1	5	1	10.2			1	1.7	20.3		59	
1 - 2	27	2	3	1		13.3		7	1	17.8			4	8.9	40.0		45	
2 - 3	48		6			11.9	1	2	1	6.8					18.6		59	
3 - 4	127	4	15			12.1	1	5	3	5.7			2	1.3	19.1		157	
4 - 5	337	5	51			14.3	3	10	1	3.4			3	1.0	18.6		414	
5 - 6	681	4	88			11.6	8	7	2	2.1		1	9	1.1	14.9		800	
6 - 7	873	3	90			9.7	12	7	2	2.1			4	.4	12.5		995	
7 - 8	688	4	81			11.7	13	15	5	4.0			4	1.6	17.2		831	
8 - 9	574	10	59		1	10.3	20	19	7	6.5		1	13	2.0	18.8		707	
9 - 10																		
10 - 11																		
11 - 12																		
PM HOURS																		
12 - 1																		
1 - 2																		
2 - 3																		
3 - 4																		
4 - 5																		
5 - 6																		
6 - 7																		
7 - 8																		
8 - 9																		
9 - 10																		
10 - 11																		
11 - 12																		
AM TOTAL	3474	39	398	22	1	11.1	59	79	24	3.9		2	54	1.3	16.3		4152	
PM TOTAL	3474	39	398	22	1	11.1	59	79	24	3.9		2	54	1.3	16.3		4152	
DAY TOTAL	3474	39	398	22	1	11.1	59	79	24	3.9		2	54	1.3	16.3		4152	

09-15-03 THRU 09-19-03
AVERAGE WEEKDAY CLASSIFICATION VOLUMES *****
CARS PICKUPS | BUS MED HVY | 4+ | SINGLE UNIT % | DOUBLE 4- | DOUBLE 5 | DOUBLE 6+ | DOUBLE UNIT % | 5- | TRAINS 6 | TRAINS 7+ | TRAIN % | TRUCK % | CLASS UNKNOWN | TOTAL VEHICLES
9890 | 142 1110 91 26 | 11.4 | 239 257 76 | 4.8 | 2 | 8 160 | 1.4 | 17.6 | 12000
TOTAL HOURS FOR COUNT 93
3 DAYS FACTOR GROUP GR-02
AVG WEEKDAY VOL 12000 X SEASONAL ADJ. FACTOR 0.9200 = ESTIMATED AVG DAILY TRAFFIC 11040
AND 2-AXLE EQUIVALENT 13268

HOURLY TRAFFIC CLASSIFICATION SUMMARY

SR 014 MP 012.49 OFF SYSTEM ID. LEG 2 DIRECTION OF TRAFFIC EASTBOUND LANE ALL OF

COUNT IDENTIFIER HPMS COUNTER NUMBER 000726 DESCRIPTION: ON SR 14 E/O NW 6TH AVE I/C

09-15-03 MONDAY CARS PICKUPS | BUS MED HVY | SINGLE UNIT % | DOUBLE UNITS 4- | 5- | TRAINS 6 7+ | TRAIN % | TRUCK % | CLASS UNKNOWN | TOTAL VEHICLES

AM HOURS	CARS PICKUPS	BUS MED HVY	SINGLE UNIT %	DOUBLE UNITS 4-	5-	TRAINS 6 7+	TRAIN %	TRUCK %	CLASS UNKNOWN	TOTAL VEHICLES						
12 - 1	1															
1 - 2	2															
2 - 3	3															
3 - 4	4															
4 - 5	5															
5 - 6	6															
6 - 7	7															
7 - 8	8															
8 - 9	9															
9 - 10	10															
10 - 11	11															
11 - 12	12															
PM HOURS																
12 - 1	1															
1 - 2	2															
2 - 3	3															
3 - 4	4															
4 - 5	5															
5 - 6	6															
6 - 7	7															
7 - 8	8															
8 - 9	9															
9 - 10	10															
10 - 11	11															
11 - 12	12															
AM TOTAL	6227	31	536	48	10	8.6	51	80	22	2.1	58	.8	11.5	200	7263	
PM TOTAL	6227	31	536	48	10	8.6	51	80	22	2.1	58	.8	11.5	200	7263	
DAY TOTAL	6227	31	536	48	10	8.6	51	80	22	2.1	58	.8	11.5	200	7263	
																7657

2-AXLE EQUIVALENT

SR 014 MP 012.49 OFF SYSTEM ID. LEG 2 DIRECTION OF TRAFFIC EASTBOUND LANE ALL OF

COUNT IDENTIFIER HPMS COUNTER NUMBER 000726 DESCRIPTION: ON SR 14 E/O NW 6TH AVE I/C

09-16-03	CARS PICKUPS	BUS	SINGLE MED	HVY	SINGLE UNIT %	DOUBLE UNIT %	DOUBLE UNIT %	5-	TRAINS 6	TRAINS 7+	TRAIN %	TRUCK %	CLASS UNKNOWN	TOTAL VEHICLES
TUESDAY	94	8	1	1	8.3	4.1	2.8			1	.9	12.0	1	108
AM HOURS	50	1	3	2	6.5	3.3	6.5			2	3.2	16.1	2	62
1 - 2	50	1	3	2	9.5	1.6	7.0			3	4.8	15.9	3	63
2 - 3	31	2	4	1	7.0	2.2	5.1		1	2	3.8	17.9	6	43
3 - 4	58	2	4	1	9.0	2.2	5.1		1	2	3.8	17.9	6	78
4 - 5	159	2	23	1	11.8	5	5.9		1	2	3.8	17.9	6	204
5 - 6	364	8	53	6	14.5	10	2.8		1	1	1.0	19.4	9	463
6 - 7	487	7	68	4	12.7	15	4.6			10	2.2	18.6	9	624
7 - 8	399	9	85	4	19.3	17	5.6			9	1.4	18.8	20	624
8 - 9	368	6	51	2	12.6	14	8.8			12	2.0	26.9	32	590
9 - 10	390	10	63	7	15.1	10	5.2			6	1.2	22.6	20	501
10 - 11	460	4	79	17	16.3	5	3.8			14	2.6	23.0	22	535
11 - 12										7	1.1	21.3	32	625
PM HOURS	486	7	77	5	14.3	11	3.9			13	2.2	20.5	19	635
1 - 2	508	6	66	9	12.5	9	4.1		1	12	2.3	18.9	24	656
2 - 3	669	7	76	8	11.1	12	3.3		1	9	1.2	15.6	23	820
3 - 4	867	2	79	8	8.9	12	2.2			14	1.4	12.5	17	1010
4 - 5	931	3	97	4	9.7	9	1.3			10	.9	11.9	13	1072
5 - 6	983	2	82	5	8.3	4	1.0			6	.5	9.8	16	1108
6 - 7	735	2	42	2	5.8	4	1.1			4	.5	7.4	6	800
7 - 8	506	2	38	4	7.8	3	1.0			8	1.4	10.2	13	578
8 - 9	440	1	14	2	7.4	1	.8			3	.6	8.8	3	485
9 - 10	361	1	32	2	4.5	3	1.3			6	1.5	7.3	9	399
10 - 11	230	1	15	1	6.6	2	.8			3	1.2	8.5	6	258
11 - 12	140	1	10	1	6.3	1	1.3			2	1.3	8.9	4	158
AM TOTAL	2910	47	439	56	14.3	80	5.1		2	2	1.8	21.2	160	3896
PM TOTAL	6856	33	628	50	9.0	69	1.9		3	90	1.2	12.2	153	7980
DAY TOTAL	9766	80	1067	106	10.8	149	3.0		5	157	1.4	15.1	313	11876
														12836

2-AXLE EQUIVALENT

SR 014	MP 012.49	OFF SYSTEM ID.	LEG 2	DIRECTION OF TRAFFIC	EASTBOUND	LANE ALL OF											
COUNT IDENTIFIER	HPMS	COUNTER NUMBER	000726	DESCRIPTION: ON SR 14 E/O NW 6TH AVE I/C													
09-17-03																	
WEDNESDAY																	
AM HOURS	CARS	BUS	SINGLE MED	UNITS	4+	SINGLE UNIT %	DOUBLE UNITS	5+	6+	DOUBLE UNIT %	5-	TRAINS	7+	TRAIN %	TRUCK %	CLASS	TOTAL
12 - 1	104	1	9	1	2	10.4	4	5	1	2.6	1	2	2	1.6	12.0	UNKNOWN	125
1 - 2	59	1	5	1	2	10.5	5	1	1	3.8	1	1	1	1.3	14.5	6	125
2 - 3	43	1	4	1	2	7.5	2	2	1	9.3	1	5	1	1.9	13.2	3	76
3 - 4	33	2	2	2	3	11.1	3	3	1	9.0	1	4	4	9.3	29.6	5	53
4 - 5	48		6	2	3	11.9	3	3	1	9.0	1	3	3	6.0	26.9	1	54
5 - 6	158		21	2	5	11.3	5	3	3	5.4	1	3	3	1.5	18.1	9	67
6 - 7	380		57	3	10	13.6	10	8	2	4.1	1	3	3	1.9	19.5	11	204
7 - 8	502		63	3	11	11.7	11	17	3	4.9	1	3	8	1.3	17.8	19	486
8 - 9	401		74	5	18	15.4	18	18	5	4.9	1	7	12	2.1	24.6	34	634
9 - 10	418		76	2	16	14.5	14	13	5	7.1	1	10	10	1.9	24.6	25	577
10 - 11	405		74	4	14	15.8	14	15	4	6.3	1	9	9	2.1	22.7	26	573
11 - 12	484		101	5	18	17.1	18	14	4	5.2	1	16	16	2.3	23.7	39	565
PM HOURS																	
12 - 1	494	10	102	6	10	16.9	10	19	5	4.8		14	14	2.0	23.7	44	705
1 - 2	473	11	96	13	16	18.4	16	15	5	5.3		11	11	1.8	25.5	30	675
2 - 3	642	11	92	4	16	13.4	16	10	4	3.7		6	6	1.7	17.8	31	675
3 - 4	828	8	87	5	12	10.4	12	8	2	2.2		11	11	1.1	13.7	34	819
4 - 5	912	4	110	4	11	11.1	11	10	1	2.0		8	8	0.8	13.9	26	999
5 - 6	1012	2	107	2	11	9.7	11	5	2	1.6		1	1	0.8	11.8	11	1090
6 - 7	769	1	69	1	6	8.2	6	4	3	1.1		4	4	0.6	10.1	20	1160
7 - 8	511	3	38	3	1	7.2	1	3	3	1.2		7	7	0.7	9.1	9	878
8 - 9	470	1	33	3	2	7.1	2	1	1	0.8		4	4	0.4	8.3	8	521
9 - 10	352		23	1	1	6.6	1	3	1	1.0		2	2	0.5	8.1	10	394
10 - 11	218		9	3	1	5.4	1	1	1	0.4		3	3	0.5	7.1	6	241
11 - 12	167		16	1	2	8.8	2	1	1	1.5		1	1	1.2	10.3	7	194
AM TOTAL	3035	48	492	27	15	14.2	97	96	30	5.4	1	3	80	2.0	21.6	184	4108
PM TOTAL	6848	51	782	43	20	10.9	87	80	24	2.3		3	74	0.9	14.1	236	8248
DAY TOTAL	9883	99	1274	70	35	12.0	184	176	54	3.4	1	6	154	1.3	16.6	420	12356
															2-AXLE EQUIVALENT		13381

SR 014 MP 012.49 OFF SYSTEM ID. LEG 2 DIRECTION OF TRAFFIC EASTBOUND LANE ALL OF

COUNT IDENTIFIER HPMS COUNTER NUMBER 0007Z6 DESCRIPTION: ON SR 14 E/O NW 6TH AVE I/C

09-18-03	CARS PICKUPS	BUS	SINGLE MED	UNITS HVY	4+	SINGLE UNIT %	DOUBLE 4-	DOUBLE 5	DOUBLE 6+	DOUBLE UNIT %	5-	TRAINS 6	TRAINS 7+	TRAIN %	TRUCK %	CLASS UNKNOWN	TOTAL VEHICLES
THURSDAY	97		7			6.4											109
AM HOURS	62	2	4			7.9		2	1	3.9			1	.9	7.3	4	76
1 - 1	46	1	2		1	6.9		1	2	6.9			4	5.3	17.1	1	58
2 - 2	33		6			11.3		1	1	7.5			3	5.2	19.0	1	53
3 - 3	46	1	8		1	14.9		2	1	6.0			2	3.8	22.6	8	67
4 - 4	149	3	23		1	13.4		5	2	3.6		1	5	3.0	23.9	5	194
5 - 5	378	7	56		2	13.5		11	2	5.1		1	6	3.1	20.1	6	488
6 - 6	498	6	88		1	13.5		12	2	4.2		1	9	1.8	20.5	10	662
7 - 7	432	8	101		2	15.9		13	6	4.2		1	9	1.4	21.5	22	662
8 - 8	415	10	95		3	18.2		17	5	6.8			8	1.4	26.4	25	621
9 - 9	436	19	85		3	18.5		20	5	7.0			15	2.5	28.0	25	630
10 - 10	501	14	95		2	16.9		12	6	5.4		1	6	1.0	24.6	39	685
11 - 11																	
12 - 12																	
PM HOURS	508	7	76		8	13.4		14	2	4.3			14	2.1	19.8	35	677
1 - 1	537	9	96		12	16.6		12	3	4.0		3	14	2.2	22.9	19	721
2 - 2	662	13	117		12	16.3		10	5	3.2		1	13	1.5	21.0	32	878
3 - 3	878	5	131		7	13.4		9	1	1.8		1	9	.9	16.1	30	1082
4 - 4	914	3	118		5	11.7		11	2	1.7		1	5	.6	14.0	20	1086
5 - 5	1024	1	110		4	9.9		8	1	1.1			2	.2	11.2	13	1168
6 - 6	739	2	82		5	10.5		10	3	2.0		1	4	.7	13.1	16	869
7 - 7	508	3	48		3	9.4		5	5	1.4			4	.7	11.5	10	585
8 - 8	411	3	36		1	8.5		2	2	.6			5	.7	10.3	9	468
9 - 9	392	1	25		2	6.6		1	1	1.4			3	.7	8.7	9	439
10 - 10	221	2	14		3	7.8		1	4	1.2			4	1.6	10.5	9	257
11 - 11	185		12		1	6.3			1				3	1.4	7.7	7	208
12 - 12																	
AM TOTAL	3093	71	570		33	16.1		92	35	5.2		1	2	1.9	23.2	174	4254
PM TOTAL	6979	49	865		63	11.7		80	76	2.1		1	7	1.0	14.8	209	8438
DAY TOTAL	10072	120	1435		96	13.2		172	170	3.1		2	9	1.3	17.6	383	12692
					26				53			9	154		2-AXLE EQUIVALENT		13705

SR 014 MP 012.49 OFF SYSTEM ID. LEG 2 DIRECTION OF TRAFFIC EASTBOUND LANE ALL OF
 COUNT IDENTIFIER HPMS COUNTER NUMBER 000726 DESCRIPTION: ON SR 14 E/O NW 6TH AVE I/C

09-19-03	CARS PICKUPS	BUS	SINGLE MED	HVY	4+	SINGLE UNIT %	DOUBLE 4-	DOUBLE 5	DOUBLE 6+	DOUBLE UNIT %	5-	TRAINS 6	TRAINS 7+	TRAIN %	TRUCK %	CLASS UNKNOWN	TOTAL VEHICLES
FRIDAY	131	1	9	3	2	6.6	1	3	2	3.3			3	2.8	9.9	5	151
AM HOURS	88					5.7		1	1	2.8			2	2.9	11.3	6	106
12 - 1	55	2	2	1	1	7.2	1	1	1	2.9			4	2.9	13.0	5	106
1 - 2	31	1	5	1	1	14.9	2	1	1	6.4			2	8.5	29.8	2	69
2 - 3	71	1	6	1	2	10.9	1	3	1	4.3			4	5.3	16.3	6	92
3 - 4	153	1	14	2	2	9.5	7	3	1	5.3			4	2.1	16.8	5	190
4 - 5	395	2	5	5	1	12.8	11	3	1	3.0			10	2.0	17.8	11	494
5 - 6	461	1	11	5	1	15.1	16	8	4	4.7			10	1.7	21.5	11	601
6 - 7	371	1	13	9	1	21.3	11	14	5	5.5			10	1.8	28.6	18	545
7 - 8	371	4	8	10	3	19.1	15	13	4	5.9			12	2.2	27.2	26	545
8 - 9																	
9 - 10																	
10 - 11																	
11 - 12																	
PM HOURS																	
12 - 1																	
1 - 2																	
2 - 3																	
3 - 4																	
4 - 5																	
5 - 6																	
6 - 7																	
7 - 8																	
8 - 9																	
9 - 10																	
10 - 11																	
11 - 12																	
AM TOTAL	2127	39	347	34	10	15.1	65	48	19	4.6			56	2.0	21.8	95	2840
PM TOTAL	2127	39	347	34	10	15.1	65	48	19	4.6			56	2.0	21.8	95	2840
DAY TOTAL	2127	39	347	34	10	15.1	65	48	19	4.6			56	2.0	21.8	95	2840

09-15-03 THRU 09-19-03

AVERAGE WEEKDAY CLASSIFICATION VOLUMES *****
 CARS PICKUPS | BUS MED HVY | 4+ | SINGLE UNIT % | DOUBLE 4- | DOUBLE 5 | DOUBLE 6+ | DOUBLE UNIT % | 5- | TRAINS 6 | TRAINS 7+ | TRAIN % | TRUCK % | CLASS UNKNOWN | TOTAL VEHICLES
 9907 | 100 | 1259 | 91 | 30 | 12.0 | 168 | 170 | 49 | 3.1 | 2 | 7 | 155 | 1.3 | 16.5 | 372 | 12308
 TOTAL HOURS FOR COUNT 93 FACTOR GROUP GR-02
 3 DAYS 12308 X SEASONAL ADJ. FACTOR 0.9200 = ESTIMATED AVG DAILY TRAFFIC 11323
 AVG WEEKDAY VOL 12308 X SEASONAL ADJ. FACTOR 0.9200 = ESTIMATED AVG DAILY TRAFFIC 11323
 AWD 2-AXLE EQUIVALENT

SR 014 MP 012.49 OFF SYSTEM ID. LEG 2 DIRECTION OF TRAFFIC BOTH WAYS LANE ALL OF

COUNT IDENTIFIER HPMS COUNTER NUMBER 000726 DESCRIPTION: ON SR 14 E/O NW 6TH AVE I/C

09-15-03	CARS PICKUPS	BUS	SINGLE UNITS	4+	SINGLE UNIT %	DOUBLE UNITS	4-	5	6+	DOUBLE UNIT %	5-	6	7+	TRAIN %	TRUCK %	CLASS UNKNOWN	TOTAL VEHICLES
MONDAY																	
AM HOURS																	
12 - 1	1091	32	146	25	14.3	30	42	13	5.9			1	21	1.5	21.8	35	1439
1 - 2	1158	19	135	16	11.6	30	41	9	5.4				22	1.6	18.6	38	1470
2 - 3	1461	13	162	16	11.0	31	17	8	3.2		1		12	.7	14.9	30	1752
3 - 4	1623	12	145	12	9.0	30	19	8	3.0				21	1.1	13.1	18	1889
4 - 5	1682	4	143	7	8.2	19	19	9	2.5				13	.7	11.3	14	1913
5 - 6	1243	5	100	6	8.0	12	17	3	2.3				12	.8	11.1	16	1416
6 - 7	812	1	74	6	8.6	16	12	4	3.0				8	.8	12.4	19	949
7 - 8	666	2	52	3	7.6	6	13	4	3.1				4	.5	11.2	2	752
8 - 9	438	1	22	2	5.1	2	8	3	2.6				4	1.6	11.2	11	495
9 - 10	342	3	20	3	6.6	1	7	1	2.3				4	1.0	9.9	11	392
10 - 11	227		18	4	8.5	2	6	3	4.1				3	1.1	13.7	6	270
11 - 12																	
AM TOTAL	10743	91	1017	100	9.6	179	201	61	3.5		1	2	128	1.0	14.1	200	12737
PM TOTAL	10743	91	1017	100	9.6	179	201	61	3.5		1	2	128	1.0	14.1	200	12737
DAY TOTAL	10743	91	1017	100	9.6	179	201	61	3.5		1	2	128	1.0	14.1	200	12737
																2-AXLE EQUIVALENT	13729

STATE OF WASHINGTON - DEPARTMENT OF TRANSPORTATION
TRIP SYSTEM
HOURLY TRAFFIC CLASSIFICATION SUMMARY

SR 014 MP 012.49 OFF SYSTEM ID. LEG 2 DIRECTION OF TRAFFIC BOTH WAYS LANE ALL OF

COUNT IDENTIFIER HPMS COUNTER NUMBER 000726 DESCRIPTION: ON SR 14 E/O NW 6TH AVE I/C

DAY	AM TOTAL	PM TOTAL	CARS PICKUPS	BUS	SINGLE MED	SINGLE HVY	4+	SINGLE UNIT %	DOUBLE 4-	DOUBLE 5	DOUBLE 6+	DOUBLE UNIT %	5-	TRAINS 6	TRAINS 7+	TRAIN %	TRUCK %	CLASS UNKNOWN	TOTAL VEHICLES	
																				1
09-16-03																				
TUESDAY																				
AM HOURS																				
12 - 1			158	1	10	2	2	7.1	4	5	1	4.4				1.6	13.1	1	183	
1 - 2			93	2	7	2	2	10.8	1	7	1	7.5				2.5	20.8	2	120	
2 - 3			80	3	6	2	2	10.3	2	4	2	4.7				4.7	22.4	3	107	
3 - 4			73	1	4	2	2	7.1	1	8	2	11.2				1.0	19.4	6	98	
4 - 5			195	3	15	1	1	8.3	4	8	2	5.8				2.1	16.3	6	240	
5 - 6			566	3	63	4	1	10.4	11	15	2	4.1				1.6	15.1	7	675	
6 - 7			1133	9	157	9	2	11.5	15	19	2	3.1				1.8	15.5	9	1351	
7 - 8			1399	9	136	6	2	10.5	24	12	2	2.1				1.1	14.7	20	1663	
8 - 9			1129	18	146	21	5	13.2	24	31	8	4.4				1.6	19.2	32	1437	
9 - 10			916	16	135	11	5	14.0	23	41	13	6.4				1.9	21.3	20	1205	
10 - 11			864	22	115	15	2	13.7	23	34	13	6.2				1.6	21.5	22	1128	
11 - 12			945	12	150	28	5	15.4	30	39	9	6.2				1.4	22.9	32	1268	
PM HOURS																				
12 - 1			1000	14	156	15	4	14.6	26	33	9	5.2				1.6	21.4	19	1297	
1 - 2			1057	16	136	16	3	12.7	24	32	11	5.0				1.9	19.6	24	1344	
2 - 3			1218	14	139	12	3	11.2	32	26	11	4.6				1.5	17.3	23	1501	
3 - 4			1529	7	178	16	1	11.0	40	21	11	3.9				1.1	16.0	17	1840	
4 - 5			1594	8	196	13	2	11.6	22	15	5	2.2				1.0	14.8	13	1887	
5 - 6			1617	4	144	9	3	8.7	10	14	5	1.4				0.9	11.0	16	1834	
6 - 7			1217	3	87	5	1	7.0	12	17	1	2.5				1.0	10.5	6	1366	
7 - 8			808	7	57	7	2	7.9	11	11	1	2.5				1.0	10.5	13	926	
8 - 9			690	3	48	3	3	7.1	5	9	2	2.1				1.4	10.6	3	775	
9 - 10			519	2	23	2	2	5.0	4	3	3	1.7				1.9	8.7	9	578	
10 - 11			334	2	23	2	2	7.1	4	3	1	1.6				1.6	10.3	6	379	
11 - 12			230	1	18	1	1	7.1	1	6	2	3.4				1.5	12.0	4	266	
AM TOTAL	7551	99	944	101	28	12.4	160	223	64	4.7	4	3.2				1.5	18.6	160	9475	
PM TOTAL	11813	80	1205	101	22	10.1	189	190	62	3.8	4	3.2				1.3	14.5	153	13993	
DAY TOTAL	19364	179	2149	202	50	11.0	349	413	126	3.8	4	3.8				1.4	16.2	313	23468	

2-AXLE EQUIVALENT 25636

SR 014 MP 012.49 OFF SYSTEM ID. LEG 2 DIRECTION OF TRAFFIC BOTH WAYS LANE ALL OF

COUNT IDENTIFIER HPMS COUNTER NUMBER 000726 DESCRIPTION: ON SR 14 E/O NW 6TH AVE I/C

DAY	TOTAL	CARS PICKUPS	BUS	SINGLE MED HVY	UNITS 4+	SINGLE UNIT %	DOUBLE UNITS			5-	TRAINS 6	7+	TRAIN %	TRUCK %	CLASS UNKNOWN	TOTAL VEHICLES
							4-	5	6+							
09-17-03																
WEDNESDAY																
AM HOURS																
12 - 1		166	1	10	2	7.7	2	4	1		2	1.0	2.2	6	196	
1 - 2		86	2	9	2	12.9		6			3	2.6	20.7	6	116	
2 - 3		65				6.8	1	4			3	4.5	22.7	3	88	
3 - 4		67	2	6	2	13.1	2	6			5	9.1	27.3	5	99	
4 - 5		182	2	8	2	7.8	5	5			8	5.0	16.4	1	219	
5 - 6		563	2	12	1	10.6	12	11			7	3.7	16.0	1	681	
6 - 7		1171	10	66	3	12.2	19	16			15	1.2	16.3	11	1413	
7 - 8		1384	15	150	5	10.5	26	28			22	1.3	15.4	19	1659	
8 - 9		1154	22	143	6	12.4	28	37		1	25	1.7	19.1	34	1468	
9 - 10		976	17	138	12	13.1	34	30			24	2.0	21.2	25	1271	
10 - 11		933	22	128	10	13.7	24	32		1	23	2.1	21.4	26	1220	
11 - 12		958	16	163	13	15.0	36	36			27	2.1	23.5	39	1303	
PM HOURS																
12 - 1		1058	25	183	14	15.6	27	48			26	1.8	23.3	44	1436	
1 - 2		1045	25	170	22	15.9	35	37		1	25	1.8	24.0	30	1415	
2 - 3		1196	28	156	11	13.2	33	24		1	20	1.4	18.8	31	1512	
3 - 4		1505	22	168	13	11.4	33	20			21	1.1	15.8	34	1827	
4 - 5		1540	8	188	9	11.4	33	19		1	19	1.1	15.6	26	1855	
5 - 6		1725	5	177	8	9.7	30	11	1		13	.8	12.8	11	1990	
6 - 7		1248	5	113	3	8.4	24	18		2	13	.9	12.2	20	1444	
7 - 8		856	5	67	2	7.7	9	12			6	.6	10.9	9	971	
8 - 9		767	2	59	5	7.6	12	5			4	.5	10.3	8	864	
9 - 10		536	1	38	2	7.1	5	8		1	4	.8	10.2	10	608	
10 - 11		343	2	14	3	4.7	2	4			4	.3	8.4	6	381	
11 - 12		264	2	20	2	7.9	1	5			1	.3	10.9	7	304	
AM TOTAL		7705	111	988	70	12.3	189	215			165	1.8	18.9	184	9733	
PM TOTAL		12083	127	1353	94	11.0	244	211		2	160	1.2	15.7	236	14607	
DAY TOTAL		19788	238	2341	164	11.5	433	426		4	325	1.4	17.0	420	24340	
													2-AXLE EQUIVALENT		26653	

SR 014 MP 012.49 OFF SYSTEM ID. LEG 2 DIRECTION OF TRAFFIC BOTH WAYS LANE ALL OF
 COUNT IDENTIFIER HPMS COUNTER NUMBER 000726 DESCRIPTION: ON SR 14 E/O NW 6TH AVE I/C

09-18-03 THURSDAY AM HOURS	CARS PICKUPS	BUS	SINGLE MED	UNITS HVV	4+	SINGLE UNIT %	DOUBLE UNITS	6+	DOUBLE UNIT %	5-	TRAINS 6	7+	TRAIN %	TRUCK %	CLASS UNKNOWN	TOTAL VEHICLES
12 - 1	164	1	9	8		5.5	4	2	1.6			1	.5	20.6	4	182
1 - 2	84	3	8	4		10.3	1	4	5.6			5	4.7	7.7	1	107
2 - 3	70	4	4	1	1	9.1	8	8	13.1			6	6.1	28.3	1	99
3 - 4	79	5	10	1	2	9.8	2	2	10.7			2	1.8	22.3	8	112
4 - 5	163	5	16	2	2	11.0	4	3	6.2		2	5	2.4	19.6	5	209
5 - 6	538	4	79	2	2	12.8	11	12	3.8		2	10	1.8	18.3	6	666
6 - 7	1126	14	163	4	5	13.4	21	22	3.4		1	19	.9	15.4	10	1388
7 - 8	1426	7	174	12	4	11.5	23	18	3.0		1	15	1.6	20.5	22	1772
8 - 9	1140	16	174	7	4	13.4	34	36	5.5		2	21	1.6	20.5	25	1465
9 - 10	973	20	163	11	5	15.1	42	41	7.2		1	25	1.9	24.2	25	1317
10 - 11	1002	33	162	19	6	16.2	35	38	6.0		1	18	1.4	25.6	39	1362
11 - 12	1023	30	159	10	3	15.0	20	32	4.8	1		27	2.1	21.9	28	1346
PM HOURS																
12 - 1	1000	29	141	16	2	14.2	29	32	5.0		1	30	2.3	21.6	35	1320
1 - 2	1101	37	161	23	3	15.3	37	37	5.9		4	30	2.3	23.5	19	1464
2 - 3	1301	36	209	24	3	16.0	37	29	4.3		1	24	1.5	17.8	32	1704
3 - 4	1617	19	230	14	6	13.4	34	27	3.4		2	17	.9	15.1	20	2003
4 - 5	1637	19	198	7	3	11.6	34	15	2.8		2	11	.7	13.3	13	1952
5 - 6	1718	9	192	9	4	10.7	26	14	2.2			8	.4	12.2	10	1483
6 - 7	1276	7	127	6	3	9.6	22	12	2.6	1	2	7	.8	12.2	16	1025
7 - 8	890	5	75	5	1	8.4	13	16	3.0			8	1.0	10.6	9	815
8 - 9	703	4	69	1	1	9.1	7	13	2.6			4	.6	10.6	9	678
9 - 10	597	3	44	3	1	7.5	3	11	2.5			7	1.8	13.0	9	393
10 - 11	333	4	25	3	2	8.7	3	7	2.5			4	1.8	13.0	9	393
11 - 12	277		23	1		7.5		1	.9			8	2.5	11.0	7	319
AM TOTAL	7788	137	1121	66	26	13.5	193	227	4.9	1	6	154	1.6	20.1	174	9665
PM TOTAL	12450	172	1494	112	28	11.9	247	214	3.4	1	12	162	1.2	16.5	209	15152
DAY TOTAL	20238	309	2615	178	54	12.6	440	441	4.0	2	18	316	1.3	17.9	383	25117

2-AXLE EQUIVALENT 27437

SR 014 MP 012.49 OFF SYSTEM ID. LEG 2 DIRECTION OF TRAFFIC BOTH WAYS LANE ALL OF
 COUNT IDENTIFIER HPMS COUNTER NUMBER 000726 DESCRIPTION: ON SR 14 E/O NW 6TH AVE I/C

09-19-03	CARS PICKUPS	BUS	SINGLE MED	UNITS HVY	4+	SINGLE UNIT %	DOUBLE	UNITS	6+	DOUBLE UNIT %	5-	TRAINS	7+	TRAIN %	TRUCK	CLASS	TOTAL
FRIDAY	203	1	11	1	1	5.9	4-	5	4	3.8		6	5	2.1	11.9	UNKNOWN	5
AM HOURS	135	2	6	1	2	6.7		6	1	5.5		4	4	2.4	14.5		6
1 - 1	82	4	5	2	2	9.6		7	2	8.8		6	4	3.3	23.7		5
2 - 2	79		11	1	1	13.2		2	2	6.6		4	4	3.8	23.6		5
3 - 3	198	5	21	1	2	11.6		8	3	5.2		3	3	1.2	18.1		6
4 - 4	490	7	65	5	5	12.7		10	13	4.0		1	7	1.3	18.0		5
5 - 5	1076	9	141	6	6	12.1		10	13	2.5		19	11	1.5	16.0		11
6 - 6	1334	14	165	9	9	11.8		15	15	3.1		14	11	.9	15.7		11
7 - 7	1059	22	174	16	16	15.5		24	29	4.6		23	18	1.7	21.7		18
8 - 8	945	14	146	13	13	14.1		35	32	6.2		1	25	2.1	22.4		26
9 - 9																	
10 - 10																	
11 - 11																	
12 - 12																	
PM HOURS																	
1 - 1																	
2 - 2																	
3 - 3																	
4 - 4																	
5 - 5																	
6 - 6																	
7 - 7																	
8 - 8																	
9 - 9																	
10 - 10																	
11 - 11																	
12 - 12																	
AM TOTAL	5601	78	745	56	11	12.7		124	127	4.2		2	110	1.6	18.5		95
PM TOTAL																	
DAY TOTAL	5601	78	745	56	11	12.7		124	127	4.2		2	110	1.6	18.5		95

09-15-03 THRU 09-19-03
 AVERAGE WEEKDAY CLASSIFICATION VOLUMES *****
 CARS PICKUPS | BUS MED HVY | SINGLE UNIT % | DOUBLE UNITS | TRAINS 7+ | TRAIN % | TRUCK % | CLASS UNKNOWN | TOTAL VEHICLES
 19797 | 242 2368 181 55 | 11.7 | 407 427 125 | 3 | 15 315 | 1.4 | 17.0 | 372 | 24308
 TOTAL HOURS FOR COUNT 93
 3 DAYS 24308 X SEASONAL ADJ. FACTOR 0.9200 = ESTIMATED AVG DAILY TRAFFIC 22363
 AVG WEEKDAY VOLUME 19797
 PEAK HOUR PERCENTAGES: K = 8.24 D = 54.02 T = 17.77
 PEAK HOUR LOCATION : VOLUME = 2003 DATE: 09/18/03 TIME: 03:00 PM

Note: Class Unknown High EB