

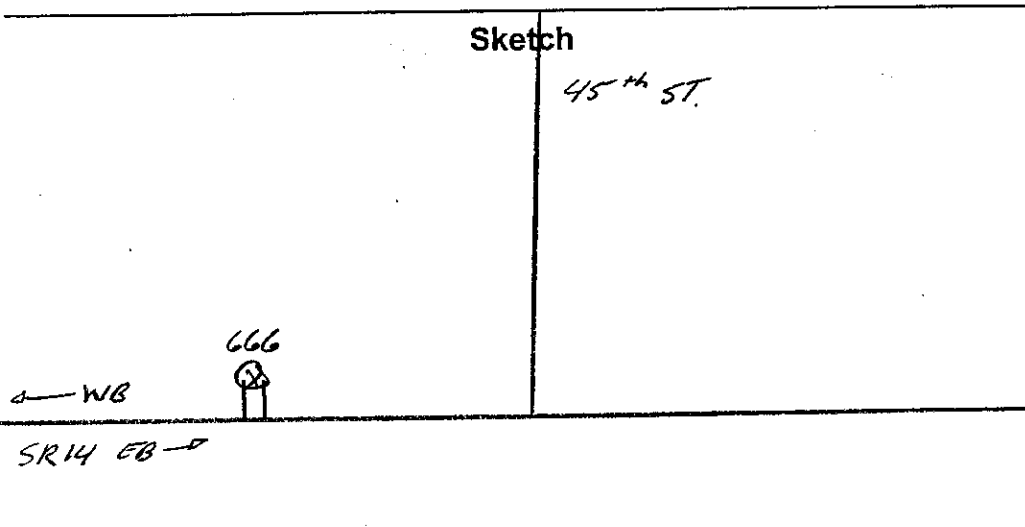
GK Traffic Counter

Interval 60 Min. 15 Min.
 2 Tube Classification
 Lane No. 1 2
 1 Channel Tube A+B
 2 Channel Tube A, B
 Direction Channel A _____
 Direction Channel B _____
 Module No. 21459

Counter No. 666 Count ID HPMS
 SR 14 RRT _____ MP 17.84
 Leg 1 Direction WB OSID _____

Station Description - ON SR14 W/O 45th ST.

Date	Day	Time	Comments
6/28/04	2	1122	Manual A <u>4</u> B _____ Counter A <u>4</u> B _____ Set o.k. JM 6.4
6/29	3	0929	Manual A <u>17</u> B _____ Counter A <u>17</u> B _____ check o.k. JM 6.4
6/30	4	0810	Manual A <u>13</u> B _____ Counter A <u>13</u> B _____ check o.k. JM 6.5
7/1	5	0811	Manual A <u>17</u> B _____ Counter A <u>17</u> B _____ check o.k. JM 6.5
7/2	6	0759	Manual A <u>1</u> B _____ Counter A <u>1</u> B _____ PIU JM 6.5



J. Mills
Field Person

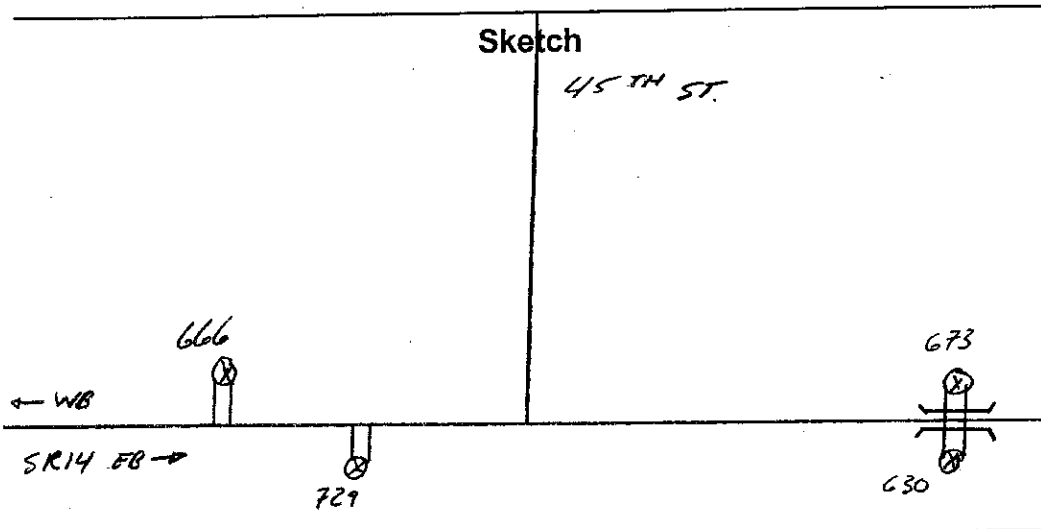
GK Traffic Counter

Interval 60 Min. 15 Min.
 2 Tube Classification
 Lane No. 1 2
 1 Channel Tube A+B
 2 Channel Tube A, B
 Direction Channel A _____
 Direction Channel B _____
 Module No. 20204

Counter No. 729 Count ID HPMS
 SR 14 RRT _____ MP 17.84
 Leg 1 Direction EB OSID _____

Station Description - ON SR14 W/O 45th ST.

Date	Day	Time	Comments
6/28/04	2	1105	Manual A <u>2</u> B _____ Counter A <u>2</u> B _____ <i>set o.k. JIM 6.6</i>
6/29	3	0922	Manual A <u>13</u> B _____ Counter A <u>13</u> B _____ <i>check o.k. JIM 6.5</i>
6/30	4	0804	Manual A <u>12</u> B _____ Counter A <u>12</u> B _____ <i>check o.k. JIM 6.6</i>
7/1	5	0805	Manual A <u>8</u> B _____ Counter A <u>8</u> B _____ <i>check o.k. JIM 6.6</i>
7/2	6	0804	Manual A <u>1</u> B _____ Counter A <u>1</u> B _____ <i>PIU JIM 6.6</i>



J. Mills

Field Person

DOT-RNB505A-B

STATE OF WASHINGTON - DEPARTMENT OF TRANSPORTATION
TRIP SYSTEM
HOURLY TRAFFIC CLASSIFICATION SUMMARY

DATE 10/25/04
TIME 11:52:05
PAGE 1

SR 014 MP 017.84 OFF SYSTEM ID. LEG 1 DIRECTION OF TRAFFIC WESTBOUND LANE ALL OF

COUNT IDENTIFIER HPMS COUNTER NUMBER 000666 DESCRIPTION: ON SR 14 W/O 45TH ST

06-28-04	CARS	BUS	SINGLE MED	UNITS HVY	4+	SINGLE UNIT %	DOUBLE 4-	DOUBLE 5	DOUBLE 6+	DOUBLE UNIT %	5-	TRAINS 6	TRAINS 7+	TRAIN %	TRUCK %	CLASS UNKNOWN	TOTAL VEHICLES
MONDAY																	
AM HOURS	PICKUPS																
12 - 1	167					7.0	3	7	2	6.0		2	5	3.5	16.5		200
1 - 2	174					6.4	1	7	2	4.9		6	6	3.0	14.3		203
2 - 3	193					8.8	2	4	3	3.9		1	1	2.6	15.4		228
3 - 4	204	3				2.2	8	6	3	6.3		1	1	.4	8.9		224
4 - 5	243					7.9	2	8	2	4.3		3	3	1.1	13.2		280
5 - 6	220				1	5.1	2	1	1	1.7		1	1	.4	7.2		237
6 - 7	151					6.5	1	1	1	3.6					10.1		168
7 - 8	102	1				3.4	2	5	1	6.8		1	2	2.6	12.8		117
8 - 9	82					4.4	1	1	2	3.3					9.9		91
9 - 10	83					5.3	2	4		6.4					11.7		94
10 - 11	53					6.5	3	2	3	8.1					14.5		62
11 - 12	32					7.0	2	2	3	11.6					25.6		43
AM TOTAL	1704	4	106	5	2	6.0	26	48	20	4.8		3	29	1.6	12.5		1947
PM TOTAL	1704	4	106	5	2	6.0	26	48	20	4.8		3	29	1.6	12.5		1947
DAY TOTAL	1704	4	106	5	2	6.0	26	48	20	4.8		3	29	1.6	12.5		1947
																	2168

2-AXLE EQUIVALENT

SR 014 MP 017.84 OFF SYSTEM ID. LEG 1 DIRECTION OF TRAFFIC WESTBOUND LANE ALL OF
 COUNT IDENTIFIER HPMS COUNTER NUMBER 000666 DESCRIPTION: ON SR 14 W/O 45TH ST

06-29-04 TUESDAY AM HOURS	CARS PICKUPS	BUS	SINGLE MED	SINGLE HVV	4+	SINGLE UNIT %	DOUBLE 4-	DOUBLE 5	DOUBLE 6+	DOUBLE UNIT %	5-	TRAINS 6	TRAINS 7+	TRAIN %	TRUCK %	CLASS UNKNOWN	TOTAL VEHICLES
12 - 1	15		2			10.5				10.5					21.1		19
1 - 2	4		2			28.6				14.3					42.9		7
2 - 3	7		1			9.1				18.2					36.4		11
3 - 4	11		1			8.3									8.3		12
4 - 5	39		1		2	7.1									7.1		42
5 - 6	148		7		2	5.0				1.9					6.9		159
6 - 7	222		22		1	9.1			1	2.4					12.3		253
7 - 8	202		13		2	6.6			1	3.5					10.6		226
8 - 9	170		12		1	6.6			1	4.1					13.3		196
9 - 10	149		11		1	6.5			1	1.8					11.8		169
10 - 11	145		11		2	6.4			1	6.4					16.2		173
11 - 12	147		9		1	5.7			4	5.7					16.5		176
PM HOURS																	
12 - 1	150		2		1	9.1			1	4.0					14.8		176
1 - 2	173		2		1	6.5			1	4.0					13.1		199
2 - 3	189		1		1	7.8			3	3.7					13.3		218
3 - 4	196		1		1	7.1			3	3.6					12.9		225
4 - 5	204		1		1	4.7			5	4.7					12.1		232
5 - 6	223		9		1	4.9			4	2.5					8.6		244
6 - 7	138		1		1	7.6			2	3.2					12.1		157
7 - 8	125		5		1	4.3			1	3.6					10.1		139
8 - 9	95		1		1	1.0			2	3.0					5.9		101
9 - 10	94		8		1	7.6			3	2.9					10.5		105
10 - 11	59		5		1	7.4			1	4.4					13.2		68
11 - 12	39		1		1	2.3			3	6.8					11.4		44
AM TOTAL	1259		89		10	6.9			9	3.7					12.8		1443
PM TOTAL	1685		105		5	6.2			20	3.7					11.7		1908
DAY TOTAL	2944		194		15	6.5			29	3.7					12.1		3351
					2				63					1.9	2-AXLE EQUIVALENT		3709

SR 014 MP 017.84 OFF SYSTEM ID. COUNTER NUMBER 000666 LEG 1 DESCRIPTION: ON SR 14 W/O 45TH ST LANE ALL OF

06-30-04	WEDNESDAY	CARS PICKUPS	BUS	SINGLE MED	SINGLE HVY	4+	SINGLE UNIT	DOUBLE 4-	DOUBLE 5	DOUBLE 6+	DOUBLE UNIT	5-	TRAINS 6	TRAINS 7+	TRAIN %	TRUCK %	CLASS UNKNOWN	TOTAL VEHICLES	
12	1	18		1			4.8		2	1	9.5			1	7.1	10.0		21	
11	2	8					5.0				5.0				7.1	21.4		14	
2	3	11					7.1		1		7.1			1	7.1	21.4		14	
3	4	45					3.5				1.8			5	2.9	8.2		45	
4	5	156		6		1	10.6		2	1	3.0			1	.4	14.0		170	
5	6	203		21			6.2		4	2	2.1			1	.5	8.8		236	
6	7	177		12			5.2		4	4	2.9			2	1.0	10.5		194	
7	8	171		8			5.9		3	1	4.2			2	3.4	12.3		191	
8	9	179		10			8.2		4	3	3.3			7	3.4	13.1		204	
9	10	159		13			5.1		5	1	6.8			3	1.6	13.1		183	
10	11	151		8			7.3		6	1	6.8			4	2.3	14.2		176	
11	12	160		9			5.7		5	3	4.7			4	2.1	16.2		191	
12	1	186		12			9.2		3	3	4.9			3	1.4	11.8		211	
1	2	176		9			5.7		5	3	4.7			3	1.4	11.8		211	
2	3	206		11			5.7		3	4	4.9			1	.5	14.6		206	
3	4	207		12			8.1		3	3	3.4			2	1.3	10.4		230	
4	5	218		15			7.0		3	1	2.5		1	.8	12.3	10.3		243	
5	6	169		16			4.4		1	2	2.2			2	1.1	7.7		183	
6	7	138		8			3.4		2	2	4.0			2	1.5	13.1		149	
7	8	113		5			6.9		4	1	4.6			2	1.5	13.1		130	
8	9	73		3			3.8		2	2	2.6			2	2.9	6.4		78	
9	10	61		5			7.1		2	1	2.9			2	2.9	12.9		70	
10	11	37		1			2.3		1	1	4.5			4	9.1	15.9		44	
11	12																		
AM TOTAL		1296		80			6.3		10		3.4			24	1.6	11.4		1462	
PM TOTAL		1744		106			6.3		22		3.9			24	1.3	11.5		1971	
DAY TOTAL		3040		186			6.3		32		3.7			48	1.4	11.4		3433	

2-AXLE EQUIVALENT

SR 014 MP 017.84 OFF SYSTEM ID. LEG 1 DIRECTION OF TRAFFIC WESTBOUND LANE ALL OF
COUNT IDENTIFIER HPMS COUNTER NUMBER 000666 DESCRIPTION: ON SR 14 W/O 45TH ST

07-01-04 THURSDAY AM HOURS	CARS PICKUPS	BUS	SINGLE MED	HVY	4+	SINGLE UNIT %	DOUBLE 4-	5	6+	DOUBLE UNIT %	5- TRAINS	6	7+	TRAIN %	TRUCK %	CLASS UNKNOWN	TOTAL VEHICLES
12 - 1	15						1	1	2	18.2			3	13.6	31.8		22
1 - 2	10							3		23.1					44.4		9
2 - 3	5							3		33.3					15.4		13
3 - 4	11		1			11.1								2.4	9.2		41
4 - 5	40					15.4								2.4	2.4		163
5 - 6	148		5			3.7	1	6	1	4.9			1	0.6	9.2		243
6 - 7	205		24			11.5	1	1	4	2.5			4	1.6	15.6		230
7 - 8	208		13			6.1	2	3	1	2.2			3	1.3	9.6		194
8 - 9	177	1	11			5.7		3	1	2.1			2	1.0	8.8		202
9 - 10	174		11			7.4		4	1	2.0			9	4.5	13.9		185
10 - 11	151		16			12.4		5	1	4.9			2	1.1	18.4		202
11 - 12	162		18			10.4	3	9	5	7.4			4	2.0	19.8		202
PM HOURS																	
12 - 1	173		13			8.5	1	4	1	3.0			5	2.5	13.9		201
1 - 2	183		12			7.6	1	4	3	3.8			4	1.9	13.3		211
2 - 3	174	1	12			7.5	2	5	1	4.0			4	2.0	13.4		201
3 - 4	259		20			8.2	2	3	1	2.0			4	1.4	11.6		293
4 - 5	256		17			6.9	2	3	3	2.0					12.0		291
5 - 6	209		7			3.9	2	6	1	3.5	2			.9	8.3		228
6 - 7	153	1	9			6.5		6		3.5			1		10.0		170
7 - 8	150		12		1	7.6		7		4.1			3	.6	12.3		171
8 - 9	124		3			3.0		3	1	3.0			2	2.2	8.1		135
9 - 10	96	1	8			7.5		3		.9			2	1.9	10.3		107
10 - 11	74		4			4.9		2		2.5			1	1.2	8.6		81
11 - 12	46	1	2			6.0		1		2.0					8.0		50
AM TOTAL	1306	4	99			8.0	9	38	14	4.0			29	1.9	13.9		1517
PM TOTAL	1897	7	119			6.7	11	51	10	3.4			24	1.2	11.3		2139
DAY TOTAL	3203	11	218			7.2	20	89	24	3.6			53	1.5	12.4	2-AXLE EQUIVALENT	3656

DOT-RNB505A-B

STATE OF WASHINGTON - DEPARTMENT OF TRANSPORTATION
TRIP SYSTEM
HOURLY TRAFFIC CLASSIFICATION SUMMARY

DATE 10/25/04
TIME 11:52:05
PAGE 6

SR 014 MP 017.84 OFF SYSTEM ID. LEG 1 DIRECTION OF TRAFFIC EASTBOUND LANE ALL OF
COUNT IDENTIFIER HPMS COUNTER NUMBER 000729 DESCRIPTION: ON SR 14 W/O 45TH ST

06-28-04 MONDAY AM HOURS	CARS PICKUPS	BUS	SINGLE MED	UNITS Hvy	4+	SINGLE UNIT %	DOUBLE 4-	UNITS 5	6+	DOUBLE UNIT %	5-	TRAINS 6	7+	TRAIN %	TRUCK %	CLASS UNKNOWN	TOTAL VEHICLES
12 - 1	151		11	3		7.6	3	7	2	4.9			3	1.6	14.1	7	184
1 - 2	143	2	9	2	1	6.5	3	6	2	4.9			3	3.3	14.7	14	184
2 - 3	169	1	7	1		5.5	4	4	1	4.0			3	1.5	11.0	9	200
3 - 4	173		12	3		7.2	7	7	3	4.8			2	1.0	12.9	9	209
4 - 5	230	1	16	2		6.9	2	5	1	4.8			2	1.0	12.9	9	209
5 - 6	217		16	2		7.3	2	4	1	2.8			1	.4	10.5	4	247
6 - 7	180		12			5.8	2	7	1	4.3			3	1.4	11.6	3	207
7 - 8	133		9			5.7	1	6	3	7.0			2	1.3	14.0	2	157
8 - 9	117		6			4.6	2	3	1	2.3			2	1.5	8.5	2	130
9 - 10	125		7			5.0	1	3	1	3.6			3	2.1	10.7	2	140
10 - 11	72		1			1.3	1	1	2	1.3			3	3.9	6.5	2	77
11 - 12	37		2			4.3		2	2	8.5			2	4.3	17.0	2	47
AM TOTAL	1747	4	108	12	1	6.1	14	55	14	4.1			30	1.5	11.7	56	2041
PM TOTAL	1747	4	108	12	1	6.1	14	55	14	4.1			30	1.5	11.7	56	2041
DAY TOTAL	1747	4	108	12	1	6.1	14	55	14	4.1			30	1.5	11.7	56	2041
																	2248

2-AXLE EQUIVALENT

SR 014 MP 017.84 OFF SYSTEM ID. LEG 1 DIRECTION OF TRAFFIC EASTBOUND LANE ALL OF
COUNT IDENTIFIER HPMS COUNTER NUMBER 000729 DESCRIPTION: ON SR 14 W/O 45TH ST

06-29-04	CARS PICKUPS	BUS MED	SINGLE UNIT	DOUBLE UNIT	TRAINS	TRUCK	CLASS UNKNOWN	TOTAL VEHICLES
TUESDAY	32	2	1	1	2	2	2	38
AM HOURS	18	1	4.5	5.3	8.3	15.8	18.2	22
12 - 1	11					8.3	11.8	17
1 - 2	11					8.3	11.8	17
2 - 3	14					4.0	16.0	25
3 - 4	20					6.3	27.0	25
4 - 5	43	1	8.0	4.0	2	1.3	15.8	63
5 - 6	64	2	12.7	7.9	2	1.0	18.1	76
6 - 7	85	2	11.4	6.6	1	1.0	19.7	105
7 - 8	98	2	9.2	5.7	1	4.9	18.3	122
8 - 9	110	2	9.0	7.0	2	2.1	19.7	142
9 - 10	131	1	9.8	5.5	3	1.2	16.6	163
10 - 11	129	1	6.3	6.3	2	2.3	15.1	159
11 - 12								
PM HOURS	140	10	6.9	2	10	8.0	15.5	174
12 - 1	143	11	6.7	3	7	6.7	16.7	180
1 - 2	172	7	4.0	1	6	3.3	16.7	180
2 - 3	171	10	6.6	2	5	1.0	8.5	200
3 - 4	221	14	5.5	1	5	3.5	11.1	198
4 - 5	218	18	7.7	2	5	3.6	9.9	253
5 - 6	197	10	5.6	1	4	2.4	10.5	248
6 - 7	157	12	7.3	2	1	1.4	7.9	216
7 - 8	123	4	2.2	3	5	5.0	12.3	179
8 - 9	93	3	4.0	2	3	5.1	8.8	136
9 - 10	89	1	1.1	2	2	2.0	6.0	100
10 - 11	64	2	2.9	2	1	1.1	2.2	91
11 - 12								69
AM TOTAL	755	6	59	16	37	6.1	2.9	944
PM TOTAL	1788	2	102	7	50	3.9	.9	2044
DAY TOTAL	2543	8	161	23	87	4.6	1.5	2988
								68
								2988
								3515

2-AXLE EQUIVALENT

STATE OF WASHINGTON - DEPARTMENT OF TRANSPORTATION
TRIP SYSTEM
HOURLY TRAFFIC CLASSIFICATION SUMMARY

SR 014 MP 017.84 OFF SYSTEM ID. LEG 1 DIRECTION OF TRAFFIC EASTBOUND LANE ALL OF

COUNT IDENTIFIER HPMS COUNTER NUMBER 000729 DESCRIPTION: ON SR 14 W/O 45TH ST

DAY	CARS PICKUPS	BUS MED	SINGLE UNITS HVY	4+ UNIT %	DOUBLE UNITS 4-5	6+ UNIT %	5- TRAINS 6	7+ TRAINS 7+	TRAIN %	TRUCK %	CLASS UNKNOWN	TOTAL VEHICLES
06-30-04 WEDNESDAY AM HOURS	41	1	2	17.6	1	7.7	1	7.7	2.4	2.4	1	42
12 - 1	21	1	2	24.1	1	8.0	1	7.7	24.1	24.1	1	29
1 - 2	10	1	2	16.0	1	5.4	1	1.4	17.6	17.6	1	13
2 - 3	13	1	2	5.7	1	8.7	1	1.0	24.0	24.0	1	17
3 - 4	19	1	3	6.8	2	5.4	1	1.4	9.4	9.4	2	25
4 - 5	46	2	3	9.7	2	8.7	1	1.0	13.5	13.5	4	53
5 - 6	60	2	3	12.2	1	14.8	1	2.6	19.4	19.4	4	74
6 - 7	83	1	3	10.9	1	9.5	1	2.6	29.6	29.6	4	103
7 - 8	77	1	1	9.2	2	6.6	3	1.4	21.8	21.8	9	115
8 - 9	106	2	1	6.6	2	6.1	3	1.8	15.0	15.0	8	147
9 - 10	134	1	1	5.9	6	4.9	5	3.1	18.4	18.4	3	167
10 - 11	130	1	2	2.7	8	6.5	3	1.5	12.3	12.3	4	203
11 - 12	174	1	9	8.6	1	2.3	6	3.3	12.5	12.5	4	184
12 - 1	158	1	4	5.5	2	4.3	2	1.1	12.0	12.0	3	175
1 - 2	150	1	11	6.2	4	2.8	1	.4	10.3	10.3	4	253
2 - 3	214	1	14	3.3	4	2.3	2	.8	9.3	9.3	4	258
3 - 4	230	1	9	3.6	3	2.3	1	.8	7.2	7.2	1	249
4 - 5	230	1	12	6.3	1	3.2	3	1.4	7.0	7.0	3	215
5 - 6	197	1	3	4.6	1	1.5	1	1.1	10.5	10.5	1	190
6 - 7	170	1	7	5.5	1	3.9	3	3.1	9.2	9.2	1	130
7 - 8	117	1	3	3.4	2	3.4	2	1.6	11.0	11.0	1	127
8 - 9	113	1	4	3.6	3	3.4	1	.8	10.7	10.7	1	118
9 - 10	108	1	2	5.1	1	4.7	1	1.8	12.5	12.5	67	3106
10 - 11	50	1	6	9.4	37	7.4	16	1.7	18.5	18.5	33	948
11 - 12	740	8	10	5.1	39	3.5	26	1.3	9.9	9.9	34	2158
AM TOTAL	1911	3	168	6.4	20	4.7	3	1.4	12.5	12.5	67	3106
PM TOTAL	2651	11	16	38	76	31	42	1.4	2-AXLE EQUIVALENT	67	3442	

STATE OF WASHINGTON - DEPARTMENT OF TRANSPORTATION
 TRIP SYSTEM
 HOURLY TRAFFIC CLASSIFICATION SUMMARY

SR 014	MP 017.84	OFF SYSTEM ID.	LEG 1	DIRECTION OF TRAFFIC	EASTBOUND	LANE ALL OF									
COUNT IDENTIFIER	HPMS	COUNTER NUMBER	000729	DESCRIPTION: ON SR 14 W/O 45TH ST											
07-01-04															
THURSDAY															
AM HOURS	CARS PICKUPS	BUS	SINGLE MED	SINGLE UNITS HVY	4+	SINGLE UNIT %	DOUBLE UNITS 4-5	6+	DOUBLE UNIT %	5- TRAINS 6	7+	TRAIN %	TRUCK %	CLASS UNKNOWN	TOTAL VEHICLES
12 - 1	32		3			15.0	1	1	2.7		3	8.1	10.8	1	37
1 - 2	16		3			10.0		1	5.0		2	20.0	20.0		20
2 - 3	4		1			25.0		1	30.0		2	16.7	60.0		10
3 - 4	7		3			11.8		1	16.7		2	20.0	41.7		12
4 - 5	11		1	1		11.8		1	16.7		2	11.8	23.5		17
5 - 6	33		4	2		12.5		1	8.3	1	2	4.2	25.0		48
6 - 7	82	2	4	2		6.5		1	2.2		1	1.1	9.7		93
7 - 8	92	1	11	4		11.8		1	7.6	1	1	1.7	21.0		119
8 - 9	108	1	11	4	2	12.6		1	7.7		1	2.1	22.4		143
9 - 10	108	1	11	4	2	9.8		1	6.8		1	2.3	18.8		133
10 - 11	144	1	12	2	2	8.0		2	4.0		4	2.3	14.4		174
11 - 12	141	1	8	3	1	6.9		2	4.6		4	2.3	13.8		174
PM HOURS															
12 - 1	167		9	1	1	5.4		3	5.4		3	1.5	12.3		203
1 - 2	178		9	3	2	5.6		6	4.6	2	3	2.3	12.5		216
2 - 3	188		9	2	5	5.6		8	4.7		2	1.5	10.3		213
3 - 4	185	2	10	3	4	7.2		4	3.6	1	4	2.2	13.0		223
4 - 5	269		21	2	2	7.6		3	2.0	1	2	1.0	10.6		303
5 - 6	232	1	13	1	4	5.7		3	2.6		5	2.3	10.6		265
6 - 7	213		10	2	2	4.3		3	3.8		2	3.1	8.1		235
7 - 8	177		12	1	1	6.2		5	3.1		2	1.4	9.2		195
8 - 9	123		9	2	2	6.5		4	2.2		2	1.3	10.1		138
9 - 10	135		4	4	4	2.6		2	5.3		2	0.8	9.2		152
10 - 11	110	1	5	2	2	5.0		4	1.7		1	1.4	7.6		119
11 - 12	63		3	1	2	5.6		1	4.2		1	1.4	11.3		71
AM TOTAL	778	5	70	15	2	9.4	16	31	5.8	1	2	2.7	17.9	27	980
PM TOTAL	2040	4	114	12	4	5.7	23	44	3.6	5	23	1.2	10.5	48	2333
DAY TOTAL	2818	9	184	27	6	6.8	39	75	4.2	1	46	1.6	12.7	75	3313
													2-AXLE EQUIVALENT		3667

STATE OF WASHINGTON - DEPARTMENT OF TRANSPORTATION
TRIP SYSTEM
HOURLY TRAFFIC CLASSIFICATION SUMMARY

SR 014 MP 017.84 OFF SYSTEM ID. LEG 1 DIRECTION OF TRAFFIC EASTBOUND LANE ALL OF
COUNT IDENTIFIER HPMS COUNTER NUMBER 000729 DESCRIPTION: ON SR 14 W/O 45TH ST

07-02-04	CARS PICKUPS	BUS	SINGLE MED	UNITS HVY	4+	SINGLE UNIT %	DOUBLE UNITS 4-	5	6+	DOUBLE UNIT %	5- TRAINS 6	7+	TRAIN %	TRUCK %	CLASS UNKNOWN	TOTAL VEHICLES
FRIDAY	42		1			2.2		1	1	4.3		1	2.2	8.7		46
AM HOURS	24		1			3.6		1	1	4.3		1	3.6	10.7		28
12 - 1	19		1			4.8		1	1	4.8		1	4.8	9.5		21
2 - 3	22						1		1	8.0		1	4.0	12.0		25
3 - 4	12		1			6.3		2	1	12.5		2	4.3	18.8		16
4 - 5	33		5			15.2		3	3	8.7		2	3.6	22.6		46
5 - 6	62		3			8.3		3	3	10.7		3	3.6	22.6		84
6 - 7	91	2	7			9.6	3	2		4.3		2	1.7	15.7		115
7 - 8																
8 - 9																
9 - 10																
10 - 11																
11 - 12																
AM TOTAL	305	4	19	6		7.6	10	8	7	6.6		11	2.9	17.1		381
PM TOTAL	305	4	19	6		7.6	10	8	7	6.6		11	2.9	17.1		381
DAY TOTAL	305	4	19	6		7.6	10	8	7	6.6		11	2.9	17.1		381

06-28-04 THRU 07-02-04
AVERAGE WEEKDAY CLASSIFICATION VOLUMES *****
CARS PICKUPS | BUS MED HVY | SINGLE UNIT % | DOUBLE UNITS 4- | 5 | 6+ | TRAINS 7+ | TRAIN % | TRUCK % | CLASS UNKNOWN | TOTAL VEHICLES
2671 | 9 | 171 | 22 | 4 | 6.6 | 36 | 79 | 26 | 4.5 | 5 | 43 | 1.5 | 12.6 | 70 | 3136
AVG WEEKDAY VOLUME

TOTAL HOURS FOR COUNT 92
3 DAYS
AVG WEEKDAY VOL 3136 X SEASONAL ADJ. FACTOR 0.9100 = ESTIMATED AVG DAILY TRAFFIC 2854
FACTOR GROUP P07
AMD 2-AXLE EQUIVALENT

STATE OF WASHINGTON - DEPARTMENT OF TRANSPORTATION
TRIP SYSTEM
HOURLY TRAFFIC CLASSIFICATION SUMMARY

SR 014 MP 017.84 OFF SYSTEM ID. LEG 1 DIRECTION OF TRAFFIC BOTH WAYS LANE ALL OF

COUNT IDENTIFIER HPMS COUNTER NUMBER 000729 DESCRIPTION: ON SR 14 W/O 45TH ST

06-28-04 MONDAY AM HOURS	CARS PICKUPS	BUS	SINGLE MED	UNITS HVV	4+ UNIT %	SINGLE UNIT %	DOUBLE 4-5	UNITS 6+	DOUBLE UNIT %	5- 6	TRAINS 7+	TRAIN %	TRUCK %	CLASS UNKNOWN	TOTAL VEHICLES
12 - 1	318		24	4	7.3	3	14	4	5.5		2	2.6	15.4	7	384
1 - 2	317		19	3	6.5	4	13	2	4.9		8	3.1	14.5	14	387
2 - 3	362	4	25	2	7.2	5	8	4	4.0		12	2.1	13.3	14	428
3 - 4	377		17	3	4.6	8	13	3	5.5		9	.7	10.9	9	433
4 - 5	473	1	36	2	7.4	4	13	2	3.5		3	.6	11.5	4	539
5 - 6	437	1	27	2	6.2	4	8	2	2.3		2	.4	8.9	4	484
6 - 7	331		21	1	6.1	4	5	5	4.0		3	.8	10.9	3	375
7 - 8	235		13		4.7	4	11	4	6.9	1	1.8	1.8	13.5	2	274
8 - 9	199		10		4.5	4	4	2	2.7		4	1.3	9.0	2	221
9 - 10	208		12		5.1	3	7	1	4.7		3	1.3	11.1	2	234
10 - 11	125		3		3.6	3	3		4.3		3	2.2	10.1	2	139
11 - 12	69		5		5.6	4	4	5	10.0		5	5.6	21.1	2	90
AM TOTAL	3451	8	214	17	6.1	40	103	34	4.4		3	1.6	12.1	56	3988
PM TOTAL	3451	8	214	17	6.1	40	103	34	4.4		3	1.6	12.1	56	3988
DAY TOTAL	3451	8	214	17	6.1	40	103	34	4.4		3	1.6	12.1	56	3988
														2-AXLE EQUIVALENT	4416

SR 014 MP 017.84 OFF SYSTEM ID. LEG 1 DIRECTION OF TRAFFIC BOTH WAYS LANE ALL OF
 COUNT IDENTIFIER HPMS COUNTER NUMBER 000729 DESCRIPTION: ON SR 14 W/O 45TH ST

06-29-04	CARS	BUS	SINGLE	UNITS	SINGLE	DOUBLE	UNITS	DOUBLE	5-	TRAINS	TRAIN	TRUCK	CLASS	TOTAL
TUESDAY	PICKUPS		MED	HVY	UNIT %	4-	5+	UNIT %	6	7+	%	%	UNKNOWN	VEHICLES
AM HOURS														
12 - 1	47		4		7.0		3	7.0		2	3.5	17.5		57
1 - 2	22		3		10.3		2	6.9		2	6.9	24.1		29
2 - 3	18		1		4.3		2	8.7		2	8.7	21.7		23
3 - 4	25		1		3.4		2	6.9		2	6.9	10.3		29
4 - 5	59		2		7.5	1	3	1.5		1	1.5	10.4		67
5 - 6	191		12		7.2	2	3	3.6	2	3	1.8	12.6		222
6 - 7	286		26		8.8	3	5	3.3		3	.9	13.1		329
7 - 8	287		22		8.2	3	8	4.2		2	.6	13.0		331
8 - 9	268		21		7.5	1	9	4.7		11	3.5	15.7		318
9 - 10	259		21		7.7	2	10	4.2		9	2.9	14.8		311
10 - 11	276		20		8.0	6	11	6.0		7	2.4	16.4		336
11 - 12	276		15		6.0	3	13	6.0	1	13	3.9	15.8		335
PM HOURS														
12 - 1	290		23		8.0	3	14	6.0		4	1.1	15.1		350
1 - 2	316		21		6.6	4	11	5.3	2	9	2.9	14.8		379
2 - 3	361		22		6.0	4	10	3.6		6	1.4	11.0		418
3 - 4	367		26		6.9	5	8	3.5	1	6	1.7	12.1		423
4 - 5	425		25		5.2	7	9	4.1	2	6	1.6	10.9		485
5 - 6	441		27		6.3	5	6	2.4		4	.8	9.6		492
6 - 7	335		21		6.4	3	5	2.1	1	4	1.1	9.7		373
7 - 8	282		17		6.0	4	7	4.4		4	.9	11.3		318
8 - 9	218		12		5.9	2	6	4.2		2	.7	7.6		237
9 - 10	187		4		1.7	5	5	2.4		4	1.7	8.3		205
10 - 11	148		6		3.8	1	2	2.5		1	.6	6.9		159
11 - 12	103		3		2.7		2	4.4		2	1.8	8.8		113
AM TOTAL	2014		148		7.6	21	66	4.7		3	2.4	14.7		2387
PM TOTAL	3473		207		5.8	38	84	3.8		6	1.4	11.0		3952
DAY TOTAL	5487		355		6.5	59	150	4.1		9	1.8	12.4	68	6339
													2-AXLE EQUIVALENT	7023

SR 014 MP 017.84 OFF SYSTEM ID. LEG 1 DIRECTION OF TRAFFIC BOTH WAYS LANE ALL OF
 COUNT IDENTIFIER HPMS COUNTER NUMBER 000729 DESCRIPTION: ON SR 14 W/O 45TH ST

DATE	TIME	CARS PICKUPS	BUS	SINGLE MED	HVY	4+	SINGLE UNIT %	DOUBLE 4-	5	6+	DOUBLE UNIT %	5-	6	7+	TRAIN %	TRUCK %	CLASS UNKNOWN	TOTAL VEHICLES
06-30-04	WEDNESDAY	59		2			3.2		2	1	3.2			1	4.8	6.3		63
12	-	39		8			16.3				2.0			1	18.4	9.5		49
1	-	18									4.8			1	9.5	19.4		21
2	-	24									3.2			1	3.2	8.6		31
3	-	64					12.9	1	1	2	2.2			5	2.2	8.5		70
4	-	202		4			4.0		3	4	3.5			2	.6	13.9		223
5	-	263		9			9.7	3	4	6	2.9			2	.7	12.5		310
6	-	260		19			7.4	10	6	4	4.4			5	1.6	17.6		297
7	-	248		19			8.0	11	6	4	8.2			9	2.6	16.2		306
8	-	285		3			7.4	3	3	2	4.9			9	1.7	14.0		351
9	-	293		1			7.1	7	12	3	6.5			6	2.7	16.2		350
10	-	281		20										9				339
11	-																	
12	-																	
PM HOURS		354	1	21	3	1	6.6	6	12	5	5.8			7	1.8	14.2		394
1	-	344	3	13	1		4.3	4	13	5	5.6			9	2.3	12.2		395
2	-	326	3	22		2	8.9	5	4	5	3.7			3	.8	13.4		381
3	-	420		26			5.6	5	7	7	3.9			3	.8	10.4	13	483
4	-	437	2	29	1	1	7.1	6	7	1	2.8		1		.8	10.7		494
5	-	448		25			5.3	6	4	4	2.6			4	.8	8.7		492
6	-	308		15			3.8	2	4	3	2.3			5	1.3	7.3	3	398
7	-	366		17			5.0	3	6	6	3.1			5	.6	9.1		339
8	-	230	1	12	2		5.8	2	5	3	3.1		1	1	2.3	11.2	1	260
9	-	186		10			4.9	2	5	5	3.4			2	1.0	9.3		205
10	-	169		9			4.8	2	5	2	3.2			3	1.6	9.6	1	188
11	-	87		3			3.0	1	2	3	5.0			5	5.0	13.0		100
AM TOTAL		2036	10	152	15	4	7.5	28	64	28	5.0			40	1.7	14.1	33	2410
PM TOTAL		3655	10	202	18	4	5.7	42	74	36	3.7			50	1.3	10.7	34	4129
DAY TOTAL		5691	20	354	33	8	6.3	70	138	64	4.2			90	1.4	11.9	67	6539

2-AXLE EQUIVALENT 7202

SR 014 MP 017.84 OFF SYSTEM ID. LEG 1 DIRECTION OF TRAFFIC BOTH WAYS LANE ALL OF
 COUNT IDENTIFIER HPMS COUNTER NUMBER 000729 DESCRIPTION: ON SR 14 W/O 45TH ST

07-01-04 THURSDAY AM HOURS	CARS PICKUPS	BUS	SINGLE UNITS			DOUBLE UNITS			TRAINS			TRUCK %	CLASS UNKNOWN	TOTAL VEHICLES
			MED	HVY	4+	4-	5	6+	5-	6	7+			
12 - 1	47		3	1		1	2							59
11 - 1	26		1	1		1	3							33
10 - 1	9		1	1		1	4							19
9 - 1	18		4	1		1	4							25
8 - 1	51		1	1		1	1							58
7 - 1	181		9	3		7	1		1					211
6 - 1	287		28	4		1	7							336
5 - 1	300		24	2		2	10							349
4 - 1	285		22	4		2	10		1					337
3 - 1	282		22	3		2	10							335
2 - 1	295		28	8		5	8		1					359
1 - 1	303		26	6		2	16							376
12 - 1	340		22	5	1	10	4							404
11 - 1	361		21	5		12	3		2					427
10 - 1	362		21	3	2	9	2							414
9 - 1	444		30	7	1	6	2		1					516
8 - 1	525		38	4	2	12	4		1					594
7 - 1	441		20	1	1	9	3							493
6 - 1	366		19	1		9	4							405
5 - 1	327		24	1	1	12	1							366
4 - 1	247		12	1		5	1							273
3 - 1	231		9	1		5	4							259
2 - 1	184		5	1		4	2							200
1 - 1	109		1	1		2	2							121
AM TOTAL	2084	9	169	33	2	25	69	24	1	2	52	15.5	27	2497
PM TOTAL	3937	11	233	26	8	34	95	26	1	7	47	10.9	48	4472
DAY TOTAL	6021	20	402	59	10	59	164	50	1.6	9	99	12.5	75	6969
2-AXLE EQUIVALENT														7681

SR 014 MP 017.84 OFF SYSTEM ID. LEG 1 DIRECTION OF TRAFFIC BOTH WAYS LANE ALL OF
 COUNT IDENTIFIER HPMS COUNTER NUMBER 000729 DESCRIPTION: ON SR 14 W/O 45TH ST

07-02-04	CARS PICKUPS	BUS MED	SINGLE HVY	4+	SINGLE UNIT %	DOUBLE 4-	5	6+	DOUBLE UNIT %	5-	TRAINS 6	7+	TRAIN %	TRUCK %	CLASS UNKNOWN	TOTAL VEHICLES
FRIDAY AM HOURS	61	1	3	1	1.5	2	1	1	3.0	2	2	2	3.0	7.6	1	66
12 - 1	32	1	1	1	7.1	1	1	1	11.9	1	1	1	2.4	21.4	1	42
1 - 2	34	1	1	1	5.3	1	1	1	2.6	1	1	1	2.6	10.5	1	38
2 - 3	36	2	1	1	4.8	1	1	1	7.1	1	1	1	2.4	14.3	1	42
3 - 4	46	1	1	1	3.6	2	2	1	9.1	1	1	1	1.8	14.5	1	55
4 - 5	165	12	2	2	7.4	1	4	1	3.2	3	4	4	2.1	12.7	3	189
5 - 6	232	4	19	5	9.9	4	6	5	5.3	5	5	5	1.8	17.0	3	283
6 - 7																
7 - 8																
8 - 9																
9 - 10																
10 - 11																
11 - 12																
PM HOURS	1															
12 - 1	2															
1 - 2	3															
2 - 3	4															
3 - 4	5															
4 - 5	6															
5 - 6	7															
6 - 7	8															
7 - 8	9															
8 - 9	10															
9 - 10	11															
10 - 11	12															
11 - 12																
AM TOTAL	606	4	39	9	7.3	10	16	11	5.2	15	15	15	2.1	14.5	5	715
PM TOTAL	606	4	39	9	7.3	10	16	11	5.2	15	15	15	2.1	14.5	5	715
DAY TOTAL	606	4	39	9	7.3	10	16	11	5.2	15	15	15	2.1	14.5	5	715

06-28-04 THRU 07-02-04

AVERAGE WEEKDAY CLASSIFICATION VOLUMES *****
 CARS PICKUPS | BUS MED HVY | SINGLE UNIT % | DOUBLE UNITS | DOUBLE UNIT % | 5- | TRAINS 6 | 7+ | TRAIN % | TRUCK % | CLASS UNKNOWN | TOTAL VEHICLES
 5733 | 18 | 370 | 43 | 7 | 6.6 | 63 | 151 | 55 | 4.1 | 7 | 97 | 1.6 | 12.3 | 70 | 6616
 AND 2-AXLE EQUIVALENT 7299

TOTAL HOURS FOR COUNT 91
 3 DAYS 6616 X SEASONAL ADJ. FACTOR 0.9100 = ESTIMATED AVG DAILY TRAFFIC 6021

PEAK HOUR PERCENTAGES: K = 8.98 D = 51.01 T = 11.28
 PEAK HOUR LOCATION : VOLUME = 594 DATE: 07/01/04 TIME: 04:00 PM

0.9064

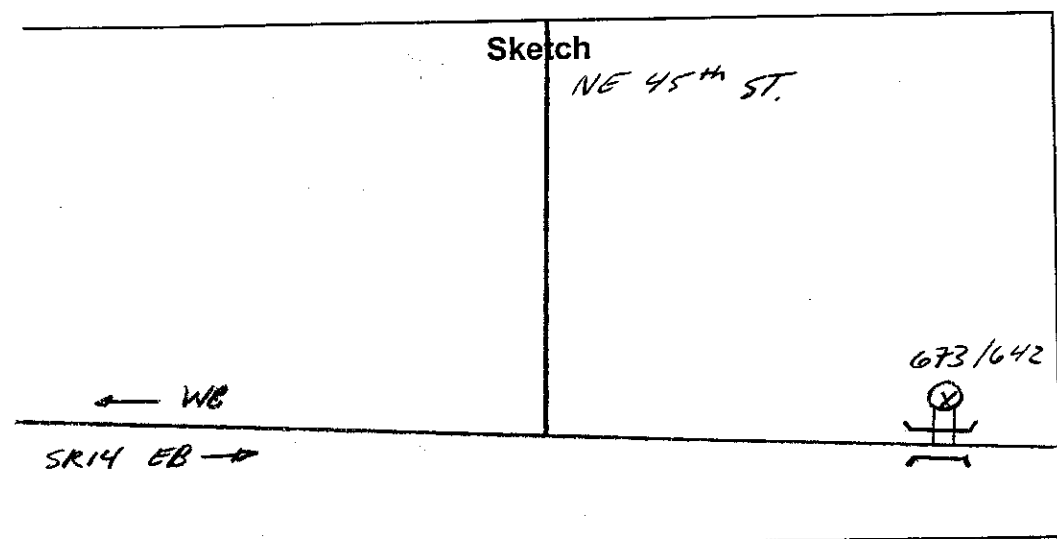
GK Traffic Counter

Interval 60 Min. 15 Min.
 2 Tube Classification
 Lane No. 1 2
 1 Channel Tube A+B
 2 Channel Tube A, B
 Direction Channel A _____
 Direction Channel B _____
 Module No. 21468 / 17557

Counter No. 673/642 Count ID HPMMS
 SR 14 RRT _____ MP 17.84
 Leg 2 Direction WB OSID _____

Station Description - ON SR14 E/O 45th ST.

Date	Day	Time	Comments
6/28/04	2	1145	Manual A <u>4</u> B _____ Counter A <u>4</u> B _____ <i>Set o.k. JIM 6.5</i>
6/29	3	0945	Manual A <u>17</u> B _____ Counter A <u>16</u> B _____ <i>ctr called 8-13, 8-0 check o.k. JIM 6.4</i>
6/30	4	0834	Manual A <u>13</u> B _____ Counter A <u>13</u> B _____ <i>calling all cars 2-3/pulled mod New ctr #642 #2146B at 0833 New Mod # 17557 at 0834 check JIM 6.6</i>
7/1	5	0820	Manual A <u>7</u> B _____ Counter A <u>7</u> B _____ <i>check o.k. JIM 6.6</i>
7/2	6	0814	Manual A <u>1</u> B _____ Counter A <u>1</u> B _____ <i>PIU JIM 6.6</i>



J. Mills

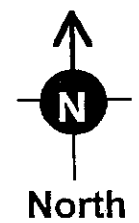
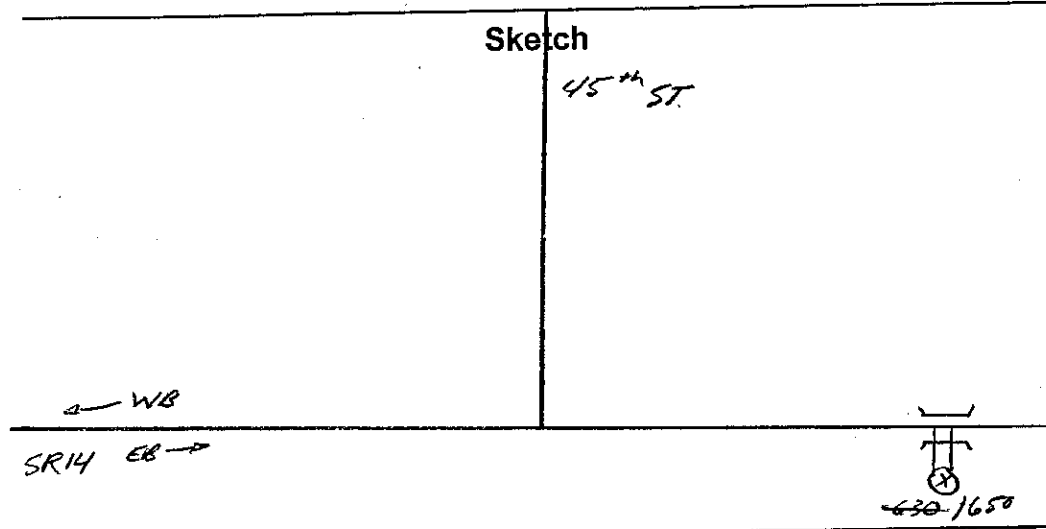
GK Traffic Counter

Interval 60 Min. 15 Min.
 2 Tube Classification
 Lane No. 1 2
 1 Channel Tube A+B
 2 Channel Tube A, B
 Direction Channel A _____
 Direction Channel B _____
 Module No. 21441/17265

Counter No. 630/650 Count ID HPMS
 SR 14 RRT _____ MP 17.84
 Leg 2 Direction EB OSID _____

Station Description - ON SR14 E/O 45th ST.

Date	Day	Time	Comments
6/28/04	2	1142	Manual A <u>3</u> B _____ Counter A <u>3</u> B _____ Set o.k. JMM 6.7
6/29	3	0939	Manual A <u>8</u> B _____ Counter A <u>8</u> B _____ ctr dead / pulled Mod # 21441 at 0938 New ctr # 650 New Mod # 17265 at 0939 check JMM 6.7
6/30	4	0817	Manual A <u>5</u> B _____ Counter A <u>5</u> B _____ check o.k. JMM 6.7
7/1	5	0826	Manual A <u>8</u> B _____ Counter A <u>8</u> B _____ check o.k. JMM 6.7
7/2	6	0813	Manual A <u>1</u> B _____ Counter A <u>1</u> B _____ P/O JMM 6.7



J. Mills

Field Person

DOT-RNBS05A-B

STATE OF WASHINGTON - DEPARTMENT OF TRANSPORTATION
TRIP SYSTEM
HOURLY TRAFFIC CLASSIFICATION SUMMARY

DATE 10/28/04
TIME 08:34:01
PAGE 1

SR 014 MP 017.84 OFF SYSTEM ID. LEG 2 DIRECTION OF TRAFFIC WESTBOUND LANE ALL OF

COUNT IDENTIFIER HPMS COUNTER NUMBER 000673 * DESCRIPTION: ON SR 14 E/O 45TH ST

06-28-04 MONDAY AM HOURS	CARS PICKUPS	BUS	SINGLE MED	UNITS HVV	4+	SINGLE UNIT %	DOUBLE 4-	UNITS 5	6+	DOUBLE UNIT %	5-	TRAINS 6	7+	TRAIN %	TRUCK %	CLASS UNKNOWN	TOTAL VEHICLES
1	1																
2	2																
3	3																
4	4																
5	5																
6	6																
7	7																
8	8																
9	9																
10	10																
11	11																
12	12																
PM HOURS																	
1	1																
2	2																
3	3																
4	4																
5	5																
6	6																
7	7																
8	8																
9	9																
10	10																
11	11																
12	12																
AM TOTAL	691	13	151	13	4	19.5	16	13	4	3.6		9	1.0	24.1	12	926	
PM TOTAL	691	13	151	13	4	19.5	16	13	4	3.6		9	1.0	24.1	12	926	
DAY TOTAL	691	13	151	13	4	19.5	16	13	4	3.6		9	1.0	24.1	12	926	

257
193
139
101
74
54
34
BRD
CLASS

2-AXLE EQUIVALENT

SR 014 MP 017.84 OFF SYSTEM ID. COUNTER NUMBER 000673 * DESCRIPTION: ON SR 14 E/O 45TH ST LANE ALL OF

DAY	TOTAL	CARS PICKUPS	BUS	SINGLE MED	SINGLE HVY	4+	DOUBLE UNITS			DOUBLE UNIT %	5-	6	7+	TRAIN %	TRUCK %	CLASS UNKNOWN	TOTAL VEHICLES
							4-	5	6+								
06-29-04																	
TUESDAY																	
AM HOURS																	
12 -	1	7		1					10.0							10	
1 -	2	5		2					25.0							8	
2 -	3	4		3					45.5							11	
3 -	4	9	1	3					25.0							12	
4 -	5	29	2	6					21.6							37	
5 -	6	92	3	20					19.7							21.4	
6 -	7	151	2	50					24.9							28.2	
7 -	8	140	1	28					17.7							21.5	
8 -	9	108	2	28					21.0							28.1	
9 -	10	100	3	23					17.8							24.0	
10 -	11	100	3	16					15.1							27.3	
11 -	12	102	2	22					19.0							30.7	
PM HOURS																	
12 -	1	106	6	28					22.4							28.3	
1 -	2	127	3	27					19.9							26.1	
2 -	3	116	5	32					22.9							29.5	
3 -	4	140	1	36					20.2							27.3	
4 -	5	140	2	36					19.5							26.2	
5 -	6	153	1	33					18.2							23.2	
6 -	7	104	1	18					15.9							21.2	
7 -	8	94	1	10					10.4							14.8	
8 -	9	67	1	9					14.3							20.2	
9 -	10	60	1	16					23.8							27.4	
10 -	11	41	1	8					18.5							22.2	
11 -	12	24	1	3					15.2							21.2	
AM TOTAL	867	19	201	15					19.9							26.2	
PM TOTAL	1172	22	256	17					19.0							24.7	
DAY TOTAL	2039	41	457	32					19.4							25.4	

2-AXLE EQUIVALENT 40

2786

Bad
class

SR 014 MP 017.84 OFF SYSTEM ID. LEG 2 DIRECTION OF TRAFFIC WESTBOUND LANE ALL OF

COUNT IDENTIFIER HPMS COUNTER NUMBER 000673 * DESCRIPTION: ON SR 14 E/O 45TH ST

DAY	AM TOTAL	PM TOTAL	TOTAL	TRAFFIC CLASSIFICATION										TOTAL VEHICLES							
				CARS PICKUPS	BUS	SINGLE MED	UNITS HVY	4+	SINGLE UNIT %	DOUBLE 4-	5	6+	DOUBLE UNIT %		5- TRAINS	6	7+	TRAIN %	TRUCK	CLASS UNKNOWN	
06-30-04	12	1	13	9	4	2	1	1	1	1	1	1	1	1	1	1	1	1	1	1	17
WEDNESDAY	11	2	13	9	4	2	1	1	1	1	1	1	1	1	1	1	1	1	1	1	17
AM HOURS	12	1	13	9	4	2	1	1	1	1	1	1	1	1	1	1	1	1	1	1	17
12 -	1	2	3	6	1	1	1	1	1	1	1	1	1	1	1	1	1	1	1	1	13
1 -	2	3	5	9	1	1	1	1	1	1	1	1	1	1	1	1	1	1	1	1	13
2 -	3	4	7	6	1	1	1	1	1	1	1	1	1	1	1	1	1	1	1	1	13
3 -	4	5	9	9	1	1	1	1	1	1	1	1	1	1	1	1	1	1	1	1	13
4 -	5	6	11	13	1	1	1	1	1	1	1	1	1	1	1	1	1	1	1	1	13
5 -	6	7	13	16	1	1	1	1	1	1	1	1	1	1	1	1	1	1	1	1	13
6 -	7	8	15	19	1	1	1	1	1	1	1	1	1	1	1	1	1	1	1	1	13
7 -	8	9	17	22	1	1	1	1	1	1	1	1	1	1	1	1	1	1	1	1	13
8 -	9	10	19	24	1	1	1	1	1	1	1	1	1	1	1	1	1	1	1	1	13
9 -	10	11	21	26	1	1	1	1	1	1	1	1	1	1	1	1	1	1	1	1	13
10 -	11	12	23	28	1	1	1	1	1	1	1	1	1	1	1	1	1	1	1	1	13
11 -	12	1	24	29	1	1	1	1	1	1	1	1	1	1	1	1	1	1	1	1	13
12 -	1	2	25	30	1	1	1	1	1	1	1	1	1	1	1	1	1	1	1	1	13
PM HOURS	11	2	13	9	4	2	1	1	1	1	1	1	1	1	1	1	1	1	1	1	17
11 -	11	2	13	9	4	2	1	1	1	1	1	1	1	1	1	1	1	1	1	1	17
10 -	11	2	13	9	4	2	1	1	1	1	1	1	1	1	1	1	1	1	1	1	17
11 -	12	1	13	9	4	2	1	1	1	1	1	1	1	1	1	1	1	1	1	1	17
12 -	1	2	13	9	4	2	1	1	1	1	1	1	1	1	1	1	1	1	1	1	17
1 -	2	3	15	11	1	1	1	1	1	1	1	1	1	1	1	1	1	1	1	1	15
2 -	3	4	17	13	1	1	1	1	1	1	1	1	1	1	1	1	1	1	1	1	15
3 -	4	5	19	15	1	1	1	1	1	1	1	1	1	1	1	1	1	1	1	1	15
4 -	5	6	21	17	1	1	1	1	1	1	1	1	1	1	1	1	1	1	1	1	15
5 -	6	7	23	19	1	1	1	1	1	1	1	1	1	1	1	1	1	1	1	1	15
6 -	7	8	25	21	1	1	1	1	1	1	1	1	1	1	1	1	1	1	1	1	15
7 -	8	9	27	23	1	1	1	1	1	1	1	1	1	1	1	1	1	1	1	1	15
8 -	9	10	29	25	1	1	1	1	1	1	1	1	1	1	1	1	1	1	1	1	15
9 -	10	11	31	27	1	1	1	1	1	1	1	1	1	1	1	1	1	1	1	1	15
10 -	11	12	33	29	1	1	1	1	1	1	1	1	1	1	1	1	1	1	1	1	15
11 -	12	1	34	30	1	1	1	1	1	1	1	1	1	1	1	1	1	1	1	1	15
12 -	1	2	35	31	1	1	1	1	1	1	1	1	1	1	1	1	1	1	1	1	15
DAY TOTAL	2198	24	239	18	7	10.7	36	54	26	4.3	47	1.8	16.8	32	2681	2984					
AM TOTAL	792	19	137	8	3	16.2	15	17	5	3.6	19	1.8	21.6	16	1031	1650					
PM TOTAL	1406	5	102	10	4	7.3	21	37	21	4.8	28	1.7	13.8	16	1650						
2-AXLE EQUIVALENT																					

bad class

SR 014 MP 017.84 OFF SYSTEM ID. LEG 2 DIRECTION OF TRAFFIC WESTBOUND LANE ALL OF
COUNT IDENTIFIER HPMS COUNTER NUMBER 000673 * DESCRIPTION: ON SR 14 E/O 45TH ST

THURSDAY AM HOURS	CARS PICKUPS	BUS	SINGLE MED	UNITS HVV	4+	SINGLE UNIT %	DOUBLE 4-	UNITS 5	6+	DOUBLE UNIT %	5-	TRAINS 6	7+	TRAIN %	TRUCK %	CLASS UNKNOWN	TOTAL VEHICLES
12 - 1	9						1		2	25.0			3	18.8	43.8		16
1 - 2	6					11.1		1		33.3					44.4		9
2 - 3	5					15.4		3		33.3					15.4		9
3 - 4	11																13
4 - 5	28																29
5 - 6	108																121
6 - 7	166					3.3		6	1	6.6			4	2.0	9.9	1	121
7 - 8	166					14.1		1	4	2.9			5	2.7	19.0	1	205
8 - 9	162					5.5		2	1	2.7			2	1.4	10.9	1	183
9 - 10	125					6.3		5	1	4.2			2	1.4	12.0	2	142
10 - 11	125					8.0		3	1	1.9			2	1.2	15.4	1	162
11 - 12	124					16.0		5	5	5.5			4	1.2	22.7	1	163
PM HOURS						11.2		9	5	9.3				2.5	23.0		161
12 - 1	141					8.3		4	1	4.1			6	3.6	16.0	1	169
1 - 2	139					8.9		3	5	5.4			4	2.4	16.7	1	168
2 - 3	145					6.9		4	3	5.2			4	2.3	14.5	1	173
3 - 4	227					9.4		4	4	2.6			6	2.2	14.2	3	267
4 - 5	214					7.2		8	2	4.8			2	.8	12.9	3	249
5 - 6	169					4.7		6	1	5.2			1	1.0	11.0	1	191
6 - 7	116					7.5		6	6	4.5			1	.7	12.7	1	134
7 - 8	115					6.8		6	1	5.3			1	.8	12.9	1	132
8 - 9	87					3.0		3	1	5.1			1	3.0	11.1	1	99
9 - 10	71					9.6		3	3	2.4			2	2.4	14.5		83
10 - 11	49					7.1		2	1	3.6			1	1.8	12.5		56
11 - 12	29					9.1		1	1	3.0					12.1		33
AM TOTAL	1004					9.2		9	15	5.1			29	2.4	16.7	6	1213
PM TOTAL	1502					7.4		14	15	4.4			30	1.8	13.6	13	1754
DAY TOTAL	2506					8.2		23	30	4.7			59	2.1	14.9	19	2967
																	3348

2-AXLE EQUIVALENT

STATE OF WASHINGTON - DEPARTMENT OF TRANSPORTATION
TRIP SYSTEM
HOURLY TRAFFIC CLASSIFICATION SUMMARY

SR 014 MP 017.84 OFF SYSTEM ID. LEG 2 DIRECTION OF TRAFFIC WESTBOUND LANE ALL OF
COUNT IDENTIFIER HPMS COUNTER NUMBER 000673 * DESCRIPTION: ON SR 14 E/O 45TH ST

07-02-04	CARS PICKUPS	BUS MED	SINGLE UNITS HVY	4+	SINGLE UNIT %	DOUBLE UNITS 4-	5	6+	DOUBLE UNIT %	5-	6	7+	TRAIN %	TRUCK %	CLASS UNKNOWN	TOTAL VEHICLES
FRIDAY	13	1	1	1	10.0	2	1	1	40.0					50.0		14
AM HOURS	5	10	11	1	15.4		1		7.7			1		23.1		10
12 - 1	10	11	1	1	7.7		1		7.7			1		15.4		13
2 - 3	11	1	1	1	3.1		2		6.3			1		12.5		13
3 - 4	26	4	1	1	3.7		2		1.9			1		7.4		32
4 - 5	100	16	2	2	11.4		2		3.2			2		15.8		108
5 - 6	130	8	2	3	5.7		3		4.3			5		13.5		158
6 - 7	121															141
7 - 8																
8 - 9																
9 - 10																
10 - 11																
11 - 12																
PM HOURS	1															
12 - 1	2															
1 - 2	3															
2 - 3	4															
3 - 4	5															
4 - 5	6															
5 - 6	7															
6 - 7	8															
7 - 8	9															
8 - 9	10															
9 - 10	11															
10 - 11	12															
11 - 12																
AM TOTAL	416		31	4	7.2	4	11	6	4.3			10	2.0	13.5		489
PM TOTAL																7
DAY TOTAL	416		31	4	7.2	4	11	6	4.3			10	2.0	13.5		489

06-28-04 THRU 07-02-04
AVERAGE WEEKDAY CLASSIFICATION VOLUMES *****
CARS PICKUPS | BUS MED HVY | 4+ | SINGLE UNIT % | DOUBLE UNITS 4- | 5 | 6+ | DOUBLE UNIT % | 5- | 6 | 7+ | TRAIN % | TRUCK % | CLASS UNKNOWN | TOTAL VEHICLES

AVG WEEKDAY VOLUME 2273
CARS PICKUPS 25
BUS MED 328
HVY 33
4+ 6
SINGLE UNIT % 13.6
DOUBLE UNITS 4- 40
5 62
6+ 23
DOUBLE UNIT % 4.3
5- 2
6 2
7+ 58
TRAIN % 2.0
TRUCK % 13.5
CLASS UNKNOWN 7
TOTAL VEHICLES 489

2967

2700

2877
2967
3231
3348

DOT-RNB505A-B

STATE OF WASHINGTON - DEPARTMENT OF TRANSPORTATION
TRIP SYSTEM
HOURLY TRAFFIC CLASSIFICATION SUMMARY

DATE 10/28/04
TIME 08:34:01
PAGE 6

SR 014 MP 017.84 OFF SYSTEM ID. LEG 2 DIRECTION OF TRAFFIC EASTBOUND LANE ALL OF

COUNT IDENTIFIER HPMS COUNTER NUMBER 000650 DESCRIPTION: ON SR 14 E/O 45TH ST

06-29-04 TUESDAY AM HOURS	CARS PICKUPS	BUS	SINGLE MED	UNITS HVV	4+	SINGLE UNIT %	DOUBLE UNITS 4-	5	6+	DOUBLE UNIT %	5-	TRAINS 6	7+	TRAIN %	TRUCK %	CLASS UNKNOWN	TOTAL VEHICLES
1	112		10	1		7.6	2	13	3	12.5			3	2.1	22.2		144
2	114		11	1		8.3	2	7	8	7.6			8	5.5	21.4		145
3	146		7	1		4.7	1	11	5	7.6			5	2.9	15.1		172
4	144	1	11			7.6	1	8	4	5.8			4	2.3	15.8		171
5	172		12			6.1	3	6	2	6.1			2	1.0	13.1		198
6	172	1	16			8.5	2	4	1	3.0			4	2.0	14.0		200
7	149	1	9		1	6.5	3	1	1	5.8			3	1.8	11.3		168
8	116	1	13			10.1	5	5	3	5.8			3	.7	16.5		139
9	91		3			2.9	2	2	2	5.8			3	2.9	11.7		103
10	69		3			3.9	2	4	1	5.3			1	1.9	9.2		76
11	53		2			4.1	2	2	1	4.1			1	2.0	10.2		54
12	44		2			4.1	2	2	1	4.1			1	2.0	10.2		49
AM TOTAL	204	1	16	7		9.2	3	17	2	8.4			11	4.2	21.8		261
PM TOTAL	1382	4	97	4	1	6.5	19	63	15	6.0			34	2.1	14.6		1619
DAY TOTAL	1586	5	113	11	1	6.9	22	80	17	6.3			45	2.4	15.6		1880
															2-AXLE EQUIVALENT		2175

DOT-RNB505A-B

STATE OF WASHINGTON - DEPARTMENT OF TRANSPORTATION
TRIP SYSTEM
HOURLY TRAFFIC CLASSIFICATION SUMMARY

DATE 10/28/04
TIME 08:34:01
PAGE 7

SR 014 MP 017.84 OFF SYSTEM ID. LEG 2 DIRECTION OF TRAFFIC EASTBOUND LANE ALL OF

COUNT IDENTIFIER HPMS COUNTER NUMBER 000650 DESCRIPTION: ON SR 14 E/O 45TH ST

DAY	AM HOURS	PM HOURS	CARS PICKUPS	BUS	SINGLE MED	SINGLE HVY	4+	SINGLE UNIT %	DOUBLE 4-	DOUBLE 5	DOUBLE 6+	DOUBLE UNIT %	5-	TRAINS 6	TRAINS 7+	TRAIN %	TRUCK %	CLASS UNKNOWN	TOTAL VEHICLES
06-30-04	12	1	23		4			28.6									4.2		24
WEDNESDAY	1	2	10		1			25.0		2		25.0			1	8.3	28.6		14
AM HOURS	2	3	8		2			20.0	1			5.0				4.3	25.0		8
	3	4	15		3			6.4		1		4.3				8.6	33.3		12
	4	5	42		3			7.1	2	1		9.9				9.9	25.0		20
	5	6	58		3			9.9	2	1		8.6				10.6	17.1		47
	6	7	72	1	3		1	7.1	2	1		9.9				7.0	20.9		70
	7	8	68	1	9			12.5	1	5		17.3		1		4.8	34.6		91
	8	9	89	2	12			11.8	3	10		14.2				3.9	29.9		104
	9	10	107	2	8			7.4	3	9		8.9				4.4	20.7		127
	10	11	106	1	13			11.5	2	8		8.6				3.6	23.7		135
	11	12																	139
PM HOURS	1	2	144	1	7			5.8	3	9		8.7				2.3	16.8		173
	2	3	125	1	4			3.4	1	8		7.4				5.4	16.1		149
	3	4	116		11		6	12.3	1	7		2.9				7	15.9		138
	4	5	171		13		2	6.4	4	7		6.9				2.5	15.8		203
	5	6	187		14			7.5	2	5		3.7		1		1.4	12.6		173
	6	7	170		7			3.7	2	4		3.7				2.1	9.6		188
	7	8	158	1	4			2.9	4	2		4.0				1.7	8.7		173
	8	9	137		12			7.6	2	4		3.8				1.3	12.7		157
	9	10	89	1	2		2	5.0	1	1		2.0				5.0	11.9		101
	10	11	75		5			5.7	3	3		6.8				2.3	14.8		88
	11	12	68		5			6.3	1	3		5.1				2.5	13.9		79
	12		30		2			5.4	1	1		10.8				2.7	18.9		37
AM TOTAL	604	10	66	5	2			10.5	17	44		10.1				3.0	23.6		791
PM TOTAL	1470	4	86	12	2			6.0	24	49		5.2		1		2.4	13.5		1700
DAY TOTAL	2074	14	152	17	2			7.4	41	93		6.7		1		2.6	16.7		2491
2-AXLE EQUIVALENT																			
																			2910

STATE OF WASHINGTON - DEPARTMENT OF TRANSPORTATION
 TRIP SYSTEM
 HOURLY TRAFFIC CLASSIFICATION SUMMARY

SR 014 MP 017.84 OFF SYSTEM ID. LEG 2 DIRECTION OF TRAFFIC EASTBOUND LANE ALL OF
 COUNT IDENTIFIER HPMS COUNTER NUMBER 000650 DESCRIPTION: ON SR 14 E/O 45TH ST

07-02-04	CARS PICKUPS	BUS	SINGLE MED	HVY	4+	SINGLE UNIT %	DOUBLE 4-	5	6+	DOUBLE UNIT %	5-	TRAINS 6	7+	TRAIN %	TRUCK %	CLASS UNKNOWN	TOTAL VEHICLES
FRIDAY	28		2			11.1		1	1	6.5			2	3.2	27.8		31
AM HOURS	13		1			9.1				5.6			1	11.1	9.1		18
12 - 1	10														9.1		11
1 - 2	16														15.8		19
2 - 3	10														23.1		13
3 - 4	10		1			7.7		2	1	10.5			1	5.3	31.0		42
4 - 5	29		5			16.7		3	3	9.5			2	4.8	28.2		78
5 - 6	56		5			10.3		2	1	11.5			5	6.4	17.9		106
6 - 7	87		7			10.4		2	2	3.8			4	3.8			
7 - 8																	
8 - 9																	
9 - 10																	
10 - 11																	
11 - 12																	
AM TOTAL	249		3	21	6	9.4		9	8	7.5			15	4.7	21.7		318
PM TOTAL	249		3	21	6	9.4		9	8	7.5			15	4.7	21.7		318
DAY TOTAL	249		3	21	6	9.4		9	8	7.5			15	4.7	21.7		318

06-29-04 THRU 07-02-04
 AVERAGE WEEKDAY CLASSIFICATION VOLUMES *****
 CARS PICKUPS | BUS MED HVY | SINGLE UNIT % | DOUBLE 4- | 5 | 6+ | DOUBLE UNIT % | 5- | TRAINS 6 | 7+ | TRAIN % | TRUCK % | CLASS UNKNOWN | TOTAL VEHICLES
 2171 | 11 | 162 | 22 | 3 | 7.6 | 41 | 92 | 34 | 6.4 | 1 | 1 | 67 | 2.7 | 16.7 | 2603
 70 | 2369 | 3037
 2-DAY AND 2-AXLE EQUIVALENT

06-29-04 THRU 07-02-04
 AVERAGE WEEKDAY CLASSIFICATION VOLUMES *****
 CARS PICKUPS | BUS MED HVY | SINGLE UNIT % | DOUBLE 4- | 5 | 6+ | DOUBLE UNIT % | 5- | TRAINS 6 | 7+ | TRAIN % | TRUCK % | CLASS UNKNOWN | TOTAL VEHICLES
 2171 | 11 | 162 | 22 | 3 | 7.6 | 41 | 92 | 34 | 6.4 | 1 | 1 | 67 | 2.7 | 16.7 | 2603
 70 | 2369 | 3037
 2-DAY AND 2-AXLE EQUIVALENT

STATE OF WASHINGTON - DEPARTMENT OF TRANSPORTATION
TRIP SYSTEM
HOURLY TRAFFIC CLASSIFICATION SUMMARY

DATE 10/28/04
TIME 08:34:01
PAGE 10

SR 014 MP 017.84 OFF SYSTEM ID. LEG 2 DIRECTION OF TRAFFIC BOTH WAYS LANE ALL OF

COUNT IDENTIFIER HPMS COUNTER NUMBER 000650 DESCRIPTION: ON SR 14 E/O 45TH ST

06-29-04	TUESDAY	CARS PICKUPS	BUS	SINGLE MED	UNITS HVY	4+	SINGLE UNIT %	DOUBLE 4-	UNITS 5	6+	DOUBLE UNIT %	5-	TRAINS 6	7+	TRAIN %	TRUCK %	CLASS UNKNOWN	TOTAL VEHICLES
12	1	1					8.5	1	2	1	3.7			2	2.4	14.6	2	82
11	11	94	1	8	3	1	9.3	1	6	1	4.4			4	2.1	18.8	1	160
10	10	129	1	12	2	1	8.0	5	3	2	5.3			4	2.1	15.5	4	187
9	9	158	2	19	1	1	10.2	3	4	1	3.9			4	1.6	15.7	4	254
8	8	210	1	23	2	2	10.7	5	4	1	3.3			5	1.7	15.7	3	300
7	7	253	2	27	2	1	13.4	8	5	1	3.5			7	1.3	18.6	3	403
6	6	325	2	49	2	2	12.4	9	4	1	5.4			6	2.2	19.6	4	393
5	5	312	2	48	2	2	12.7	9	8	4	5.3			8	2.2	22.0	4	369
4	4	284	2	47	2	2	14.4	10	13	1	5.9			9	2.7	22.2	1	338
3	3	262	5	39	2	1	13.6	5	9	2	5.9			11	3.4	24.0	3	321
2	2	241	3	38	1	1	15.2	4	14	4	8.1			6	2.0	25.3	3	296
1	1	218	6	38	5	1	14.6	6	9	4	8.1			6	3.4	25.3	3	296
PM HOURS	12	202	3	27	8	1	13.5	7	14	2	8.2			15	5.3	27.0	4	282
10	10	204	3	27	5	1	13.3	6	13	2	7.7			9	3.3	24.4	1	271
11	11	202	3	27	8	1	13.5	7	14	2	8.2			15	5.3	27.0	4	282
AM HOURS	12	218	6	38	1	1	15.2	6	14	4	8.1			6	2.0	25.3	3	296
11	11	241	3	38	5	1	14.6	4	9	4	8.1			6	3.4	25.3	3	296
12	12	262	5	39	2	1	13.6	5	13	2	5.9			11	3.4	24.0	3	321
1	1	284	2	47	2	2	14.4	9	10	1	5.4			8	2.2	22.0	4	369
2	2	312	2	48	2	2	12.7	9	8	4	5.3			8	2.2	22.0	4	369
3	3	325	2	49	2	1	13.4	8	5	1	5.3			6	1.3	18.6	3	393
4	4	253	2	27	2	2	10.7	9	4	1	3.5			7	1.3	18.6	3	403
5	5	312	2	48	2	2	12.4	9	8	4	5.4			8	2.2	22.0	4	369
6	6	284	2	47	2	2	14.4	10	13	1	5.9			9	2.7	22.2	1	338
7	7	262	3	38	1	1	15.2	6	14	4	8.1			6	3.4	24.0	3	296
8	8	241	6	38	5	1	14.6	4	9	4	8.1			6	3.4	24.0	3	296
9	9	218	3	38	1	1	13.6	5	13	2	5.9			11	3.4	24.0	3	321
10	10	202	3	27	8	1	13.5	7	14	2	8.2			15	5.3	27.0	4	282
11	11	204	3	27	5	1	13.3	6	13	2	7.7			9	3.3	24.4	1	271
12	12	202	3	27	8	1	13.5	7	14	2	8.2			15	5.3	27.0	4	282
AM TOTAL		406	6	54	13	1	13.4	13	27	4	8.0			24	4.3	25.7	5	553
PM TOTAL		2554	26	353	21	8	12.7	57	80	23	5.0			63	2.0	19.7	26	3211
DAY TOTAL		2960	32	407	34	9	12.8	70	107	27	5.4			87	2.3	20.5	31	3764

2-AXLE EQUIVALENT

STATE OF WASHINGTON - DEPARTMENT OF TRANSPORTATION
TRIP SYSTEM
HOURLY TRAFFIC CLASSIFICATION SUMMARY

SR 014	MP 017.84	OFF SYSTEM ID.	COUNTER NUMBER 000650	LEG 2	DESCRIPTION: ON SR 14 E/O 45TH ST	DIRECTION OF TRAFFIC BOTH WAYS	LANE ALL OF
06-30-04							
WEDNESDAY	CARS	BUS	SINGLE	UNITS	4+	SINGLE	DOUBLE
AM HOURS	PICKUPS	MED	HVY	UNIT %	4-	5	6+
12 - 1	32	3	1	19.5	1	2	1
1 - 2	19	4	1	25.9	1	2	1
2 - 3	12	1	1	16.0	1	2	2
3 - 4	17	2	1	13.2	1	2	2
4 - 5	45	4	1	20.8	3	3	2
5 - 6	128	6	1	21.9	3	3	2
6 - 7	193	4	1	15.8	4	5	2
7 - 8	193	4	1	15.8	4	5	2
8 - 9	237	2	2	8.7	4	13	13
9 - 10	225	2	2	9.0	3	14	9
10 - 11	224	2	2	8.8	7	14	9
11 - 12	224	2	2	8.8	7	14	9
PM HOURS							
12 - 1	262	1	3	7.1	7	15	9
1 - 2	280	2	2	5.4	1	14	12
2 - 3	264	2	2	10.6	5	6	4
3 - 4	353	2	1	6.3	5	10	7
4 - 5	353	2	3	8.3	6	8	5
5 - 6	337	1	1	6.3	2	5	4
6 - 7	290	1	1	4.4	2	4	5
7 - 8	249	1	1	6.0	3	7	2
8 - 9	179	1	2	5.8	5	5	2
9 - 10	139	1	2	4.5	3	5	2
10 - 11	117	1	1	7.2	1	5	5
11 - 12	53	3	1	5.9	1	2	5
AM TOTAL							
	1328	27	11	13.8	25	53	38
PM TOTAL							
	2876	9	22	6.7	45	86	67
DAY TOTAL	4204	36	33	9.1	70	139	105
2-AXLE EQUIVALENT							
							2.1
TOTAL VEHICLES							
	5068	32	16	16.4	32	1718	1718
	5751	16	16	5.8	1	36	350
				5.0			350

SR 014 MP 017-84 OFF SYSTEM ID. LEG 2 DIRECTION OF TRAFFIC BOTH WAYS LANE ALL OF
 COUNT IDENTIFIER HPM5 COUNTER NUMBER 000650 DESCRIPTION: ON SR 14 E/O 45TH ST

07-02-04

FRIDAY AM HOURS	CARS PICKUPS	BUS	SINGLE MED	UNITS HVY	4+	SINGLE UNIT %	DOUBLE UNITS	5-	TRAINS	7+	TRAIN %	TRUCK %	CLASS UNKNOWN	TOTAL VEHICLES
12 - 1	41		3			10.7	2		1	1	4.4	6.7	1	45
11 - 2	18		2			12.5	1		2	2	17.9	7.1		28
10 - 3	27		1			3.1	1		1	1	9.4	16.7		24
9 - 4	36		1			4.4	2		1	1	8.9	15.6		32
8 - 5	129		9			7.3	1		1	1	2.2	15.6	2	45
7 - 6	186		21			11.0	1		4	4	4.0	14.0		150
6 - 7	208		15			7.7	4		5	7	5.9	19.9		236
5 - 8							3		3	9	4.0	15.4		247
4 - 9														
3 - 10														
2 - 11														
1 - 12														
PM HOURS														
12 - 1														
11 - 2														
10 - 3														
9 - 4														
8 - 5														
7 - 6														
6 - 7														
5 - 8														
4 - 9														
3 - 10														
2 - 11														
1 - 12														
AM TOTAL	665	3	52	10		8.1	13	19	13	25	5.6	16.7	7	807
PM TOTAL	665	3	52	10		8.1	13	19	13	25	5.6	16.7	7	807
DAY TOTAL	665	3	52	10		8.1	13	19	13	25	5.6	16.7	7	807

06-29-04 THRU 07-02-04

AVERAGE WEEKDAY CLASSIFICATION VOLUMES *****

CARS PICKUPS	BUS MED	HVY	4+	SINGLE UNIT %	DOUBLE UNITS	5-	TRAINS	7+	TRAIN %	TRUCK %	CLASS UNKNOWN	TOTAL VEHICLES
4774	16	370	60	7.9	64	176	64	5.4	1	2	130	5681
4671	20	361	55	7.90	64	178	64	5.49	1	3	126	5572
5681 X SEASONAL ADJ. FACTOR 0.9100 = ESTIMATED AVG DAILY TRAFFIC												
5572												
5170												
5071												

PEAK HOUR PERCENTAGES: K = 8.78 D = 50.10 T = 12.02
 PEAK HOUR LOCATION: VOLUME = 499 DATE: 07/01/04 TIME: 04:00 PM

Note: ONE DAY WB

0.8568