



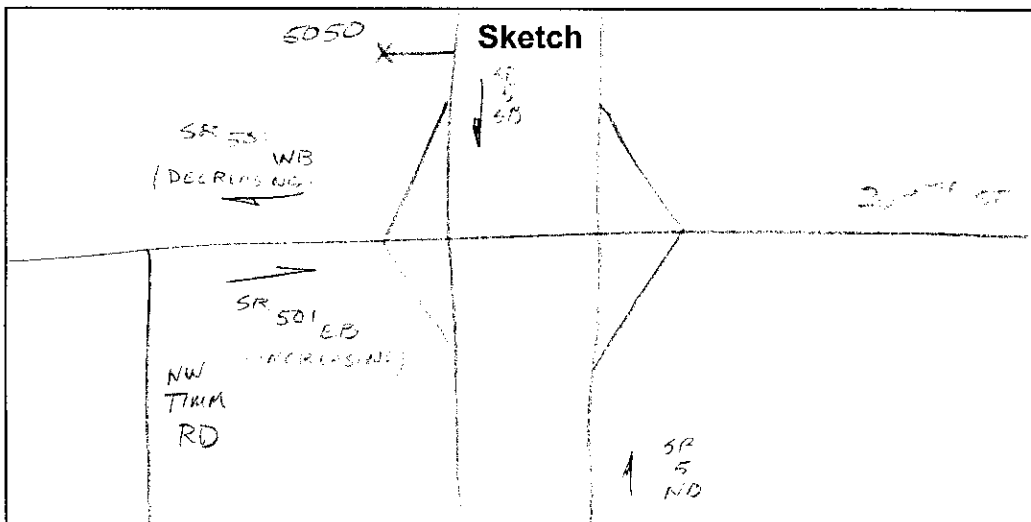
GK Traffic Counter

Interval 60 Min. 15 Min.
 2 Tube Classification
 Lane No. 1 2
 1 Channel Tube A+B
 2 Channel Tube A, B
 Direction Channel A _____
 Direction Channel B _____
 Module No. 13845

Counter No. 5050 Count ID HPMS
 SR 005 RRT _____ MP 14.55
 Leg 2 Direction SB OSID _____

Station Description - ON SR 5 N/O SR 501/269TH ST I/C RAMP

Date	Day	Time	Comments
4/23/3	2	1057	Manual A 42 B _____ SP=3 6.7 Counter A 39 B _____ SET OK W/P/AG
4/24	3	0907	Manual A 107 B 7 Counter A 105 B _____ check of counter
4/30	4	175	Manual A 70 B _____ 6.5 Counter A 70 B _____ check of counter
5/1	5	1014	Manual A 3 B _____ Counter A 3 B _____ check of counter
5/2	6	0754	Manual A 7 B _____ 2.7 Counter A 7 B _____ P/O of CG/AT



K. P. ... / P. ...
 Field Person



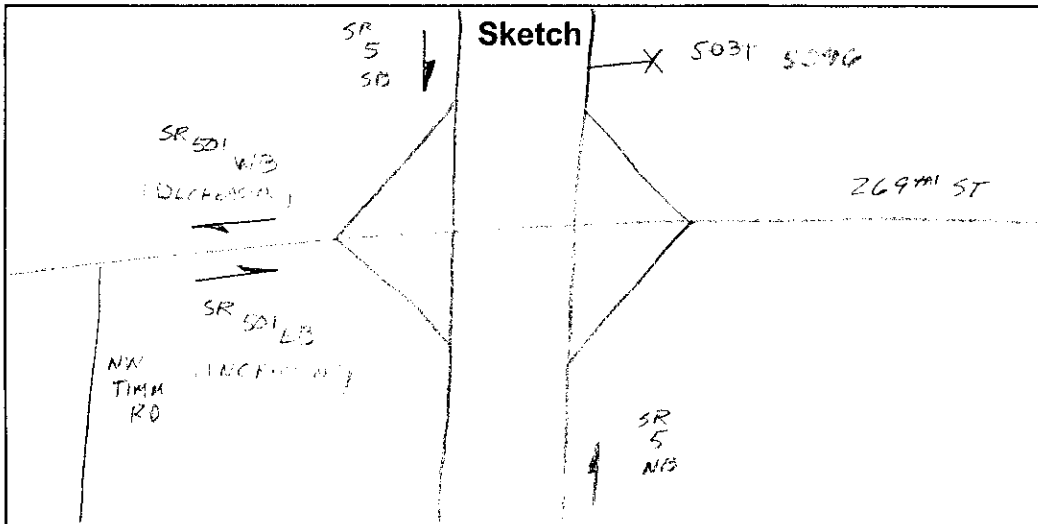
GK Traffic Counter

Interval 60 Min. 15 Min.
 2 Tube Classification
 Lane No. 1 2
 1 Channel Tube A+B
 2 Channel Tube A, B
 Direction Channel A _____
 Direction Channel B _____
 Module No. 15224 15038

Counter No. 5031 Count ID HPMS
 SR 005 RRT _____ MP 14.55
 Leg 2 Direction NB OSID _____

Station Description - ON SR 5 N/O SR 501 / 269TH ST I/C RAMP

Date	Day	Time	Comments
4/28/3	2	1041	Manual A 39 B Counter A 39 B 6.4 SET OK KP/CG
4/29	3	927	Manual A 40 B Counter A 40 B Pulled out / no data
4/30	4		Manual A 40 B Counter A 40 B OK - 21
5/1	5	100	Manual A 40 B Counter A 40 B OK - 21
5/2	6	0745	Manual A 40 B Counter A 40 B P/O OK CG/KP



K. Perkins / C. Good

SR 005 MP 014.55 OFF SYSTEM ID. LEG 2 DIRECTION OF TRAFFIC SOUTHBOUND LANE ALL OF
 COUNT IDENTIFIER HPMS COUNTER NUMBER 005050 DESCRIPTION: ON SR 5 N/O SR 501/NW 269TH ST 1/C

04/28/03 MONDAY

AM HOURS	PM HOURS	DAILY TOTAL
12	1	13
1	2	3
2	3	5
3	4	7
4	5	9
5	6	11
6	7	13
7	8	15
8	9	17
9	10	19
10	11	21
11	12	23
12	1	25
1	2	27
2	3	29
3	4	31
4	5	33
5	6	35
6	7	37
7	8	39
8	9	41
9	10	43
10	11	45
11	12	47
12	1	49
1	2	51
2	3	53
3	4	55
4	5	57
5	6	59
6	7	61
7	8	63
8	9	65
9	10	67
10	11	69
11	12	71
12	1	73
1	2	75
2	3	77
3	4	79
4	5	81
5	6	83
6	7	85
7	8	87
8	9	89
9	10	91
10	11	93
11	12	95
12	1	97
1	2	99
2	3	101
3	4	103
4	5	105
5	6	107
6	7	109
7	8	111
8	9	113
9	10	115
10	11	117
11	12	119
12	1	121
1	2	123
2	3	125
3	4	127
4	5	129
5	6	131
6	7	133
7	8	135
8	9	137
9	10	139
10	11	141
11	12	143
12	1	145
1	2	147
2	3	149
3	4	151
4	5	153
5	6	155
6	7	157
7	8	159
8	9	161
9	10	163
10	11	165
11	12	167
12	1	169
1	2	171
2	3	173
3	4	175
4	5	177
5	6	179
6	7	181
7	8	183
8	9	185
9	10	187
10	11	189
11	12	191
12	1	193
1	2	195
2	3	197
3	4	199
4	5	201
5	6	203
6	7	205
7	8	207
8	9	209
9	10	211
10	11	213
11	12	215
12	1	217
1	2	219
2	3	221
3	4	223
4	5	225
5	6	227
6	7	229
7	8	231
8	9	233
9	10	235
10	11	237
11	12	239
12	1	241
1	2	243
2	3	245
3	4	247
4	5	249
5	6	251
6	7	253
7	8	255
8	9	257
9	10	259
10	11	261
11	12	263
12	1	265
1	2	267
2	3	269
3	4	271
4	5	273
5	6	275
6	7	277
7	8	279
8	9	281
9	10	283
10	11	285
11	12	287
12	1	289
1	2	291
2	3	293
3	4	295
4	5	297
5	6	299
6	7	301
7	8	303
8	9	305
9	10	307
10	11	309
11	12	311
12	1	313
1	2	315
2	3	317
3	4	319
4	5	321
5	6	323
6	7	325
7	8	327
8	9	329
9	10	331
10	11	333
11	12	335
12	1	337
1	2	339
2	3	341
3	4	343
4	5	345
5	6	347
6	7	349
7	8	351
8	9	353
9	10	355
10	11	357
11	12	359
12	1	361
1	2	363
2	3	365
3	4	367
4	5	369
5	6	371
6	7	373
7	8	375
8	9	377
9	10	379
10	11	381
11	12	383
12	1	385
1	2	387
2	3	389
3	4	391
4	5	393
5	6	395
6	7	397
7	8	399
8	9	401
9	10	403
10	11	405
11	12	407
12	1	409
1	2	411
2	3	413
3	4	415
4	5	417
5	6	419
6	7	421
7	8	423
8	9	425
9	10	427
10	11	429
11	12	431
12	1	433
1	2	435
2	3	437
3	4	439
4	5	441
5	6	443
6	7	445
7	8	447
8	9	449
9	10	451
10	11	453
11	12	455
12	1	457
1	2	459
2	3	461
3	4	463
4	5	465
5	6	467
6	7	469
7	8	471
8	9	473
9	10	475
10	11	477
11	12	479
12	1	481
1	2	483
2	3	485
3	4	487
4	5	489
5	6	491
6	7	493
7	8	495
8	9	497
9	10	499
10	11	501
11	12	503
12	1	505
1	2	507
2	3	509
3	4	511
4	5	513
5	6	515
6	7	517
7	8	519
8	9	521
9	10	523
10	11	525
11	12	527
12	1	529
1	2	531
2	3	533
3	4	535
4	5	537
5	6	539
6	7	541
7	8	543
8	9	545
9	10	547
10	11	549
11	12	551
12	1	553
1	2	555
2	3	557
3	4	559
4	5	561
5	6	563
6	7	565
7	8	567
8	9	569
9	10	571
10	11	573
11	12	575
12	1	577
1	2	579
2	3	581
3	4	583
4	5	585
5	6	587
6	7	589
7	8	591
8	9	593
9	10	595
10	11	597
11	12	599
12	1	601
1	2	603
2	3	605
3	4	607
4	5	609
5	6	611
6	7	613
7	8	615
8	9	617
9	10	619
10	11	621
11	12	623
12	1	625
1	2	627
2	3	629
3	4	631
4	5	633
5	6	635
6	7	637
7	8	639
8	9	641
9	10	643
10	11	645
11	12	647
12	1	649
1	2	651
2	3	653
3	4	655
4	5	657
5	6	659
6	7	661
7	8	663
8	9	665
9	10	667
10	11	669
11	12	671
12	1	673
1	2	675
2	3	677
3	4	679
4	5	681
5	6	683
6	7	685
7	8	687
8	9	689
9	10	691
10	11	693
11	12	695
12	1	697
1	2	699
2	3	701
3	4	703
4	5	705
5	6	707
6	7	709
7	8	711
8	9	713
9	10	715
10	11	717
11	12	719
12	1	721
1	2	723
2	3	725
3	4	727
4	5	729
5	6	731
6	7	733
7	8	735
8	9	737
9	10	739
10	11	741
11	12	743
12	1	745
1	2	747
2	3	749
3	4	751
4	5	753
5	6	755
6	7	757
7	8	759
8	9	761
9	10	763
10	11	765
11	12	767
12	1	769
1	2	771
2	3	773
3	4	775
4	5	777
5	6	779
6	7	781
7	8	783
8	9	785
9	10	787
10	11	789
11	12	791
12	1	793
1	2	795
2	3	797
3	4	799
4	5	801
5	6	803
6	7	805
7	8	807
8	9	809
9	10	811
10	11	813
11	12	815
12	1	817
1	2	819
2	3	821
3	4	823
4	5	825
5	6	827
6	7	829
7	8	831
8	9	833
9	10	835
10	11	837
11	12	839
12	1	841
1	2	843
2	3	845
3	4	847
4	5	849
5	6	851
6	7	853
7	8	855
8	9	857
9	10	859
10	11	861
11	12	863
12	1	865
1	2	867
2	3	869
3	4	871
4	5	873
5	6	875
6	7	877
7	8	879
8	9	881
9	10	883
10	11	885
11	12	887
12	1	889
1	2	891
2	3	893
3	4	895
4	5	897
5	6	899
6	7	901
7	8	903
8	9	905
9	10	907
10	11	909
11	12	911
12	1	913
1	2	915
2	3	917
3	4	919
4	5	921
5	6	923
6	7	925
7	8	927
8	9	929
9	10	931
10	11	933
11	12	935
12	1	937
1	2	939
2	3	941
3	4	943
4	5	945
5	6	947
6	7	949
7	8	951

STATE OF WASHINGTON - DEPARTMENT OF TRANSPORTATION
TRIP SYSTEM
15 MINUTE TRAFFIC COUNT SUMMARY

SR 005 MP 014.55 OFF SYSTEM ID. LEG 2 DIRECTION OF TRAFFIC NORTHBOUND LANE ALL OF

COUNT IDENTIFIER HPMS COUNTER NUMBER 005031 DESCRIPTION: ON SR 5 N/O SR 501/NW 269TH ST 1/C

04/28/03 MONDAY	AM HOURS												PM HOURS												DAILY TOTAL				
	1	2	3	4	5	6	7	8	9	10	11	12	1	2	3	4	5	6	7	8	9	10	11	12					
12	1	2	3	4	5	6	7	8	9	10	11	12	1	2	3	4	5	6	7	8	9	10	11	12	20424				
TOT	545	569	615	549	498	548	504	462	327	230	206	137	93	95	545	2325	2263	2277	1805	2190	2154	2013	1498	1020	814	683	458	379	2870
	AM PEAK HOUR 1100 TO 1200 VOLUME 2325												AM PEAK HOUR 1245 TO 0145 VOLUME 2343																

04/29/03 TUESDAY	AM HOURS												PM HOURS												DAILY TOTAL
	1	2	3	4	5	6	7	8	9	10	11	12	1	2	3	4	5	6	7	8	9	10	11	12	
12	1	2	3	4	5	6	7	8	9	10	11	12	1	2	3	4	5	6	7	8	9	10	11	12	33412
TOT	273	288	244	253	357	619	943	1263	929	1968	2058	2062	2128	2171	2285	2466	2680	2562	2036	1579	1367	1165	1002	714	11257
	AM PEAK HOUR 1045 TO 1145 VOLUME 2114												AM PEAK HOUR 0345 TO 0445 VOLUME 2718												

04/30/03 WEDNESDAY	AM HOURS												PM HOURS												DAILY TOTAL
	1	2	3	4	5	6	7	8	9	10	11	12	1	2	3	4	5	6	7	8	9	10	11	12	
12	1	2	3	4	5	6	7	8	9	10	11	12	1	2	3	4	5	6	7	8	9	10	11	12	39787
TOT	567	515	474	485	666	1011	1638	2151	1912	2180	2276	2206	2184	2345	2457	2706	2819	2623	2300	1817	1436	1315	951	753	16081
	AM PEAK HOUR 0930 TO 1030 VOLUME 2294												AM PEAK HOUR 0345 TO 0445 VOLUME 2947												

SR 005 MP 014.55 OFF SYSTEM ID. LEG 2 DIRECTION OF TRAFFIC NORTHBOUND LANE ALL OF

COUNT IDENTIFIER HPMS COUNTER NUMBER 005096 * DESCRIPTION: ON SR 5 N/O SR 501/NW 269TH ST 1/C

05/01/03	THURSDAY	AM HOURS												PM HOURS	DAILY TOTAL										
		1	2	3	4	5	6	7	8	9	10	11	12												
00-15	162	119	107	138	127	182	323	442	520	516	560	589	524	595	651	634	715	659	661	529	385	349	328	201	
15-30	176	118	139	124	193	239	383	503	499	599	566	619	545	559	635	667	699	706	583	520	352	291	307	200	
30-45	203	113	156	141	151	293	433	565	534	564	652	598	594	583	632	659	742	737	551	439	375	276	221		
45-00	127	94	154	136	171	352	488	614	596	570	533	591	643	616	674	726	691	621	528	451	364	341	196	156	
TOT	668	444	556	539	642	1066	1627	2124	2149	2249	2311	2397	2306	2353	2592	2686	2847	2723	2323	1939	1476	1374	1107	778	41276

AM PEAK HOUR 1100 TO 1200 VOLUME 2397
 PM PEAK HOUR 0345 TO 0445 VOLUME 2882
 AM TOTAL 16772
 PM TOTAL 24504

05/02/03	FRIDAY	AM HOURS												PM HOURS	DAILY TOTAL										
		1	2	3	4	5	6	7	8	9	10	11	12												
00-15	154	131	122	122	144	219	338	461																	
15-30	148	121	138	115	174	241	390	529																	
30-45	154	168	139	116	200	343	465	561																	
45-00	134	120	146	149	208	304	430																		
TOT	590	540	545	502	726	1107	1623	1551																	

AM PEAK HOUR 0645 TO 0745 VOLUME 1981
 PM PEAK HOUR 0000 TO 0000 VOLUME 0
 AM TOTAL 7184
 PM TOTAL 0

04/28/03 THRU 05/02/03 TOTAL HOURS FOR COUNT 90
 2 DAYS
 AVG WEEKDAY VOL 40532 X SEASONAL ADJ. FACTOR 1.0900 = 44180 X AXLE CORR FACTOR 0.7763 = ESTIMATED AVG DAILY TRAFFIC 34297
 FACTOR GROUP R045
 FACTOR GROUP R045

7184

STATE OF WASHINGTON - DEPARTMENT OF TRANSPORTATION
TRIP SYSTEM
15 MINUTE TRAFFIC COUNT SUMMARY

SR 005 MP 014.55 OFF SYSTEM ID. LEG 2 DIRECTION OF TRAFFIC BOTH WAYS LANE ALL OF

COUNT IDENTIFIER HPMS COUNTER NUMBER 005096 * DESCRIPTION: ON SR 5 N/O SR 501/NW 269TH ST I/C

05/01/03 THURSDAY	AM HOURS												PM HOURS												DAILY TOTAL
	1	2	3	4	5	6	7	8	9	10	11	12	1	2	3	4	5	6	7	8	9	10	11	12	
12	1	2	3	4	5	6	7	8	9	10	11	12	1	2	3	4	5	6	7	8	9	10	11	12	14880
1	2	3	4	5	6	7	8	9	10	11	12	1	2	3	4	5	6	7	8	9	10	11	12	14880	
343	252	217	261	306	420	842	968	1162	1079	1079	1162	1141	1230	1322	1364	1431	1415	1218	999	728	670	620	428		
311	225	257	275	369	494	948	1184	1071	1121	1120	1182	1299	1316	1391	1358	1114	956	666	607	428	625	607	428		
30-45	344	219	265	344	683	1003	1218	1135	1179	1231	1257	1269	1331	1267	1446	1340	982	816	711	739	495	370			
45-00	298	176	249	285	369	770	1070	1172	1170	1118	1213	1236	1258	1303	1454	1361	1196	1055	794	710	657	399	358		
TOT	1296	872	988	1078	1388	2367	3863	4540	4549	4548	4801	4833	4939	5255	5401	5629	5309	4369	3565	2815	2691	2121	1584		
								AM PEAK HOUR 0715 TO 0815 VOLUME 4810													AM TOTAL 34906				
								PM PEAK HOUR 0345 TO 0445 VOLUME 5722													PM TOTAL 48511				

05/02/03 FRIDAY	AM HOURS												PM HOURS												DAILY TOTAL
	1	2	3	4	5	6	7	8	9	10	11	12	1	2	3	4	5	6	7	8	9	10	11	12	
12	1	2	3	4	5	6	7	8	9	10	11	12	1	2	3	4	5	6	7	8	9	10	11	12	14880
1	2	3	4	5	6	7	8	9	10	11	12	1	2	3	4	5	6	7	8	9	10	11	12	14880	
322	248	222	240	282	438	820	963	1071	1121	1120	1182	1299	1316	1391	1358	1114	956	666	607	428	625	607	428		
15-30	304	253	249	224	320	530	878	1097	1121	1120	1182	1299	1316	1391	1358	1114	956	666	607	428	625	607	428		
30-45	309	284	248	245	367	711	1064	1132	1121	1120	1182	1299	1316	1391	1358	1114	956	666	607	428	625	607	428		
45-00	270	208	285	278	367	692	1030	1172	1170	1118	1213	1236	1258	1303	1454	1361	1196	1055	794	710	657	399	358		
TOT	1205	993	1004	987	1336	2371	3792	3192	4540	4549	4548	4801	4833	4939	5255	5401	5629	5309	4369	3565	2815	2691	2121		
								AM PEAK HOUR 0645 TO 0745 VOLUME 4222													AM TOTAL 14880				
								PM PEAK HOUR 0000 TO 0000 VOLUME 0													PM TOTAL 0				

04/28/03 THRU 05/02/03
TOTAL HOURS FOR COUNT 90

2 DAYS
AVG WEEKDAY VOL 82011 X SEASONAL ADJ. FACTOR 1.0900 = 89392 X AXLE CORR FACTOR 0.7763 = ESTIMATED AVG DAILY TRAFFIC 69395
PEAK HOUR PERCENTAGES: K = 6.98 D = 50.37
PEAK HOUR LOCATION : VOLUME = 5722 DATE: 05/01/03 TIME: 03:45 PM