

Southwest Washington Regional Transportation Council

**Unified Planning Work Program
for
Fiscal Year 2023**

July 1, 2022 to June 30, 2023

ADOPTED: May 3, 2022

AMENDED: June 7, 2022

Administrative Adjustment: July 11, 2022

Southwest Washington Regional Transportation Council
1300 Franklin Street
Vancouver WA 98660

Telephone: 564-397-6067
Fax: 564-397-6132
Relay Service: #711 or (800) 833-6388

RTC's Website: <http://www.rtc.wa.gov>



Southwest Washington Regional Transportation Council

**Unified Planning Work Program
for
Fiscal Year 2023**

July 1, 2022 to June 30, 2023

ADOPTED: May 3, 2022

AMENDED: June 7, 2022

Administrative Adjustment: July 11, 2022

This Unified Planning Work Program has been financed in part through grants from the Federal Highway Administration, Federal Transit Administration, and the Washington State Department of Transportation.

The views expressed in this Program do not necessarily represent the views of these agencies.

**Southwest Washington Regional Transportation Council
1300 Franklin Street
Vancouver WA 98660**

Telephone: 564-397-6067

Fax: 564-397-6132

Relay Service: #711 or (800) 833-6388

RTC's Website: <http://www.rtc.wa.gov>

Preparation of this document was funded by grants from the Washington State Department of Transportation, U.S. Department of Transportation (Federal Highways Administration and Federal Transit Administration) and local funds from RTC member jurisdictions.

Title VI Compliance

The Southwest Washington Regional Transportation Council (RTC) assures that no person shall, on the grounds of race, color, national origin, or sex as provided by Title VI of the Civil Rights Act of 1964 and the Civil Rights Restoration Act of 1987 (P.L. 100.259), be excluded from participation in, be denied the benefits of, or be otherwise subjected to discrimination under any program or activity. RTC further assures that every effort will be made to ensure nondiscrimination in all of its programs and activities, whether or not those programs and activities are federally funded.

Americans with Disabilities Act (ADA) Information:

Materials can be provided in alternative formats by contacting
Southwest Washington Regional Transportation Council (RTC)


Phone: 564 397-6067 or e-mail: info@rtc.wa.gov

Relay Service: #711 or (800) 833-6388





RESOLUTION 05-22-13

TO: Southwest Washington Regional Transportation Council Board of Directors
FROM: Matt Ransom, Executive Director 
DATE: April 26, 2022
SUBJECT: **FY2023 Unified Planning Work Program**

AT A GLANCE - ACTION

To adopt RTC's Fiscal Year 2023 Unified Planning Work Program (UPWP).

INTRODUCTION

The Unified Planning Work Program (UPWP) is prepared annually and documents the transportation planning activities to be carried out by RTC as the Metropolitan Planning Organization (MPO) for Clark County (within the Portland-Vancouver metropolitan area). Transportation planning activities are performed in response to the requirements of all MPOs outlined in federal regulations; United States Code (USC) Titles 23 and 49. RTC's Fiscal Year 2023 UPWP covers a one year period from July 1, 2022 to June 30, 2023. The UPWP is consistent with RTC's calendar year 2022 Work Plan and Budget adopted by the RTC Board of Directors in December 2021 (RTC Board Resolution 12-21-31). In addition to describing upcoming and potential transportation planning activities, the UPWP also details the assignment of RTC grant and other funding resources for implementation of the transportation planning program.

The FY 2023 UPWP document outlines regional transportation planning activities focused in four major sections: (1) Regional Transportation Planning Program, (2) Data Management, Travel Forecasting, Air Quality, and Technical Services, (3) Regional Transportation Program Coordination and Management, and (4) Transportation Planning Activities of State and Local Agencies.

To comply with the federal transportation act [Metropolitan Planning Rule § 450.308(c)], the MPO develops the UPWP in cooperation with transportation planning partners to address the transportation planning priorities facing the region. The UPWP identifies work proposed for the next 1- or 2-year period by major activity and task in sufficient detail to indicate who will perform the work, the schedule for completing the work, the resulting products, the proposed funding by activity/task, and a summary of the total amounts and sources of federal and matching funds. RTC's UPWP outlines funding sources available for the transportation planning program to address the major transportation planning issues of the upcoming year (see UPWP, page xiii). A Revenue Summary table is provided on page 47 of the document.

POLICY IMPLICATION

The UPWP is expected to set in place a program to implement federal, state, and local transportation planning emphasis areas (PEAs). The Federal Highway Administration, the Federal Transit Administration, and Washington State Department of Transportation annually identify transportation PEAs to be addressed in the metropolitan and statewide transportation planning processes. The PEAs are outlined on pages xi through xiii of RTC's FY 2023 UPWP. Federal emphasis areas for FY 2023 were updated significantly from prior years as outlined in a December 30, 2021 FHWA/FTA letter. In addition to continuing emphasis on the performance-based planning requirements, the updated PEAs include a number of new, as well as continuing, issues that will need to be addressed in the MPO's work program including:

- Tackling the Climate Crisis – Transition to a Clean Energy Resilient Future
- Equity and Justice 40 in Transportation Planning
- Complete Streets
- Public Involvement
- Strategic Highway System: (STRAHNET)/US Department of Defense Coordination
- Federal Land Management Agency (FLMA) Coordination
- Planning and Environmental Linkages (PEL)
- Data in Transportation Planning

The state emphasizes the need for MPO/RTPOs to collaborate with WSDOT on development of statewide transportation plans.

Carrying out a metropolitan transportation planning program that meets the requirements of 23 CFR 450.308 and 23 CFR 420.111; 49 USC § 5303, 49 USC § 5305 and FTA Circular 8100.1C will continue with adoption of RTC's FY 2023 UPWP. This includes addressing the federal transportation planning factors outlined on page xi of RTC's FY 2023 UPWP.

Stakeholder Review

The Regional Transportation Advisory Committee (RTAC) helps to develop the UPWP and has opportunity to review drafts throughout the development process. The RTC Board of Directors had the opportunity to review the draft document at its April 5, 2022 meeting.

The Portland-Vancouver metropolitan area is served by two MPOs; RTC serves the Washington portion of the region and Metro serves the Oregon portion. In a bi-state region, the MPOs must cooperate and coordinate development of their respective UPWPs. Metro's draft FY 2022-2023 UPWP is made available for RTC Board's review as part of Metro's April 21 Joint Policy Advisory Committee on Transportation (JPACT) meeting packet.

RTC and Metro staff participated in the Federal and State UPWP review meetings held at both MPOs; on March 7 at Metro and March 10 at RTC. Public notice of the draft FY 2023 UPWP has been published on the RTC's website.

The RTC's Regional Transportation Advisory Committee (RTAC) reviewed the proposed FY 2023 UPWP at its April 15 meeting and recommended RTC Board of Directors adoption.

BUDGET IMPLICATION

The FY 2023 UPWP budget is consistent with and extends from RTC's 2022 Work Plan and Budget adopted by the RTC Board of Directors in December 2021. Federal, state, special study contract, and member assessment revenue sources assumed in the FY 2023 UPWP have been committed by agreement, authorized for future assessment, or are planned to be committed in the coming months. A Revenue Summary table is presented on page 47 of the FY 2023 UPWP document. Should the assumed funding allocations change significantly during the FY 2023 UPWP, the Work Program will be amended accordingly.

ASSOCIATE ACTIONS

Adoption of the FY 2023 Unified Planning Work Program authorizes the Executive Director to file applications for regional transportation funding, to execute grant agreements, and to file any assurances or required documentation relating to implementation of the FY 2023 UPWP.


ACTION REQUESTED

Adoption of Resolution 05-22-13 to approve the Unified Planning Work Program for Fiscal Year 2023.

ADOPTED this 3rd day of May 2022, by the Southwest Washington Regional Transportation Council.

SOUTHWEST WASHINGTON
REGIONAL TRANSPORTATION COUNCIL

ATTEST:

DocuSigned by:

3B9C70408E5642A...

Shawn Donaghy Gary Medvigy
Chair of the Board

DocuSigned by:

1093CF97B0334F4...

Matt Ransom
Executive Director

Attachments:

- RTC's FY 2023 UPWP
- Metro's Draft FY 2022-2023 UPWP available for review as part of the April 21, 2022 JPACT meeting packet

FY 2023 UPWP for Clark County: Contents

FISCAL YEAR 2023 UPWP: INTRODUCTION	i
UPWP Purpose.....	i
UPWP Objectives	i
UPWP Amendments	i
Southwest Washington Regional Transportation Council (RTC): MPO/RTPO.....	i
Participants, Coordination and Funding Sources.....	iv
Planning Emphasis Areas.....	xi
The Region’s Key Transportation Issues:	xiii
Unfunded Planning Activities.....	xv
1. Regional Transportation Planning Program	1
1A. Regional Transportation Plan.....	1
1B. Transportation Improvement Program	7
1C. Congestion Management Process.....	9
IC.(i) FY 2023 Funding: Congestion Management Process	11
IC.(ii) FY 2023 Funding: Transportation Data Study (and Data Acquisition)	11
1D. Vancouver Area Smart Trek Program	12
1E. Skamania and Klickitat RTPO	17
1F. Human Services Transportation Plan Update.....	19
1G. Interstate Bridge Replacement Project: technical support	21
2. Data Management, Travel Forecasting, and Technical Services	24
2A. Data Management, Travel Forecasting, and Technical Services.....	24
2B. Household Travel Survey	30
3. Transportation Program Coordination and Management	32
3A. Transportation Coordination and Management	32
4. Transportation Planning Activities of State and Local Agencies	37
FY 2023 Summary of Expenditures and Revenues: RTC	47
Consultant Assistance on RTC’S FY 2023 Work Elements	48
FY 2023 Expenditures and Revenues by Fund Type	49

This Unified Planning Work Program has been financed in part through grants from the Federal Highway Administration, Federal Transit Administration, and the Washington State Department of Transportation. The views expressed in this Program do not necessarily represent the views of these agencies

FISCAL YEAR 2023 UPWP: INTRODUCTION

UPWP PURPOSE

The Unified Planning Work Program is prepared annually by the Southwest Washington Regional Transportation Council (RTC). The financial year 2023 (FY 2023) UPWP runs from July 1, 2022 through June 30, 2023. RTC's UPWP is developed in coordination with Washington State Department of Transportation, C-TRAN and local jurisdictions. As part of the continuing transportation planning process, all regional transportation planning activities proposed by the MPO/RTPO, Washington State Department of Transportation and local agencies are documented in the UPWP.

The UPWP focuses on transportation tasks that are priorities for federal and state transportation agencies as well as local jurisdictions. The planning activities relate to multiple modes of transportation and address planning issues significant to the Regional Transportation Plan (RTP) for the Clark County urban region and the Regional Transportation Plans for the rural counties of Skamania and Klickitat. The Infrastructure and Investment Jobs Act, also known as The Bipartisan Infrastructure Bill (BIL), was signed into law by President Biden on November 15, 2021; it is this federal transportation act that sets the policy and programmatic framework for transportation investments building on the FAST Act (2015). The BIL is a once-in-a-generation investment in infrastructure that will help grow the economy, enhance U.S. competitiveness, create good jobs, and build a safe, resilient, and equitable transportation future. The BIL builds on the program structure and reforms of the prior federal Transportation Act, the FAST Act.

UPWP OBJECTIVES

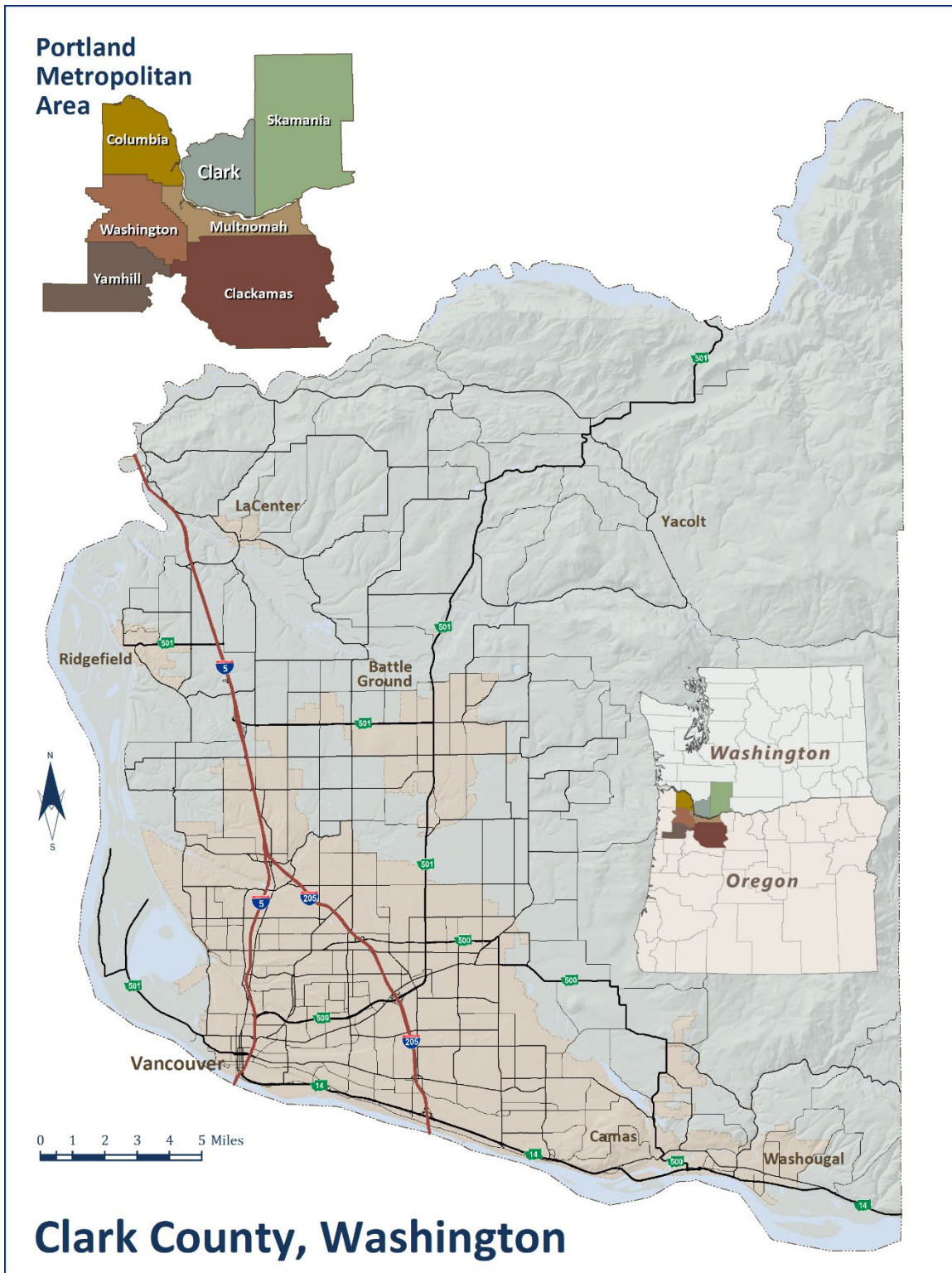
The Work Program describes regional transportation planning issues and projects to be addressed during the next fiscal year. Throughout the year, the UPWP serves as the guide for planners, citizens, and elected officials to track transportation planning activities. It also provides local and state agencies in the Portland/Vancouver and RTPO region with a useful basis for coordination.

UPWP AMENDMENTS

If necessary, the Work Program is kept current during the course of the fiscal year by UPWP amendments carried through an RTC Board resolution adoption process.

SOUTHWEST WASHINGTON REGIONAL TRANSPORTATION COUNCIL (RTC): MPO/RTPO

RTC is the Metropolitan Planning Organization (MPO) for the Clark County, Washington portion of the larger Portland/Vancouver urbanized area (See Figure 1, map). An MPO is the legally mandated forum for cooperative transportation decision-making in a metropolitan planning area. RTC's Metropolitan Planning Area (MPA) boundary is countywide. RTC was established in 1992 to carry out the regional transportation planning program.



Clark County, Washington

Figure 1: RTC, Metropolitan Planning Organization (MPO)
The Metropolitan Planning Area (MPA)/MPO region includes the whole of Clark County



**Figure 2: Southwest Washington Regional Transportation Council (RTC):
Extent of Regional Transportation Planning Organization (Clark, Skamania and Klickitat counties).**

Following passage of the Intermodal Surface Transportation Efficiency Act (ISTEA) in 1991, the region became a federally-designated Transportation Management Area (TMA) because it has a population of over 200,000. TMA status brings additional transportation planning requirements that the MPO must carry out. The MPO's and UPWP requirements are specified in 23 CFR 450.308, 23 CFR 420.111, 49 USC §5303, 49 USC §5305 and FTA Circular 8100.1C.

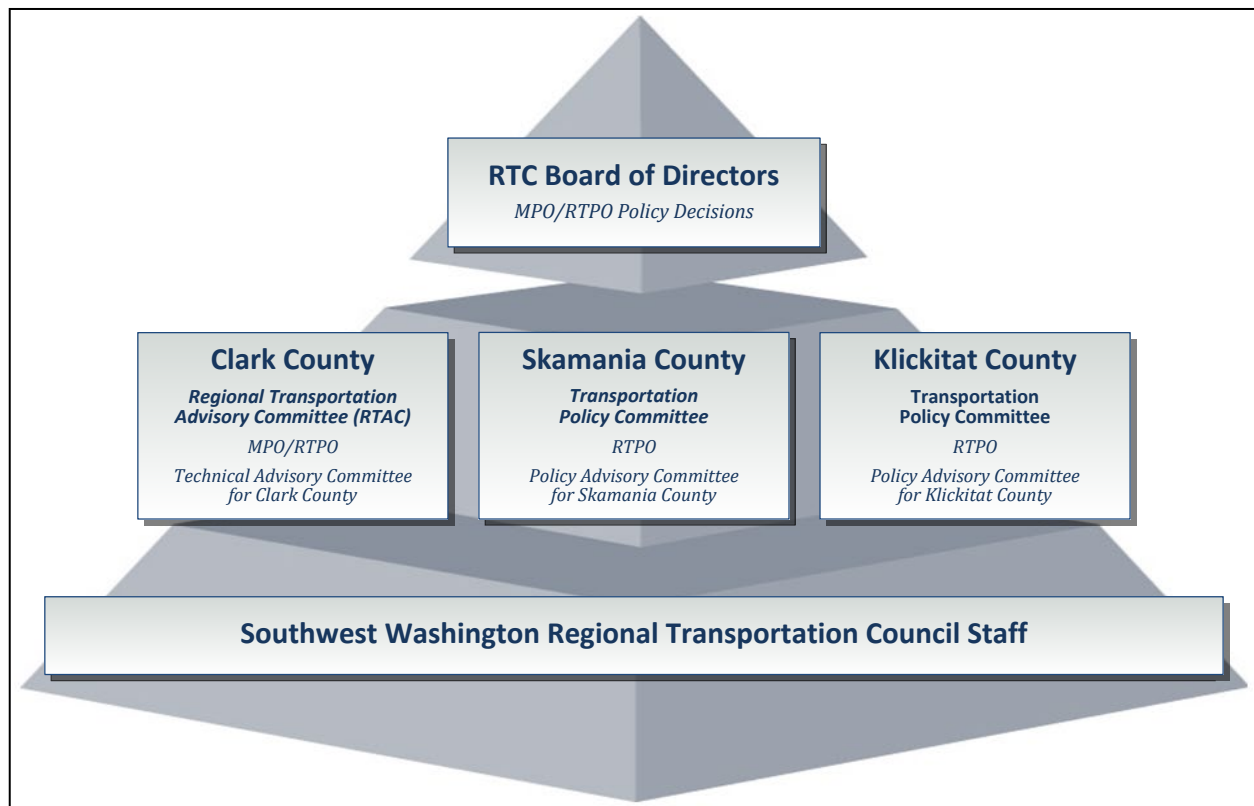
RTC is also the Washington State-designated Regional Transportation Planning Organization (RTPO) for the three-county area of Clark, Skamania and Klickitat (Figure 2, map). RTPO requirements are specified in RCW47.80.010 through RCW47.80.070 and WAC 468-86.

RTC's three-county population of Clark, Klickitat and Skamania is estimated to be 547,850 in 2021 with Clark County having the largest population of 513,100. Clark and Skamania counties are part of the larger Portland – Vancouver – Hillsboro OR-WA metropolitan area. The Metropolitan Statistical area defined by the U.S. Census Bureau includes seven counties, Clackamas, Columbia, Multnomah, Washington, and Yamhill Counties in Oregon, and Clark and Skamania Counties in Washington with an estimated 2020 population of 2,512,427.

PARTICIPANTS, COORDINATION AND FUNDING SOURCES

The Regional Transportation Council (RTC) Board of Directors is the policy decision-making body for RTC, both as MPO and RTPO. Within the Clark County MPO region, the Regional Transportation Advisory Committee (RTAC) advises the RTC Board on technical transportation issues. Consistent with the 1990 State Growth Management Act, Transportation Policy Committees for Skamania and Klickitat Counties provide policy advice for the two rural counties. Membership of RTC, the RTC Board, the Regional Transportation Advisory Committee (RTAC), Skamania County Transportation Policy Committee and Klickitat Transportation Policy Committee are listed on pages vi through ix.

Figure 3: RTC’s Agency Structure



A. Clark County

The primary transportation planning participants in Clark County include the following: the Southwest Washington Regional Transportation Council (RTC), C-TRAN, Washington State Department of Transportation (WSDOT), Clark County, the cities of Vancouver, Camas, Washougal, Ridgefield, Battle Ground and La Center and the town of Yacolt, the ports of Vancouver, Camas-Washougal, and Ridgefield, the Cowlitz Indian Tribe, the Federal Highway Administration (FHWA) and the Federal Transit Administration (FTA). In addition, the state Department of Ecology (DOE) is involved in the transportation program as it relates to air quality and, in particular, the State Implementation Plan (SIP) for carbon monoxide and ozone. The Human Services Council for the region coordinates with RTC on human services transportation issues. As the designated MPO for the Clark County region, RTC annually develops the transportation planning work program and

endorses the work program for the entire metropolitan area that includes the Metro Portland region. RTC is also responsible for the development of the Regional Transportation Plan, the metropolitan Transportation Improvement Program, the Congestion Management Process and other regional transportation studies.

C-TRAN regularly adopts a Transit Development Plan (TDP) that provides a comprehensive guide to C-TRAN's shorter-term development. The TDP provides information regarding capital and operating improvements over the next six years. The TDP, required by RCW 35.58.2795, outlines those projects of regional significance for inclusion in the Transportation Improvement Program within the region. C-TRAN adopted a longer-range transportation plan, C-TRAN 2030, in June 2010 to guide the future development of the transit system and adopted a Plan update in December 2016. Following a June 1, 2005 decision, C-TRAN's service boundary is limited to the city of Vancouver and its urban growth boundary, and the city limits only of Battle Ground, Camas, La Center, Ridgefield, Washougal, and the Town of Yacolt. In September 2005, voters approved an additional 0.2 percent sales tax for C-TRAN, avoiding significant service reductions, preserving existing service, and restoring service to outlying cities. C-TRAN operates a fixed route bus system on urban and suburban routes, The Vine Bus Rapid Transit route as well as express commuter bus service to Portland, Oregon. C-TRAN also operates The Current, a new on-demand door-to-door rideshare service, and Americans with Disabilities Act (ADA)-compliant paratransit service.

The Washington State Transportation Commission has responsibility for updating Washington's Transportation Plan; the long-range transportation policy plan for the state of Washington. WSDOT prepares statewide multimodal plans. RTC coordinates with the Transportation Commission and WSDOT to ensure that transportation needs identified in regional and local planning studies are incorporated into statewide plans. RTC also cooperates with WSDOT and local jurisdictions in involving the public in developing transportation policies, plans and programs. WSDOT, the Clark County Public Works Department and City of Vancouver Public Works Department conduct project planning for the highway and street systems in their respective jurisdictions. Coordination of transportation planning activities includes local and state officials in both Oregon and Washington states. Bi-State Coordination is described on page ix.

Agreements

RTC's governing documents are described on the agency's website. Mechanisms for local, regional and state coordination are described in Memorandum of Agreement (MOA) and Memorandum of Understanding (MOU). These memoranda are intended to assist and complement the transportation planning process by addressing:

- The organizational and procedural arrangement for coordinating activities such as procedures for joint reviews of projected activities and policies, information exchange, etc.
- Cooperative arrangements for sharing planning resources (funds, personnel, facilities, and services).
- Agreed upon base data, statistics, and projections (social, economic, demographic) as the basis on which planning in the area will proceed.

In FY 2015, the RTC Board authorized the Executive Director to enter into a Metropolitan Planning Agreement with the Washington State Department of Transportation (WSDOT) and the Clark County Public Transit Benefit Authority (C-TRAN) to fulfill the requirements of federal code 23 USC Part 450.314. RTC’s Metropolitan Planning Agreement, the so-called ‘314 agreement’, was originally signed on November 6, 2014 and the Agreement was updated in 2019 with all participants signing the update by December 5, 2019. The 314 Agreement documents coordination and consultation processes and expectations among RTC, WSDOT, and C-TRAN to carry out respective federal transportation planning requirements. The MPA reflects updated federal metropolitan transportation planning procedures and requirements, applicable federal laws and administrative procedures. A Memoranda of Understanding (MOU) between RTC and Southwest Washington Air Pollution Control Authority (SWAPCA), renamed the Southwest Clean Air Agency (SWCAA), is also in place. The RTC/SWCAA MOU was adopted on January 4, 1995 (Resolutions 01-95-02).

An MOU between RTC and Metro was first adopted by the RTC Board on April 7, 1998 (RTC Board Resolution 04-98-08). The Metro/RTC MOU was last reviewed in 2021 and adopted by RTC in July 2021 (RTC Board Resolution 07-21-21, July 6, 2021). The Metro/RTC MOU is currently reviewed triennially with adoption of the UPWP and is due for update in 2024.

SOUTHWEST WASHINGTON REGIONAL TRANSPORTATION COUNCIL: MEMBERSHIP 2022

Clark County	Port of Vancouver
Skamania County	Port of Camas/Washougal
Klickitat County	Port of Ridgefield
City of Vancouver	Port of Skamania County
City of Washougal	Port of Klickitat
City of Camas	Portland Metro
City of Battle Ground	Oregon Department of Transportation
City of Ridgefield	The Cowlitz Indian Tribe
City of La Center	<i>Legislators from the following Washington State Districts:</i>
Town of Yacolt	14th District
City of Stevenson	17th District
City of North Bonneville	18th District
City of White Salmon	20th District
City of Bingen	49 th District
City of Goldendale	
C-TRAN	
Washington State Department of Transportation	

SOUTHWEST WASHINGTON REGIONAL TRANSPORTATION COUNCIL: BOARD OF DIRECTORS

RTC Board of Directors 2022

Jurisdiction/Agency	Represented By:
City of Vancouver	Mayor Anne McEnery-Ogle Council Member Erik Paulson
Clark County	Council Chair Karen Dill Bowerman Councilor Temple Lentz Councilor Gary Medvigy (RTC Vice-Chair)
Small Cities East: City of Camas City of Washougal	Council Member Leslie Lewallen, Camas
Small Cities North: City of Battleground City of Ridgefield City of La Center Town of Yacolt	Council Member Adrian Cortes, (Battle Ground)
Skamania County: Skamania County City of North Bonneville City of Stevenson Port of Skamania County	Commissioner Tom Lannen, Skamania County
Klickitat County: Klickitat County City of Bingen City of Goldendale City of White Salmon Port of Klickitat	Commissioner David Sauter, Port of Klickitat
C-TRAN	Shawn Donaghy, CEO (RTC Chair)
WSDOT	Carley Francis, Southwest Regional Administrator
Ports: Port of Vancouver Port of Camas-Washougal Port of Ridgefield	Commissioner Larry Keister, Port of Camas-Washougal
Cowlitz Indian Tribe	Tribal Chairman Dave Barnett
ODOT	Rian Windsheimer, Region One Manager
Metro	Councilor Shirley Craddick, Metro
Ex-officio, non-voting RTC Board Members:	
14 th District	Senator Curtis King Representative Chris Corry Representative Gina Mosbrucker

RTC Board of Directors 2022

Jurisdiction/Agency	Represented By:
17 th District	Senator Lynda Wilson Representative Paul Harris Representative Vicki Kraft
18 th District	Senator Ann Rivers Representative Larry Hoff Representative Brandon Vick
20 th District	Senator John Braun Representative Peter Abbarno Representative Ed Orcutt
49 th District	Senator Annette Cleveland Representative Monica Jurado Stonier Representative Sharon Wylie

Regional Transportation Advisory Committee (RTAC) Members

Jurisdiction/Agency	Represented By:
Regional Transportation Council	Matt Ransom [Chair]
Clark County, Planning	Gary Albrecht
Clark County, Public Works	Susan Wilson
City of Vancouver, Public Works	Chris Malone
City of Vancouver, Planning	Jennifer Campos
C-TRAN	Taylor Eidt
WSDOT	Laurie Lebowsky
City of Camas	Jim Carothers
City of Washougal	Rob Charles
City of Battle Ground	Ryan Jeynes
City of Ridgefield	Grant Williams
City of La Center	Tony Cooper
Town of Yacolt	Tom Esteb
Port of Vancouver	Jim Hagar
Port of Camas-Washougal	Dave Ripp
Port of Ridgefield	Ethan Perry
Human Services Transportation Provider	Bill Baumann (Community in Motion)
ODOT	Scott Turnoy
Metro	Tom Kloster
Cowlitz Indian Tribe	Dean Reynolds
Columbia River Economic Development Council	Jennifer Baker

B. SKAMANIA COUNTY

The Skamania County Transportation Policy Committee was established in 1990 to oversee and coordinate transportation planning activities in the RTPO Skamania region. RTC Staff chairs the meeting.

SKAMANIA COUNTY TRANSPORTATION POLICY COMMITTEE

Jurisdiction/Agency	Representative
Skamania County	Tom Lannen, County Commissioner
City of Stevenson	Ben Shumaker, Planning Manager
City of North Bonneville	Brian Sabo, Mayor
Port of Skamania County	Pat Albaugh, Port Manager
WSDOT, Southwest Region	Laurie Lebowsky, SW Region Planning Manager

C. KLICKITAT COUNTY

The Klickitat County Transportation Policy Committee was established in 1990 to oversee and coordinate transportation planning activities in the RTPO Klickitat region. RTC Staff chairs the meeting.

KLICKITAT COUNTY TRANSPORTATION POLICY COMMITTEE

Jurisdiction/Agency	Representative
Klickitat County	Commissioner David Sauter
City of White Salmon	Ross Lambert, Public Works
City of Bingen	David Spratt, Public Works Superintendent
City of Goldendale	Karl Enyeart, Public Works Director
Port of Klickitat	James Herman, Port Commissioner
WSDOT, Southwest Region	Laurie Lebowsky, SW Region Planning Manager
Yakama Nation (ex-officio member)	Al Pinkham, Engineering Planner

D. BI-STATE COORDINATION

Both RTC, the MPO for the Clark County, Washington portion of the Portland-Vancouver metropolitan region, and Metro, MPO for the Oregon portion of the Portland-Vancouver region, recognize that bi-state travel is significant within the region. To address bi-state regional transportation system needs, RTC representatives participate on Metro's Transportation Policy Alternatives Committee (TPAC) and Joint Policy Advisory Committee on Transportation (JPACT). Metro is represented on RTC's Regional Transportation Advisory Committee (RTAC) and RTC Board of Directors. Currently, several locations on the I-5 and I-205 north corridors are at or near capacity during peak hours resulting in frequent traffic delays. The need to resolve increasing traffic congestion levels and to identify long-term solutions continues to be a priority issue. ODOT submitted a tolling application to FHWA on December 10, 2018 with a January 8, 2019 FHWA response requesting further detail and public outreach. Also of bi-state significance is continued coordination on air quality issues though the region has now reached air quality attainment status for both ozone and carbon monoxide.

The Bi-State Transportation Committee was established in 1999 to ensure bi-state transportation issues are addressed. The Committee was reconstituted in 2004 as the Bi-State Coordination Committee, per the Bi-State Coordination Charter, to address transportation issues of bi-state significance as well as bi-state land use issues that impact economic development, environmental, and environmental justice issues. On issues of bi-state transportation significance, the Committee’s discussions and recommendations are advisory to RTC, the Joint Policy Advisory Committee on Transportation (JPACT), and Metro. On issues of bi-state land use and economic significance, the Committee’s advisory recommendations are to the appropriate local and regional governments.

E. TRIBAL PARTICIPATION

On April 24, 2019 Governor Jay Inslee signed Engrossed House Bill 1584 into law, which requires RTPOs to provide an opportunity for tribes with reservation or trust lands within its planning area boundaries to participate as voting members of the RTPO. RTPOs are encouraged to facilitate tribal participation in the regional planning process. RTC reached out to tribes in the region which resulted in the Cowlitz Indian Tribe joining RTC and participating as an RTC Board member and Regional Transportation Advisory Committee member and the Yakama Nation opting to participate in the Klickitat County Transportation Policy Committee.

F. RTC STAFF

Figure 4 provides an overview of RTC staff with areas of work outlined. This will be updated in upcoming months.

RTC: Staffing	
Position	Duties
Executive Director	Overall MPO/RTPO Planning Activities, Coordination, and Management
Project Manager	Vancouver Area Smart Trek: Transportation System Management and Operations (TSMO)/Intelligent Transportation System (ITS), New Technologies, Urban Freeway Corridors Operations, Air Quality
Sr. Transportation Planner	Regional Transportation Plan, Unified Planning Work Program, Human Services Transportation Plan, Active Transportation Plan, Transportation Demand Management, Freight Planning
Sr. Transportation Planner	Transportation Improvement Program (TIP), Project Programming, RTPO: Klickitat and Skamania Counties, Congestion Management Process, Traffic Counts, Freight Traffic Data, Safety
Sr. Transportation Planner	Geographic Information System (GIS), Mapping, Data Graphics, Webmaster
Sr. Transportation Planner	Regional Travel Forecast Model, Data, Demographics, Title VI, ADA
Staff Assistant	RTC Board of Directors’ Meetings, Bi-State Coordination Committee Meetings, Appointment Scheduling
Office Assistant	General Administration, Reception, Regional Transportation Advisory Committee (RTAC) Meetings, Website
Accountant	Accounts Payable, Grant Billings

Figure 4: RTC Staff

PLANNING EMPHASIS AREAS

The UPWP is reflective of the national focus to encourage and promote the safe and efficient management, operation and development of transportation systems to serve the mobility needs of people and freight within and through urbanized areas as well as foster economic growth and development. The UPWP describes the transportation planning activities and summarizes local, state and federal funding sources required to meet the key transportation policy issues during the upcoming year. The UPWP implements federal, state and local transportation planning emphasis areas (PEAs). The Federal Highway Administration, the Federal Transit Administration and Washington State Department of Transportation identify transportation planning emphasis areas intended to guide the development of work programs for both metropolitan and statewide transportation planning processes.

FEDERAL PLANNING EMPHASIS AREAS

The Bipartisan Infrastructure Bill, is the current Federal Transportation Act signed into law by President Biden on November 15, 2021. Updated federal PEAs to help implement the BIL were outlined in a December 30, 2021 FHWA/FTA letter. In addition to continuing emphasis on metropolitan planning core functions and performance-based planning requirements, the updated PEAs include a significant number of new as well as continuing issues that will need to be addressed in the MPO's work program including in its Regional Transportation Plan and Transportation Improvement Program. The following federal PEAs are described in the December 30 letter under the issue headings:

- Tackling the Climate Crisis – Transition to a Clean Energy Resilient Future
- Equity and Justice 40 in Transportation Planning
- Complete Streets
- Public Involvement
- Strategic Highway System: (STRAHNET)/US Department of Defense Coordination
- Federal Land Management Agency (FLMA) Coordination
- Planning and Environmental Linkages (PEL)
- Data in Transportation Planning

The scope of the transportation planning process must address the federal planning factors listed in CFR 450.306 to:

- Support economic vitality of the metropolitan area, especially by enabling global competitiveness, productivity, and efficiency;
- Increase the safety of the transportation system for motorized and non-motorized users;
- Increase the security of the transportation system for motorized and non-motorized users;
- Increase accessibility and mobility of people and freight;
- Protect and enhance the environment, promote energy conservation, improve the quality of life, and promote consistency between transportation improvements and State and local planned growth and economic development patterns;

- Enhance the integration and connectivity of the transportation system, across and between modes, for people and freight;
- Promote efficient system management and operation;
- Emphasize the preservation of the existing transportation system;
- Improve the resiliency and reliability of the transportation system and reduce or mitigate stormwater impacts of surface transportation; and
- Enhance travel and tourism.

STATE PLANNING EMPHASIS AREAS

Washington State's Growth Management Act established Regional Transportation Planning Organizations (RTPOs) as the institutions for identifying regional transportation priorities and coordinating transportation planning with local comprehensive plans at all jurisdictional levels. WSDOT has identified the following planning emphasis areas for MPOs and RTPOs to dedicate time and/or resources towards as part of the FY 2023 UPWP:

- **Administrative**
 - Duties of the RTPO – While WSDOT is reassessing RTPO duties, RTPOs will continue work on “Efficient multimodal transportation systems based on regional priorities and coordinated with county and city comprehensive plans”; one of thirteen statewide planning goals established by the Growth Management Act (GMA). The regional transportation plans prepared by RTPOs have an important role in achieving consistency between state, county, city, and town plans and policies. UPWP work elements should continue to reflect general RTPO duties defined in RCW 47.80.023 and WAC 468-86. These duties include working with local jurisdictions on Growth Management Act/Comprehensive Plans including certification of local Comprehensive Plan transportation elements, implementation of State transportation policy goals, and addressing top statewide themes.
 - Website – MPO/RTPOs should post governing documents online
 - Streamline UPWPs – e.g. only report on key accomplishments as part of the annual performance report
- **Planning Collaboration**
 - Statewide Plans:
 - Highway System Plan
 - Multimodal Investment Strategy
 - Statewide Public Transportation Plan
 - Statewide Human Services Transportation Plan, implementation
 - State Freight Plan and Amtrak Cascades Service Development Plan
 - State Active Transportation Plan - in Regional Active Transportation Plans, identify active transportation needs on the state system in a manner consistent with the Statewide ATP (published Dec. 20, 2021)
 - Connection between land use and transportation - e.g. address demand management through coordinated land use decision making
 - The Legislature directed WSDOT to propose a methodology for updating vehicle miles traveled targets (VMT) at the county level – RTPOs to play an important role

- **Urban Areas Update**
 - Update urban area boundaries - revisit urban/rural functional classification
 - Periodic review of Functional Classification Networks - ensure system continuity, accessibility, and mobility are met
 - Review unbuilt proposed routes on the system for six years or more - if construction is not reasonably expected to begin in the 4-year STIP timeframe, consider their removal
- **Financial Accounting**
 - Identify all fund sources expected to be utilized in the delivery of the work program
 - Expenditures, revenue sources, rollover from the previous year, matching funds
 - Identify consultant assistance and funding to be used
 - In the Annual Performance and Expenditure Report:
 - Identify funds expended (by source and task) compared to the budgeted amount
 - Summarize overall budgeted versus actual expended amounts - explain any significant differences
- **Budget**
 - Identify expected revenues and planned expenditures by fund type
 - Account for any federal funds being rolled over from the previous year with required local match - include STBG funds used for planning purposes

LOCAL EMPHASIS

RTC's FY 2023 UPWP will continue its fundamental metropolitan transportation planning program activities and advance project-related activities. In FY 2022, Phase 1 of the Regional Active Transportation Plan for Clark County, Local Road Safety Plans, the ITS Regional Architecture Study and Shared Central Signal System Study were completed or are due for completion. In FY 2023, RTC will be continue to be engaged in providing technical and policy input for ongoing and emerging bi-state studies including: the Hood River Bridge replacement EIS; and development of the I-5 Bridge Replacement, regional policy and project discussions regarding interstate tolling and congestion pricing, Phase 2 of the Regional Active Transportation Plan will be underway and RTC will look to acquire data to support regional and local transportation planning and programming following a transportation Data Study.

THE REGION'S KEY TRANSPORTATION ISSUES:

RTC's UPWP describes the region's regional transportation planning process that is led by the RTC Board and informed by data and its analysis. RTC provides the multi-jurisdictional forum for the region's collaborative transportation decision making process. A key issue in planning for the region's transportation system is the continued implementation of a performance-managed transportation system and investment decision-making process as required by federal rules. RTC's regional planning process assists member agencies to focus on smart investments and innovations in priority corridors to meet the multi-modal demands of the regional transportation system. RTC's project programming process continues to change accordingly to maximize opportunities to use federal transportation resources for this region's transportation needs.

Growth in the region continues to increase pressures on the transportation system. Local partners are mindful of the interconnectedness of transportation infrastructure investment, jobs and economic development and are aware of the continued need to invest in regional transportation

infrastructure and services as well as to maintain the condition of current assets. The regional planning strategy focuses on smart investment of capital to provide solutions to the identified needs in the Regional Transportation Plan.

Key transportation issues for the region include:

- **Support Growth and Development:** The region's transportation system needs to support both existing needs and growth in the region. Washington Office of Financial Management estimated Clark County population at 513,100 in 2021, up by 9,800 people from the 2020 Census population of 503,311; a 1.9% annual growth rate. OFM's 2017 medium series projection forecasts that Clark County's population will increase by over 155,000 people to 643,552 by 2040. Regional trends point to continued and sustained growth in the metropolitan region. Within Clark County specifically, new household and business formations combined with a vibrant regional economy, are creating high demand for regional and local mobility services and infrastructure.
- **Post-COVID Transportation:** Pandemic effects on transportation demand initially resulted in less traffic volumes and lower transit ridership with many working from home, schools online and jobs loss. As the region recovers from the pandemic, RTC is tracking transportation impacts and longer-term consequences on travel demand and use of transportation modes.
- **Regional Project Funding:** Transportation projects and strategies are identified in the Congestion Management Process and Regional Transportation Plan and are programmed for funding in the Transportation Improvement Program. RTC recognizes the need for timely transportation system investments. In this region, need for transportation improvement exceeds available funding. The region's current 4-Year Transportation Improvement Program forecasts over \$424 Million in planned transportation system investment and maintenance. Even with that level of planned investment, many of the region's needs could remain unmet, and both additional and more prudent investment and mobility strategies will need to be deployed. RTC's FY 2023 Work Program and budget continues support for the regional collaboration needed to develop studies, strategies, and projects which will shape the region's transportation investment strategy for years to come, working with WSDOT and planning partners to identify Practical Solutions to transportation needs.
- **2040 Regional Transportation Plan - Implementation and RTP Update Development:** A 2040 update to the Regional Transportation Plan for Clark County was adopted in March 2019 and RTP project listings were amended in September 2021. Work on the RTP in FY 2023 will focus on developing the next RTP update, due in late 2023, as identified in the RTP scoping developed in FY 2022. Development of RTP modal components, level of service standards, transportation system performance and the future of transportation will be addressed.
- **Regional Studies:** A number of regional studies will be continued in FY 2023 including the Interstate Bridge Replacement project and RTC's technical support for WA SB-5806, the work of the Joint Oregon-Washington Legislative Action Committee. RTC will also continue to support C-TRAN's development of Bus Rapid Transit corridors; construction of the Mill Plain Bus Rapid Transit and development of the Highway 99 corridor. In the Columbia River Gorge region, the Hood River Bridge EIS continues. RTC continues to participate in Oregon's tolling plans as decisions will affect both interstate corridors, I-5 and I-205. ODOT submitted a tolling application

to FHWA on December 10, 2018 with a January 8, 2019 FHWA response requesting further detail and public outreach. Metro is also working on regional Transportation Congestion Pricing after completion of a technical evaluation of the efficacy and potential impacts of four types of congestion pricing in the region such as cordon pricing, Vehicle Miles Traveled road user charge, roadway charges and dynamic pricing for parking.

- **Federal Law:** On November 15, 2021, President Biden signed the Infrastructure Investment and Jobs Act (IIJA) (Public Law 117-58, also known as the “Bipartisan Infrastructure Law”) into law. The Bipartisan Infrastructure Law provides \$550 billion over fiscal years 2022 through 2026 in new Federal investment in infrastructure, including in roads, bridges, and mass transit, water infrastructure, resilience, and broadband. RTC will work with transportation partners to implement the BIL. RTC will continue to engage in Performance Based Planning and Programming engaging regional partners in reviewing and updating performance measure targets. RTC’s current strategy is to support WSDOT in attaining the state’s established statewide targets for performance measures and supporting the local transit agency, C-TRAN, in asset management and Safety Plan targets. RTC will continue to address performance measure targets, data collection, and reporting systems to implement key policy goals of the Federal Transportation Act.
- **Partnership Building:** Building partnerships and linkages among like or affiliated agencies and groups is an important tool in facilitating collaborative regional planning and investment decision-making. RTC staff will continue to commit considerable effort to building information sharing, research, and targeted project partnerships and alliances in order to facilitate maximum return on investment for regional, state, and locally funded transportation investments. RTC will continue to build upon existing partnerships with Oregon’s Metro and with partners such as the Clark County Transportation Alliance, Identity Clark County, Columbia River Economic Development Council, and Mid-Columbia Economic Development District. RTC will continue to partner with RTC member agencies with RTC providing technical support and task work for these partners. New partnerships may be nurtured to address the linkage between housing and transportation with agencies such as the Vancouver Housing Authority.

UNFUNDED PLANNING ACTIVITIES

RTC is asked to include a list in the UPWP of planning activities that could be undertaken by RTC if additional funding and/or staff were made available to support regional transportation planning activities. These unfunded planning activities include:

- **Clark County Freight Mobility Study (2010):** Plan element update. Since Plan adoption, state and federal agencies have adopted new policies and programs which relate to freight and commerce activities. The purpose of the Plan update is intended to confirm local and regional data, review existing conditions, identify future priority project needs, address performance measures, and incorporate a review of current local, state and federal policy and funding programs related to freight and commerce activities. Cost estimate: \$40,000 - \$50,000 (*scope dependent*).
- **Regional Travel Demand Model Tools:** Research and application development for the regional travel demand modeling process. The purpose of this research and application

development is to enhance RTC travel demand model tool application for use in countywide and sub-area model applications, particularly in the application of dynamic traffic assignment tools. Cost estimate: \$25,000 - \$35,000 (*scope dependent*).

- **Data Acquisition:** Recurring purchase / license of regional traffic data and/or services to support regional travel demand and sub-area modeling and Congestion Management Process activities. Cost estimate: \$50,000-\$100,000 (*scope dependent*).
- **Transportation Performance Measures Implementation Actions:** RTC provides technical and policy support to the statewide implementation of federal transportation performance measures. On occasion, RTC may advance special studies and implementation activities which advance progress towards the region's implementation of Safety and Congestion Management targets. Scopes of work for implementation actions are defined through the multi-agency planning consultation process. Cost estimate: \$25,000-\$75,000 (*scope dependent*).
- **Bipartisan Infrastructure Law (BIL) Implementation:** New policies and programs are defined with the Bipartisan Infrastructure Law, and RTC may need to initiate policy and/or project specific studies which support regional implementation of the BIL. Specific policy and study topics may include: Electric Vehicle infrastructure planning; Equity and Climate adaptation policies and strategies; Complete Streets and active transportation systems planning and project development; Housing and Land Use partner coordination and action planning; and, project development and scoping, for competitive grant applications. Cost estimate: \$10,000-\$100,000 (*scope dependent*).
- **Transportation Equity Needs Assessment:** Conduct a transportation equity needs assessment through public outreach and data analyses to better identify the needs of historically under-represented and underserved populations in Clark County. The assessment findings would inform equity issues across the Regional Transportation Plan's (RTP) vision and goals; and recommendations to address identified needs. The findings would also shape how equity is considered in project selection and performance analysis in the RTP and Transportation Improvement Program (TIP). Cost estimate: \$25,000-\$40,000 (*scope dependent*).
- **Regional Vehicle Miles Traveled Target Setting:** The Washington Legislature has directed state agencies to develop vehicles miles traveled targets for certain counties in Washington state, including Clark County. State agencies are to prepare targets and implementation recommendations to the Legislature by June 2023. RTC may need technical services in support of state agency review of policies and targets for Clark County. Cost Estimate: \$10,000-\$25,000 (*scope dependent*).
- **Regional Transportation Demand Management (TDM) Strategy:** Research study for a comprehensive RTC region TDM strategy for in update to the regional Commute Trip Reduction Plan which implements RCW 70.94.527. Study strategies would be evaluated and paired with corridor operations strategies and capital investment plans to promote corridor specific management strategies. The intent of the TDM strategy is to optimize existing and

future transportation corridor network performance and multi-modal systems. Study findings would support regional implementation of Commute Trip Reduction plan(s). Cost Estimate: \$35,000-\$50,000 (*scope dependent*).

- **Clark County High Capacity Transit System Study (2008):** Plan element update. Since Plan adoption, C-TRAN has implemented several priority projects noted in the 2008 Plan including: Fourth Plain BRT, Bus on Shoulder service on SR-14, and is advancing Mill Plain BRT, and BRT in the Highway 99 corridors. The purpose of the Plan update is intended to confirm the designated regional high capacity transit strategy and designated corridors and ensure Plan compliance with local, regional and federal policy. Cost estimate: \$50,000 - \$100,000 (*scope dependent*).
- **Growth Management Corridor Planning:** Provide policy review and technical support to partner with agencies for study of future long-range corridor plans. In April 2008, the RTC Board of Directors completed a Transportation Corridor Visioning Study. The RTC Board found a need for more detailed review of Clark County's long-term countywide growth vision and strategies, which could include corridor specific scenario planning, which should be supported by a robust process involving local agencies and public outreach and engagement. RTC may provide technical support in the study of future growth management plan scenarios, with specific support for evaluating future regional travel forecasts to identify future multi-modal corridor needs. Cost Estimate: \$150,000 - \$300,000 (*scope dependent*).
- **Research Partnership:** Partner with Portland State University Transportation Research and Education Center - Portal Data Archive, for utilization of the comprehensive PORTAL traffic data program and academic researchers in an update to RTC's Congestion Management Process. Cost estimate: \$15,000 to \$25,000 (*scope dependent*).

1. REGIONAL TRANSPORTATION PLANNING PROGRAM

1A. REGIONAL TRANSPORTATION PLAN

The Regional Transportation Plan (RTP) for Clark County is the region's long-range transportation plan. The Plan's purpose is to promote and guide development of a multimodal transportation system for the efficient movement of people and goods, using environmentally sound principles and fiscal constraint. To meet planning requirements, the RTP has a planning horizon of at least 20 years. Development of the most recent RTP with a horizon year of 2040 began in 2017 and continued through 2018 with adoption of the Plan in March 2019. The Plan maintains consistency between federal, state and local plans. The 2019 RTP is consistent with local land uses outlined in local Comprehensive Growth Management Plans. The RTP also reflects the Washington Transportation Plan in place at time of RTP adoption. The RTP is compliant with the FAST Act, the federal transportation act in place at the time of RTP adoption. The RTP addresses performance-based planning and programming requirements with listing of federal performance measures and targets established to date. The Plan provides a vision for an efficient future transportation system and direction for sound transportation investments. The Plan also provides additional detail regarding active transportation planning, addresses the impacts of technology on future transportation and, with the RTP amendment of September 2021, has an updated list of identified transportation projects and transportation strategies. In FY 2023, work will be underway on the next RTP update scheduled for adoption in late 2023 (FY2024).

Work Element Objectives: Regional Transportation Plan

- Develop and implement the Clark County RTP to comply with federal law and guidance including RTP updates or amendments to reflect changing land uses, demographic trends, equity, economic conditions, financial trends, regulations and study results and to maintain consistency between state, local and regional plans. Regular update, review and amendment of the Regional Transportation Plan (RTP) is a federal and state requirement; of the Federal Transportation Act and the state Growth Management Act (GMA). Existing federal laws require Plan update in air quality attainment areas such as Clark County at least every five years and the Washington state requires the Plan be reviewed for currency every two years. Whenever possible, major update to the RTP for Clark County will be scheduled to coincide with update to the County and local jurisdictions' land uses in the comprehensive growth management plans and synchronized with Metro's RTP update. The RTP update process will address federal transportation policy interests and reflect the latest versions of statewide plans such as Washington's Transportation Plan (WTP), Highway System Plan (HSP), State modal plans and corridor planning initiatives. At each RTP update, the results of recent transportation planning studies are incorporated and new or revised regional transportation system needs are identified and documented. RTP development relies on analysis of results from the 20-year regional travel forecast model as well as results from a six-year highway capacity needs analysis and 20-year transit planning. The Plan addresses the transportation priorities of the region.
- Amendments to the RTP must be consistent with RTC's RTP Amendments Policies and Process (RTC Board adopted April 2020). RTP amendments can be requested by member agencies and jurisdictions to maintain consistency between state, regional and local plans.

-
- Address the federal planning factors required of the metropolitan transportation planning process (as listed on page xiii) in the RTP.
 - Develop an RTP that complies with Washington's state law, the Revised Code of Washington (RCW), and guidance provided in the Washington Administrative Code (WAC).
 - Use public input on transportation issues to help guide the RTP's development.
 - Reflect results from the Congestion Management Process used as a tool to help the region make decisions on transportation project needs to be identified in the RTP.
 - Address bi-state travel needs and review major bi-state policy positions and issues.
 - Address regional corridors, associated intermodal connections and statewide intercity mobility services.
 - Help maintain federal clean air standards consistent with the Clean Air Act Amendments 1990.
 - Reflect planning for transportation modes and strategies such as transit, freight transportation, active transportation, transportation system management and operations, Intelligent Transportation System (ITS) applications, as well as Transportation Demand Management (TDM) strategies and Commute Trip Reduction efforts to make a more efficient transportation system.
 - Describe concurrency management and its influence on development of the regional transportation system.
 - Evaluate the environmental impacts and mitigation strategies related to the regional transportation system in consultation with environmental resource agencies including the Federal Land Management Agencies (FLMA).
 - Identify projects and strategies that can be implemented subsequent to RTP adoption through more detailed corridor planning processes and eventual programming of funds for project construction and implementation in the Transportation Improvement Program (TIP).
 - Maintain consistency between state, regional and local transportation plans as required by the state's Growth Management Act. This includes certification of the transportation elements of local Growth Management Plans and their review for consistency with the RTP. A Certification Process Guide and accompanying checklist adopted by the RTC Board in March 2016 guides this process.
 - Monitor transportation system performance and report on transportation system performance.
 - Coordinate the RTP with regional and local land use plans. In Washington State, local jurisdictions address land use planning in Comprehensive Plans required by Washington State's Growth Management laws. The GMA established RTPO's as the venues for identifying regional priorities and coordinating transportation planning at all jurisdictional levels with local comprehensive plans. WSDOT encourages RTPOs to work as partners with local governments in the early stages of local comprehensive plan and countywide planning policy development to more effectively identify and resolve consistency issues.

Relationship to Other Work Elements: Regional Transportation Plan

The RTP considers the reciprocal connections between land use growth and multimodal transportation system needs and development. It also identifies the mix of transportation strategies

to address future transportation system needs. The RTP for Clark County is interrelated with all other RTC transportation planning work elements. In particular, the RTP uses information, data and analysis resulting from the Congestion Management Process to identify transportation needs and solutions. The RTP also serves to identify transportation projects and strategies to be funded by programming in the metropolitan Transportation Improvement Program (TIP).

FY 2023 Tasks and Products: Regional Transportation Plan

In FY2023 RTC will be developing the next update to the RTP having scoped the update in FY 2022. The focus will be on developing the Plan's modal elements and on identifying transportation system needs. Specific tasks and products are described below:

- Federal Functional Classification – work with local jurisdictions and WSDOT to update the federal functional classification system and reflect any changes in the next RTP update. (As needed)
- System Performance – Report on transportation system performance measures, monitoring and updates to targets set to guide transportation investment decisions, project and strategies identified in the RTP in compliance with the federal transportation act. The goal is to have a more effective investment process for federal transportation funds. RTC staff will continue to work with WSDOT, regional and local planning partners, including C-TRAN the local transit service provider, and other MPOs in the state. RTC will review updated state-set targets and, as updated targets are set, will consider whether to continue to support WSDOT in attaining WSDOT's established performance targets or set regional targets. (Ongoing)
- Practical Solutions – RTC will continue to work with WSDOT to identify practical solutions to transportation issues in an effort to maximize benefits. This approach to identifying transportation solutions, including projects and strategies, will impact the list of transportation projects identified in next RTP update. (Ongoing)
- Project Priorities – project and transportation strategy priorities identified in the RTP will be reviewed annually.
- Safety – An update to the Safety Assessment for Clark County will be completed using crash data compiled by the State and used in the performance monitoring and target setting process. RTC will work with local agencies to develop and implement Complete Streets/Safe Streets to ensure streets are designed for all users dependent on the context of the transportation facility. (Ongoing)
- Transit – The RTP includes recommendations and guidance provided by the region's transit development plans, notably C-TRAN's Transit Development Program and 20-Year Transit Development Plan, C-TRAN 2030, (C-TRAN, June 2010; updated December 2016) and the Clark County High Capacity Transit System Study (RTC, December 2008). C-TRAN opened its first Bus Rapid Transit corridor, The Vine, in the Fourth Plain corridor in January 2017, and is working on a second BRT corridor on Mill Plain and a third for Highway 99. C-TRAN is also implementing micro-transit options in some sub-areas of Clark County.
- Efficiencies – It is recognized that the most efficient use of the existing transportation system can be realized through implementation of Transportation Demand Management (TDM) and Transportation System Management strategies. RTC will continue to coordinate with planning partners in developing the Congestion Management Process, Transportation System

Management and Operations through RTC's VAST program (see VAST element) and Commute Trip Reduction plans. The solutions identified in these TDM and TSM Plans are an important part of RTP transportation strategies to meet travel demands. TDM planning in the region uses a broader definition of demand management and identifies policies, programs and actions including use of commute alternatives, reducing the need to travel as well as spreading the timing of travel to less congested periods, and route-shifting of vehicles to less congested facilities or systems. (Ongoing)

- RTC works with local partners to implement transportation demand strategies outlined in local and regional Commute Trip Reduction plans. Affected local jurisdictions, as currently determined by the State's CTR law, are: Vancouver, Camas, Washougal, and unincorporated Clark County. Local and Regional CTR Plans, as well as a Downtown Vancouver Growth and Transportation Efficiency Center (GTEC) Plan, were initially adopted by RTC in October 2007 with minor updates in 2013 and in 2015 both Regional and Local Commute Trip Reduction Plans were last updated. (As needed)
- Active Transportation – The RTP reflects work with WSDOT and local jurisdictions and agencies, including Clark County Public Health, to ensure that bicycling, pedestrian and rolling modes are addressed. RTC will continue to work with state and local partners to plan for active transportation policies and transportation needs to support transportation options, community quality and health. The Regional Active Transportation Plan for Clark County, first phase published in September 2021 and second phase underway, will be integrated into the RTP at the RTP's next update. The action plan developed by Clark County's Walkability Action Institute team in May 2021 will be reflected in active transportation activities. To advance active transportation planning, RTC will continue to represent RTC at monthly meetings of the Clark Communities Bicycle and Pedestrian Advisory Committee, will continue to collaborate with statewide Active Community Environments (ACE) stakeholders and with the SW Washington Healthy Living Collaborative which is now a part of the Southwest Washington Accountable Community of Health (SWACH). RTC will work with local partners to review policies and suggest projects to improve non-motorized transportation modes in the region.
- Changing Demographics and Lifestyles – the 2023 RTP update will address changing demographics and lifestyles and how these will affect transportation demand in the region. RTC will continue to monitor demographic trends and work with local agencies and institutions, such as the Clark County Commission on Aging and Accessible Transportation Coalition Initiative, to implement transportation recommendations to meet transportation needs. (Ongoing and as new data allows)
- Human Services Transportation Planning - The process to develop the region's Human Services Transportation Plan and human services transportation project priorities is led by RTC (see separate HSTP work element) The HSTP for Clark, Skamania and Klickitat Counties update is due in December 2022 and supports funding applications for WSDOT's consolidated public transportation grant program. The special transportation needs of the elderly, people with disabilities, and low-income populations will continue to be reflected in the RTP.
- Freight Transportation – Elements of the Clark County Freight Mobility Study (RTC, Dec. 2010) are incorporated into the RTP to ensure that the significance of freight transportation and its importance to the local economy is documented. RTC will continue to prepare materials relating

to freight transportation and work with partners and business interest groups, such as Identity Clark County and the Southwest Freight and Commerce Task Force (FACT) Coalition, to focus attention on needed multi-modal freight investments and critical economic corridors within the region. RTC will continue to work with local partners on opportunities to compete for freight grant funds. RTC will also coordinate with WSDOT's Freight Division to inform WSDOT of freight needs in the region and with the Freight Mobility Strategic Investment Board (FMSIB). In FY 2022/23, RTC is working with Metro on the Regional Freight Delay and Commodities Movement Study which will be reflected in the RTP's 2023 update.

- Economic Development – RTC will continue to work with the Columbia River Economic Development Council (CREDC) to support implementation of its Clark County Comprehensive Economic Development Plan and to determine transportation needs at a regional level that can support economic development. RTC coordinated with CREDC on an update to the Employment Land Study in 2019 and continues to participate in regular Economic Development Partners meetings. RTC will compile data relating to economic analysis including GDP, employment by industry, unemployment rates, wages and salary changes, household income, commuting patterns, development permits, housing construction, to inform the transportation planning process and to support transportation funding applications. (Ongoing)
- Regional Emergency Transportation Routes - RTC will coordinate with Metro and the Regional Disaster Preparedness Organization (RDPO) on a second phase for [RETRs](#) to prioritize/tier the updated routes and develop operational guidance for route owners/operators.
- Emerging Transportation Technologies - Regional transportation system development is at an evolutionary point where emerging transportation technologies that can impact transportation networks and performance are developing rapidly. RTC will continue to be aware of emerging technologies and their use to serve transportation mobility, access and equity for passenger, freight and goods movement. (Ongoing)
- Air Quality and Climate Change – Strategies to reduce Vehicle Miles Traveled per capita and to help reduce greenhouse gas emissions are part of the requirements of RCW 70.235.020, RCW 47.01.440 and Governor's Executive Order 09-05 – Washington's Leadership on Climate Change now superseded by Governor's Executive Order 14-04. RTC will continue to address VMT reduction strategies as part of the regional transportation planning process.
- Corridor Planning –RTC will continue to coordinate with and support WSDOT in corridor planning and Transportation System Management and Operations (TSMO) implementation including WSDOT's ramp signal program. RTC provides technical support for the WA SB-5806 I-5 Legislative Task Force addressing I-5 Interstate Bridge replacement with work including coordination with transit agencies and Transportation Demand Management options.
- Financial Plan – The financial Plan section of the RTP includes costs of system maintenance, preservation, safety improvement and operating costs and will be updated in FY 2023. RTC will continue to work with local and state transportation interests to bring attention to transportation system funding needs.
- Consistency – RTC will continue work with planning partners to maintain consistency between state, local, and federal transportation plans. RTC will provide local jurisdictions with GMA Plan certifications as requested. (Ongoing)

- Consultation between RTC, state and federal environmental agencies to address environmental mitigation strategies as part of the RTP process will continue as well as coordination with tribal governments. Resource agencies include the State Historic Preservation Office and local jurisdictions’ environmental departments. (Ongoing)
- The RTP development and implementation process involves the Regional Transportation Advisory Committee whose members provide technical review and recommendations for RTP work elements with RTC staff providing informational briefings. The RTC Board is also updated, as needed, on the RTP.
- RTC involves the public in development of the metropolitan transportation planning process and, in particular, in development of RTP elements. Opportunities for public participation are offered with website information, media releases, communication with neighborhood groups, and stakeholders on the regional transportation planning process. Consultation with interested resource agencies and tribes with interests in the transportation system in the Clark County region continues. At monthly Board meetings, time is set aside to allow citizens to comment on metropolitan transportation planning issues and their input is considered in the RTP update. RTC will continue to explore opportunities to procure student project assignments to help update and develop elements of the RTP. (Ongoing)
- **Planning Assistance** - During FY 23 RTC may competitively develop an On-Call Consultant Assistance roster (On-Call Roster) of qualified vendors with the requisite skills to support implementation of RTC’s Regional Transportation Planning programs and planned activities. Upon establishment of an On-Call Roster, RTC may identify Regional Transportation Planning activities/tasks which could be supported by the On-Call Roster.

FY 2023 Funding: Regional Transportation Plan Work Element

<u>FY 2023 Revenues:</u>		<u>FY 2023 Expenses:</u>	
	\$		\$
• Federal FHWA PL	\$211,514	• RTC and possible on-call consultant assistance	\$487,527.
• Federal STBG	\$147,250		
• Federal FTA	\$62,946		
• State RTPPO	\$26,424		
• Local MPO Funds or Toll Credits	\$39,393		
	\$487,527		\$487,527

Federal Program Funds matched by State RTPPO, and/or local MPO Funds and/or Toll Credits

1B. TRANSPORTATION IMPROVEMENT PROGRAM

The metropolitan Transportation Improvement Program (TIP) is a multi-year program of federally funded and regionally significant transportation projects within the Clark County, Washington region. The TIP includes a priority list of projects to be carried out in the next four years and a financial plan that demonstrates how it can be implemented. The projects programmed in the TIP originate from project recommendations made in the Regional Transportation Plan (RTP) or are developed into projects from a series of program recommendations such as preservation, maintenance, and safety. The TIP is developed by the MPO in a cooperative and coordinated process involving local jurisdictions, C-TRAN and the Washington State Department of Transportation (WSDOT). The development process includes public outreach and participation. RTC's TIP and Public Participation Plan satisfy the public participation requirements for the Program of Projects (POP). Projects listed in the TIP indicate a commitment for funding of these projects and project costs are expressed in Year of Expenditure (YOE) dollars.

Work Element Objectives and Activities: Transportation Improvement Program

- Develop and adopt the Transportation Improvement Program (TIP) consistent with the requirements of the Federal Transportation Act.
- Review the TIP development process and project selection criteria used to evaluate, select and prioritize projects proposed for federal transportation funding. Project selection criteria reflect the multiple policy objectives for the regional transportation system (e.g. safety, maintenance and operation of existing system, multimodal options, mobility, economic development and air quality improvement). The TIP development process is documented in RTC's Transportation Programming Guidebook. TIP process participants rely on this Guidebook to learn of TIP policies and procedures.
- Understand and implement the federal transportation reauthorization act (IIJA Act) regarding the Transportation Improvement Program.
- Coordinate the grant application process for federal, state and regionally-competitive funding programs such as federal Surface Transportation Block Grant program (STBG), federal Transportation Alternatives (TA), state Transportation Improvement Board (TIB) programs, and Safe Routes to School programs, etc.
- Program Congestion Mitigation and Air Quality (CMAQ) funds with consideration given to emissions reduction benefits provided by projects.
- Coordinate with local jurisdictions as they develop their Transportation Improvement and Transit Development Programs.
- Coordinate with transit and human service agencies to address human services transportation needs and develop human services transportation projects.
- Develop a realistic financial plan for the TIP financially constrained by year. The TIP must address costs for projects as well as operations and maintenance of the transportation system.
- Consider air quality impacts.
- Amend the TIP as necessary.
- Monitor TIP project implementation and obligation of project funding.

- Ensure TIP data is input into the State Transportation Improvement Program (STIP) program software and submitted to WSDOT for inclusion in the STIP.

Relationship to Other Work Elements: Transportation Improvement Program

The TIP provides the link between the RTP and project implementation. The process to prioritize TIP projects uses data from the transportation database, guidance and criteria from the Congestion Management Process and regional travel forecasting model output. It relates to the Coordination and Management element’s Public Participation efforts described in the UPWP. The TIP program requires significant coordination with local jurisdictions and implementing agencies in the Clark County region.

FY 2023 Tasks and Products: Transportation Improvement Program

- Development of the RTC’s 2023-2026 Transportation Improvement Program will be coordinated with planning partners, the public given opportunity to comment on TIP process and projects and the adopted TIP will include programming of projects for all four years. Performance based planning and programming, including performance targets, will be incorporated in the TIP as federal timelines mandate. *(Fall 2022)*
- Update the Transportation Programming Guidebook; TIP Policies and Procedures, if warranted.
- TIP amendments as necessary. *(Ongoing)*
- Coordination of regional transportation projects for federal and statewide competitive programs. *(Ongoing)*
- Reports on tracking of TIP project implementation and obligation of funding of TIP-programmed projects. *(Ongoing)*
- Maintain a project database to help project tracking efforts. More information on development of a project database to help project tracking efforts is found in the Data/Forecast work element. *(Ongoing)*
- Provide input to update the State Transportation Improvement Program (STIP). *(Ongoing)*
- Public participation in TIP development including providing information and ability to comment online. *(Ongoing)*

FY 2023 Funding: Transportation Improvement Program

<u>FY 2023 Revenues:</u>	\$	<u>FY 2023 Expenses:</u>	\$
• Federal FHWA PL	\$95,522	• RTC	\$220,172
• Federal STBG	66,500		
• Federal FTA	\$28,427		
• State RTPO	\$10,569		
• Local MPO Funds or Toll Credits	\$19,154		
	\$220,172		\$220,172

Federal Program Funds matched by State RTPO, and/or local MPO Funds and/or Toll Credits

1C. CONGESTION MANAGEMENT PROCESS

The Congestion Management Process focuses on transportation performance within corridors through monitoring of vehicular travel, auto occupancy, truck traffic, transit, travel demand management strategies, system management strategies, and traffic operations in an effort to identify solutions to address congestion. The congestion monitoring program provides valuable information to decision-makers in identifying the most cost-effective strategies to provide congestion relief. The CMP is used to identify system improvements, to guide investments and also to track the effectiveness, over time, of system improvements that are made.

Work Element Objectives and Activities: Congestion Management Process

- Continued implementation of the Congestion Management Process to provide effective management of existing and future transportation facilities and to evaluate potential strategies for managing congestion. The Congestion Management Process is developed, established and implemented as part of the metropolitan planning process and incorporates six elements as outlined in 23 CFR 450.320(c). These elements include multimodal transportation system performance monitoring and evaluation, data collection, coordination with planning partners, evaluation of future system performance, identifying an implementation schedule, responsibilities and funding, and assessment of the effectiveness of implemented strategies. Strategies may include demand management, traffic operational improvements, public transportation improvements, ITS technologies, and, where necessary, additional system capacity.
- Provide the region with a better understanding of how the region's transportation system operates. The Congestion Management Process is intended to be a continuing, systematic process that provides information on transportation system performance.
- Update and enhance the MPO region's transportation database including traffic counts and other database elements such as traffic delay, transit ridership and capacity, travel time and speed, auto occupancy and vehicle classification data (freight truck counts) for Congestion Management Process (CMP) corridors. The transportation database can be referenced and queried to meet user-defined criteria.
- Coordinate with local jurisdictions and local agencies to ensure consistency of data collection, data factoring and ease of data storage/retrieval. Coordination is a key element to ensure the traffic count and turn movement data support local and regional transportation planning studies and concurrency management programs. Traffic count data is collected, validated, factored and incorporated into the existing count program. Data collection includes working with regional partners to develop Portland State University's Portal data archive system for use in the CMP.
- Measure and analyze performance of the transportation corridors in the CMP network. This system performance information is used to help identify system needs and solutions. The data is also used to support transportation concurrency analysis.
- Publish results of the Congestion Management Monitoring process in a System Performance Report that is updated annually. Each year the Report's content and structure is reviewed to enhance its use, access and level of analysis.
- Coordinate with WSDOT and local agencies to help enhance use of the CMP in developing capacity

or operational solutions to address transportation deficiencies identified as part of the congestion management monitoring process and then incorporate into updates to the RTP and TIP.

- Provide CMP data and system performance indicators to inform state and local transportation plan updates.
- The CMP database and system monitoring will be integrated with metropolitan planning efforts related to the Regional Transportation Plan's update, federal performance measures, the Transportation Improvement Program, and the VAST/Transportation System Management and Operations process.
- Conduct a study with partner agencies to analyze both local and regional transportation data needs and identify best sources for needed transportation data. This study should result in both future deployment of data collection technology and purchase/acquisition of transportation data for the CMP and other transportation uses.

Relationship to Other Work: Congestion Management Process

- Congestion monitoring is a key component of the regional transportation planning process. The Congestion Management Process for the Clark County region supports the long-term transportation goals and objectives defined in the Regional Transportation Plan. It assists in identifying the most effective transportation strategies and projects to address congestion. These identified strategies and projects are described and listed in the RTP and programmed for funding in the TIP. The overall Congestion Management Process includes the region's work on transportation demand management, Commute Trip Reduction efforts, and system management efforts addressed under a separate work element; the Vancouver Area Smart Trek (VAST). Data and information compiled for the Congestion Management Process relates to the Regional Transportation Data and Travel Forecast work element.

FY 2023 Tasks and Products: Congestion Management Process

- A Congestion Management Process that includes all six CMP elements as outlined in 23 CFR Part 450 Sec. 320). (*Ongoing*)
- Analyze transportation needs and identify best sources for needed transportation data.
- Updated traffic counts, turning movement counts, vehicle classification (truck) counts, travel delay and other key data for numerous locations throughout Clark County. Data updates will come from new counts and the compilation of traffic count information developed by the state and local transportation agencies. New and historic data will be made available on RTC's web site (<http://www.wa.gov/rtc>). Traffic count data is separated into 24 hour and peak one-hour (a.m. and p.m. peak) categories. Scans of traffic counts are stored to help meet other needs and to support future regional travel forecast model enhancement and update. (*Ongoing*)
- Update other CMP corridor data including auto occupancy, roadway lane density, vehicle classification (truck counts), transit ridership, transit capacity, travel time and speed. Data should support the CMP, concurrency and/or other regional transportation planning programs. (*Ongoing*)
- Compare the most recent data with data from prior years (dating back to 1999) to support

identifying system needs and transportation solutions as well as monitoring of impacts of implemented improvements. (Summer 2022)

- An updated annual Congestion Management Report (Summer 2022).
- Provide information to Federal Highway Administration to help in FHWA’s assessment of the Congestion Management Process. *(As needed)*
- Communicate with Metro on RTC’s Congestion Management Process and keep informed on development of Metro's Congestion Management Process. *(Ongoing)*
- Plan for regional freight and commercial needs including data collection and reporting. *(Ongoing)*

IC.(i) FY 2023 Funding: Congestion Management Process

<u>FY 2023 Revenues:</u>		<u>FY 2023 Expenses:</u>	
	\$		\$
• Federal FHWA PL	\$40,938	• RTC	\$69,361
• Federal STBG	\$28,500		
• Federal FTA	\$12,183	Consultant	\$25,000
• State RTPO	\$10,570		
• Local MPO Funds	\$2,170		
	\$94,361		\$94,361

Federal Program Funds matched by State RTPO, and/or local MPO Funds and/or Toll Credits

IC.(ii) FY 2023 Funding: Transportation Data Study (and Data Acquisition)

<u>FY 2023 Revenues:</u>		<u>FY 2023 Expenses:</u>	
	\$		\$
• Federal STBG	\$300,000	• RTC/Consultant	\$346,821.
• Local MPO Funds or Toll Credits	\$46,821		
	\$346,821		\$346,821

Federal Program Funds matched by State RTPO, and/or local MPO Funds and/or Toll Credits

*Average annual cost for consultant assistance for traffic data collection e.g. traffic counts, travel time and speed, auto occupancy and vehicle classification data. Consultant is hired on a 3-year contract.

1D. VANCOUVER AREA SMART TREK PROGRAM

The Vancouver Area Smart Trek (VAST) program encompasses the ongoing coordination and management of regional Transportation System Management and Operations (TSMO) and Intelligent Transportation System (ITS) activities. The VAST program, which focuses on ITS planning, projects and infrastructure, has been managed by RTC since its inception in 2001.

The TSMO Plan guides the implementation of operational strategies and supporting Intelligent Transportation Systems (ITS) technologies for Clark County and presents a strategic framework for accomplishing transportation system management objectives. It also supports future ITS technology investments and capital improvements necessary to accomplish those objectives. RTC published the first VAST TSMO Plan in 2011 as well as an update to the plan in 2016. The original plan provided a 10-year vision; the 2016 Plan update provides a 5-year view that better reflects both the nature of TSMO strategies as viable near-term solutions to operational deficiencies as well as the rapid evolution of ITS technologies and operations practices.

The Vancouver Area Smart Trek Program is a coalition of state, regional and local agencies working together to implement Intelligent Transportation Systems (ITS) and operational solutions to address the region's transportation needs. Partners in the coalition include the City of Vancouver, Washington State Department of Transportation (WSDOT), Clark County, C-TRAN, and RTC. The Program has proven to be an effective way for agencies to coordinate and partner on ITS and operational project development and delivery, with successful funding outcomes, monitoring of project development, and project integration.

Transportation System Management and Operations

TSMO focuses on low-cost, quickly implemented transportation improvements aimed at making the most efficient use of existing transportation facilities. Benefits include a more reliable transportation system, reduced delay, and better incident response. TSMO relies on the use of intelligent transportation system (ITS) initiatives and devices which combine advanced technologies, operational policies and procedures, and existing resources to improve coordination and operation of the multimodal transportation network. Examples include active traffic management on freeways, smart arterial traffic signals, integrated signal systems, access management, traveler information, active transit technology, and coordinated incident response to make the transportation system work better.

While there is no single solution to transportation deficiencies, TSMO is one of the tools to manage congestion, and improve the safety, security and efficiency of the transportation system. It is a key regional strategy for managing traffic congestion and for addressing transportation system capacity needs where additional highway expansion and/or capital resources are constrained. Currently, TSMO efforts in the region include the following: 1) the continued implementation of the TSMO Plan as a low capital-cost approach to meeting the region's transportation needs, 2) ensuring ITS and TSMO project consistency with the Regional Intelligent Transportation System Architecture, and 3) enhancement and utilization of the Portal data element.

The Clark County TSMO Plan provides a strategic framework to guide transportation system management objectives. The Plan builds upon a proven reputation of success and national leadership

in interagency coordination. It informs future ITS technology investments and capital improvements necessary to support the objectives over the next 10 years. The 2016 TSMO Plan update has three main sections: 1) emerging operational issues and trends that impact the future direction of transportation systems management and operations; 2) a description of operational and technology improvements on the transportation system since the 2011 TSMO Plan and; 3) an implementation plan, which documents the ITS communications and equipment needed to build planned improvements and support system management and operations.

The regional transportation data resources developed under this element provide a means for tracking congestion and supporting the Congestion Management Process using TSMO performance metrics for recurring and non-recurring congestion. Use of Portal is a key component. Portal is the official transportation archive for the Portland-Vancouver metropolitan region and is housed at the Intelligent Transportation Systems Laboratory at Portland State University (PSU). Portal serves the U.S. National ITS Architecture's Archived Data User Service in the Portland-Vancouver region. PSU works cooperatively with regional partners including WSDOT, Clark County, C-TRAN, ODOT, Metro, the City of Portland, TriMet, and RTC. Currently, the Portal system archives a wide variety of transportation-related data including information from freeway loop detectors, arterial devices, weather sensors, incident data, transit data, travel time from Bluetooth readers and other roadway detectors, and vehicle length. There are plans to enhance Portal to improve the user interface and expand the capabilities of the system to include other multimodal data sources such as, expanded transit data, and bicycle-pedestrian data from both Oregon and Washington.

Intelligent Transportation Systems

The VAST program addresses the sharing, maintenance, and standards for communications infrastructure and equipment. The ITS element of the VAST Program will continue its focus on ITS, communications and the associated infrastructure and technology. The VAST program encompasses ITS and communications infrastructure as well as ITS technologies for integration of transportation information systems, management systems and control systems for the urbanized area of Clark County.

Regional ITS Architecture Study

The Regional Architecture was updated in FY2022 and includes an assessment of ITS existing conditions, a user needs assessment, and an ITS Architecture service packages and database using ARC-IT 8.3, identification of future ITS projects and an action plan for a system management and operations program.

Work Element Objectives: VAST

- Address the use of ITS technology through collaboration between planning and traffic operations staff of partner agencies as part of the consolidated VAST program which incorporates ITS and operational management into the planning process.
- Lead the ongoing management of the VAST Program, including the development of collaborative project funding applications and coordination between partner agencies on operational projects and ITS technology. Continue management of the TSMO Steering Committee, the VAST Steering Committee and Communications Infrastructure Committee. VAST program management

includes review and endorsement of ITS and communications infrastructure improvements, as well as operational projects, development of ITS and operations policies, preparation of joint funding applications, and managing consultant technical support for the VAST program.

- Ongoing planning, coordination and management of the VAST program to ensure the region is meeting federal requirements for ITS deployment through integration and interoperability.
- Ensure that operational and ITS initiatives are integrated and that consistency with the regional ITS architecture is addressed.
- Maintain the Regional ITS Architecture in support of the VAST Agency Partners. Work to ensure the region is compliant with USDOT ITS Architecture requirements.
- Continue to develop and implement VAST program projects programmed for Congestion Mitigation/Air Quality (CMAQ) funding in the Transportation Improvement Program. These VAST projects may include freeway management, traveler information, transportation signal optimization, and transit signal priority.
- Assist partner agencies on funding applications for individual operational and ITS projects. Continue process of Committee partnerships for joint project funding applications.
- Focus on performance measurement, metrics, and tools to analyze the benefits of operational strategies and outreach to policy makers and other stakeholders.
- Utilize the Action Plan from the Regional ITS Architecture update to advance emerging issues and guide the planning efforts of the VAST agencies on issues including connected and autonomous vehicles, smart cities, and open and integrated data.
- Review Smart Community Assessment recommendations to consider next steps to implement strategies to advance smart technology deployment in the region.
- Collaborate with TSMO Steering Committee members to provide technical support for operational strategies and coordinate regularly with TSMO partners to develop guidelines and protocols for regional operations. Performance measures will be further developed for assessing operations and identifying effective TSMO strategies.
- Work with partner agencies for ongoing refinement of the Portal interface to improve its interface and usability. Improvements to the Portal data archive are defined in the annual data archive scope of work with PSU and include adding data sources for arterials, display of new transit data, freight information, travel time and identification of field device types and their data collection capabilities. RTC will coordinate with partner agencies as they begin to utilize the data archive.
- RTC participation on the Portal Advisory Committee which is the regional maintenance and development forum for the ongoing management and maintenance of the Portal data archive.
- Continue development of standards for fiber optic communications, equipment, and infrastructure through the VAST Communications Infrastructure Committee (CIC). Maintain and continue expansion of the multi-agency shared asset management database and mapping system and facilitate the ongoing development of asset sharing and execution of permits between the VAST agency partners.
- Continue collaboration on OSPInSight, the new cloud-based mapping software tool, as the shared approach for management of VAST fiber and communication assets.

- Expand areas of communications infrastructure sharing and integration authorized under the executed Regional Communication Interoperability and Fiber Interlocal Agreement.
- Develop rules, procedures and process, and security issues among VAST partners and agree on a common protocol for VAST to receive detailed communications infrastructure information from agency construction projects.
- Identify additional areas for coordination and improvement of the communications infrastructure, including coordination of construction, management and maintenance of communications infrastructure for VAST member agencies.
- Provide a forum to host periodic VAST program events to promote regional discussion and education on TSMO and transportation technology issues.

Relationship to Other Work Elements: VAST

The VAST work program is the operations element of the Regional Transportation Plan; the region's long-range plan. Operational strategies are identified in the RTP and are programmed for funding in the region's TIP. The TSMO Plan serves to define operational improvement strategies and development of the metrics for measuring performance. The transportation data archive element also feeds into and supports the Congestion Management Process (CMP). The CMP identifies regional transportation needs that can be addressed through application of TSMO strategies.

FY 2022/2023 Tasks and Products: VAST

- Coordinate all VAST activities within Clark County and with Oregon. *(Ongoing)*
- Facilitate the activities of the three VAST related committees. *(Ongoing)*
- Report on the overall effectiveness of the VAST program. *(Ongoing)*
- Maintain the Regional ITS Architecture for the VAST program. *(Ongoing)*
- Incorporate the connected and autonomous vehicles element into the next Regional ITS Architecture update.
- Implement ITS technologies and operational strategies on the TSMO corridor(s) within the budget available. *(Ongoing)*
- Determine need for the development of regional policies for the consideration of operational strategies.
- Update and expansion of Portal to include more partner agencies. Collaboration with partner agencies will also address ongoing refinement of Portal to improve data quality, visual interface and usability. *(Ongoing)*
- Manage the ITS element of the work program, including preparation of memoranda of understanding for coordinated ITS implementation, interlocal agreements, and operational and maintenance agreements, fiber sharing permits and other coordination needed between partner agencies to deploy ITS projects. *(Ongoing)*
- Develop policies for operational requirements, acceptable use, security and other policies for the shared ITS network. *(Ongoing)*
- Build-on addition of Clark County onto the bi-state regional ITS network by expanding the number of VAST agencies using it to send real-time data to the Portal data archive.

- Prepare and publish the 2022 VAST Annual Report to summarize key 2022 accomplishments and recurring, recent and upcoming activities of the program.
- Update, maintain and utilize the database as new fiber projects are completed. *(Ongoing)*
- Adopt standards for fiber, equipment, and infrastructure based on priorities set by the Communications Infrastructure Committee. *(Ongoing)*
- Regional ITS goals and policies for the Clark County region and for bi-state ITS issues. *(Ongoing)*
- Manage consultant technical support activities. *(Ongoing)*

FY 2023 Funding: VAST Program

1D. VAST PROGRAM FUNDING

<u>FY 2023 Revenues:</u>		<u>FY 2023 Expenses:</u>	
	\$		\$
• Federal STBG	\$375,000	• RTC	\$303,526
• Local MPO Funds or Toll Credits	\$58,526	• Consultants*	\$130,000
	\$433,526		\$433,526

Federal Program Funds matched by State RTPO, and/or local MPO Funds and/or Toll Credits

*Consultants estimated \$130,000 per year for consultant program assistance from DKS and Portland State University Portal

1E. SKAMANIA AND KLICKITAT RTPO

The regional transportation planning work program for Skamania and Klickitat Counties was established in FY 1990 when RTC was designated as the Regional Transportation Planning Organization (RTPO) for Clark, Skamania and Klickitat counties. The Skamania County and Klickitat County Transportation Policy Committees meet regularly to discuss regional transportation issues and concerns. RTC provides transportation planning technical assistance for each County in addition to developing Regional Transportation Plans and monitoring transportation system performance. The Skamania County and Klickitat County Regional Transportation Plans were initially adopted in April 1995 with the most recent updates adopted in November 2018. Development and traffic trends are monitored and the regional transportation planning database for the region is kept up to date.

Work Element Objectives and Activities: Skamania and Klickitat RTPO

- Conduct a regional transportation planning process.
- Ensure that Regional Transportation Plans are reviewed regularly and opportunity for regular update, if needed, is provided.
- Gather growth and development data to reveal trends to report in the Regional Transportation Plan update.
- Develop and update the regional transportation database.
- Review plans of local jurisdictions for consistency with the Regional Transportation Plans and Washington's Transportation Plan (WTP).
- Continue transportation system performance monitoring program.
- Assist counties in implementing the current federal transportation act. This will include continued assistance in development of federal and state-wide grant applications, and development of the Regional TIP.
- Continue assessment of public transportation needs, including specialized human services transportation. Work with regional partners in coordinating with Gorge TransLink, an alliance of transportation providers offering public transportation services throughout the Mid-Columbia River Gorge area as well as to destinations such as Portland and Vancouver. These transportation services are available to everyone regardless of age or income.
- Assist partner agencies in conducting regional transportation planning studies.
- Coordinate statewide transportation planning efforts with regional transportation planning efforts.

Relationship to Other Work Elements: Skamania and Klickitat County RTPO

The RTPO work program for Skamania and Klickitat Counties is tailored to the counties' specific needs and issues and, where applicable, coordinated across the RTPO region and with bi-state partners in Oregon.

FY 2023 Tasks and Products: Skamania and Klickitat RTPO

- Continued development of a coordinated, technically sound regional transportation planning process. *(Ongoing)*

- Continued development of a technical transportation planning assistance program. *(Ongoing)*
- Development of the 2023-2026 Regional Transportation Improvement Program. *(Fall 2022)*
- Update to the Regional Transportation Plans. *(2022)*
- Provide technical support needed for the Hood River Bridge Replacement Project.
- Gather data and update the regional transportation database. *(Ongoing)*
- Regional freight and commerce planning and data collection and reporting. *(Ongoing)*
- Update Human Services Transportation Plan *(2022)*

FY 2023 Funding: Skamania and Klickitat RTPO

FY 2023 Revenues:

	\$	
• State RTPO	\$42,279	
	\$42,279	

FY 2023 Expenses:

	\$	
• RTC	\$42,279	
	\$42,279	

1F. HUMAN SERVICES TRANSPORTATION PLAN UPDATE

Regular update of the region's Coordinated Human Services Transportation Plan (HSTP) continues to be a requirement of the federal transportation act. The intent of the Human Services Transportation Plan is to identify transportation needs and solutions and thereby improve transportation services for people with disabilities, seniors, and individuals with lower incomes as well as those in rural locations who cannot provide transportation for themselves. The current HSTP was adopted in November 2018. From the needs identified in the HSTP, human services transportation providers can then develop projects to submit to WSDOT for funding consideration through the consolidated public transportation grant program. Development and update of an HSTP is a condition for receiving Federal Transit Administration Section 5310, Enhanced Mobility of Seniors and Individuals with Disabilities program, funds. In Washington State, the Consolidated Grant Program combines applications for FTA 5310 funds as well as FTA Section 5311, Formula Grants for Rural Areas, and FTA 5339(a), Grants for Buses and Bus Facilities Formula Program, and Washington State Paratransit/Special Needs and Rural Mobility formula grants. Projects funded under the Consolidated Grant Program must be derived from a locally developed public transit-human services transportation plan. The MPO/RTPO must work with the local stakeholders and human service transportation providers to develop the Plan and prioritize projects.

Work Element Objectives

- Keep the consolidated Human Services Transportation Plan for Clark, Skamania and Klickitat Counties updated.
- Coordinate and engage with stakeholders, the public and regional decision makers on human services transportation planning issues.

Relationship to Other Work Elements

The HSTP work element is related to the Regional Transportation Plan for Clark County, the Metropolitan Transportation Improvement Program for project programming, Coordination and Management, and the Skamania County RTPO and Klickitat County RTPO work elements.

FY 2022/23 Products

- An updated Human Services Transportation Plan for Clark, Skamania and Klickitat Counties to be adopted in 2022. A draft is to be made available by September 1, 2022 to allow applicants for Consolidated Grants to confirm projects fall under the priorities identified in the HSTP. The finalized HSTP update must be submitted to WSDOT Public Transportation Division online grant management system by December 1, 2022. A coordinated plan helps to enhance transportation access, minimize duplication of services, and encourage the most cost-effective transportation. Development of the Human Services Transportation Plan brings together service providers, agencies that distribute funds, riders, and the community at-large to improve special needs transportation throughout the region. Following guidance provided by WSDOT Public Transportation Division, the updated Plan should, at a minimum, include the following elements:
 - Contact information
 - Title VI and ADA statements
 - Conduct and document community outreach
 - Regional context – data and information on common trip origins and destinations

- Assessment of transportation services – existing transportation services; identify unmet transportation needs
- COVID-19
- Strategies and activities to address gaps – include technology and community project priorities
- Regional priorities for implementation
- Ongoing coordination (optional)
- The updated HSTP will be used as the basis for applying for funds through the state’s Consolidated Public Transportation Grant Program to meet the transportation needs of people with disabilities, seniors, individuals with lower incomes as well as those in rural locations who cannot provide transportation for themselves.
- Outreach, engagement and coordinate with stakeholders; the key to successful human service transportation planning. Primary stakeholders include public transportation providers in the region such as C-TRAN, Skamania County Senior Services, and Klickitat County Senior Services. Additional stakeholders include the Area Agency on Aging and Disabilities of Southwest Washington, assisted living communities, city councils, community action programs, community colleges, County Councilors and Commissioners, disability organizations, DSHS, foundations, group homes, hospitals and other health care providers, local Medicaid brokers and/or providers, local school districts, major employers or employer organization, non-profit transportation providers, organizations that service low income people, other non-profit organizations, nursing homes, private bus operators, public transit districts, Retired Senior Volunteer Program, senior centers, student/teen organizations, taxicab operators, tribal governments and work-first local planning area representatives. Notable opportunities to engage with local stakeholders in the region include with Gorge Translink for the Columbia Gorge area, with C-TRAN Citizens Advisory Committee, with Clark County’s Commission on Aging (report published February 2012 and Transportation Report in 2018), the Southwest Washington Healthy Living Collaborative and through the region’s Accessible Transportation Coalition Initiative (ATCI) hosted by Community in Motion.
- Coordinate with regional decision-makers through the Accessible Transportation Coalition Initiative (ATCI), Klickitat County Transportation Policy Committee, Skamania County Transportation Policy Committee, the Regional Transportation Advisory Committee in Clark County and the RTC Board of Directors.
- Continue to coordinate with Washington State Department of Transportation (WSDOT) to learn of funding opportunities, data availability and statewide decision-making regarding special needs transportation.

FY 2023 Funding: Human Services Transportation Plan

<u>FY 2023 Revenues:</u>		<u>FY 2023 Expenses:</u>	
	\$		\$
WSDOT	<u>\$20,000</u>	RTC	<u>\$20,000</u>
Total	<u>\$20,000</u>		<u>\$20,000</u>

1G. INTERSTATE BRIDGE REPLACEMENT PROJECT: TECHNICAL SUPPORT

In its role as the MPO and as a NEPA co-lead agency, RTC is committed to providing significant staff time and resources to the IBR effort. This includes participation in a wide range of technical and policy working groups whose responsibilities could include developing data, providing inputs, technical document review, and providing advice regarding community and advisory committee engagement. Specific project workgroups where RTC will be engaged include:

- Communications and Advisory Committee workgroups
- Regional Travel Demand Modeling workgroup
- Transportation Planning workgroups
- NEPA technical workgroups

RTC has collaborated with WSDOT and the IBR Project team to define those areas where support for the project is needed and have developed a scope of work for technical analysis, travel forecasting and other support services for the project up through alternatives analysis and the initiation of the final SEIS. The proposed agreement with WSDOT for technical assistance and policy support to the IBR project is scheduled to go through the end of 2023, and the Scope and Funding Plan may be amended in 2023, to reflect new activities and resources.

Work Element Objectives: Interstate Bridge Replacement Project: Technical Support

- The purpose of the IBR Technical Support effort is to assist in all the project tasks. Additionally, as the MPO for Clark County, with responsibility for bi-state coordination and regional planning, RTC will provide significant support for transportation planning/travel forecasting and transit planning tasks for the project.
- Act as the lead agency for Clark County IBR partners in support of the travel demand development, network definition and analysis.
- Assist the IBR team and project partners through the completion of the alternatives analysis in preparation for entry into a Supplemental EIS.
- Coordinate with the IBR team and project partners to satisfy the requirements of the FTA Capital Investment Grant (CIG) process; assist in developing and screening multi-modal transit alternatives.

Relationship to Other Work: Interstate Bridge Replacement Project: Technical Support

Replacement of the I-5 bridge over the Columbia River is identified in the Regional Transportation Plan and also supported by several recent policy resolutions adopted by the RTC Board of Directors.

FY 2022/23 Tasks and Products: Interstate Bridge Replacement Project: Technical Support

- **Project Management and Coordination.** This task includes budget, scope and schedule. It also includes project management team meetings, technical advisory committee meetings and agency stakeholder meetings.
- **Project Administration:** RTC staff will participate in project-related team meetings consistently during the project, including weekly 2-hour Staff Level Group meetings, monthly Executive Steering Group meetings, bi-weekly Community Advisory Group meetings, and bi-weekly Equity Advisory Group meetings. RTC staff will regularly brief RTC executives in preparation for

Executive Steering Group meetings and will participate in IBR Working Groups as appropriate. Work under this task will include support for related IBR efforts including any needed assistance of expert review panels and intergovernmental relations.

- **Project Controls:** RTC will communicate key schedule, budget, and other issues to support Project Controls. A small amount of time is assumed for outreach support, schedule management, progress reports, invoicing and supporting the project management plan.
- **Financial Structures:** RTC will participate in and provide review of financial structures. RTC will assist in developing project methodologies, analysis approaches and criteria in the discussion and resolution of policy issues which could include: tolling and finance institutional structures and the identification of critical issues; tolling on I-5 and I-205; attributes of a bi-state, multipurpose transportation authority; finance mechanisms, and travel and regional policy effects of IBR tolling and the Oregon Regional toll project.
- **Communications:** RTC staff will coordinate with IGA program communications staff to align on program communications on program activities and milestones. RTC staff will provide support and staffing for public meetings and public outreach activities as applicable, including meetings with neighborhoods and interest groups as needed and appropriate. RTC staff will lead communications efforts with RTC boards and committees and promote IBR program communications through existing RTC communications channels.
- **Transportation Planning:** RTC staff will be a key participant in the development of the IBR methods and assumptions document, including study area, guiding regulations, time periods and years analyzed, traffic and transit data needs, assessment methods, travel demand modeling and post-processing, tolling, traffic operations, and safety analysis. RTC will coordinate with Clark County IBR partners on assumptions for transportation demand management, provide information on the Congestion Management Process, and other transportation related inputs for the project.

Provide input and review of alternatives in relation to applicable metropolitan and regional transportation planning regulations and procedures as administered by RTC; and provide existing available data (2019 Regional Transportation Plan Update and 2045 travel model outputs) in coordination with Metro to support the travel demand traffic operations and safety analysis. RTC will compile and provide other requested data as needed for the project team.

Participate with the Travel Demand Model Coordination team to ensure that the transportation demand model is developed based on commonly agreed upon inputs (land use, transit and highway networks, and transportation system operational data) for the existing and future traffic.

Act as Clark County lead for the travel demand development which includes: land use allocations; information that supports the transportation analysis for the initial range of multi-modal alternatives for the IBR Program; preparation of the Clark County future year project list, travel demand methodologies, inputs to the travel demand model including highway and transit network coding, network review, and development of other necessary model inputs; and assistance in post-processing of model results as needed to support the IBR project team.

- **Environmental:** RTC IBR Lead will coordinate participation in the IBR environmental process to include attendance at Agency Coordination Group (ACG) meetings. Participation in ACG includes assisting in the development and/or review of the following activities: Purpose and Need and

Vision and Values; Methods and Data Report; Alternatives Screening Report; Existing Conditions Report; Permitting Plan.

- Transit Planning/Engineering:** This task is to advance the IBR multi-modal transit alternatives. Major elements include: satisfying the requirements of the FTA Capital Investment Grant (CIG) process, and developing and screening multi-modal transit alternatives down to approximately 3-5 to advance to detailed analysis, and providing collaborative technical support to other tasks. Key activities include:

FTA Coordination: Work with FTA and the IBR project partners to determine the appropriate FTA grant program potential transit alternatives are qualified for and coordination with RTC member agencies and local jurisdictions to get feedback and ensure consensus on the CIG process and submittals; and assistance on other required submittals including the initial, detailed, and final definition of alternatives.

Transit Service Planning: Assisting C-TRAN and the project team to develop transit background and feeder networks for the transit alternatives. Elements will include transit routing, headways, transfer locations, bus speeds and dwell times for transit alternatives regional travel modeling.

Transit Conceptual Engineering: Assist in the development and review of the purpose and need, evaluation methodology and screening criteria for the transit alternatives; in the development of the initial range of transit options; review and input on the transit engineering work including capital costs and assumptions through the Project Development Team and the Design and Transit Working Groups.

- Design Engineering:** RTC staff will participate with IBR in the development and review of conceptual alternative plans, applying local and regional knowledge to provide feedback on elements to include highway, fixed guideway and structures.

FY 2023 Funding: Interstate Bridge Replacement Project Technical Support

<u>FY 2023 Revenues:</u>		<u>FY 2023022 Expenses:</u>	
• WSDOT funds	\$ \$200,000	• RTC	\$ \$200,000
	\$200,000		\$200,000

2. DATA MANAGEMENT, TRAVEL FORECASTING, AND TECHNICAL SERVICES

2A. DATA MANAGEMENT, TRAVEL FORECASTING, AND TECHNICAL SERVICES

This element includes the development, maintenance and management of the regional transportation database and website to support the regional transportation planning program. The database is used to monitor transportation system performance, evaluate level of service standards and for calibration of the regional travel forecasting model. The element also includes development and use of the regional travel forecasting model to estimate and analyze future transportation needs, air quality planning, and technical support to local jurisdictions.

Regional Transportation Data and Travel Forecasting

(a.1.) Regional Transportation Data: Work Element Objectives

- Provide data and mapping to support regional transportation planning activities such as development of regional plans, regional travel forecast model development and in map-making. Maps are used by RTC as visualization tools to help make transportation plans more understandable.

(a.2.) Regional Transportation Data: FY 2023 Tasks and Products

- Update the regional transportation database and mapping with data from sources such as the U.S. Census, including Census Transportation Planning Products (CTPP) and the American Community Survey (ACS), as well as the National Household Travel Survey (NHTS). The regional transportation database also includes functional classification of roadways, travel behavior survey data, and County GIS information, traffic counts, transit ridership and transit-related data provided by C-TRAN. (Ongoing)
- Compile crash data for use in development of safety management plans and project priorities.
- Analysis of Clark County transportation information. The main elements include: transportation measures, use of highway by travel length, peak spread, transit related data and information, and work trip analysis. Trip analysis and travel time calculations are used to address environmental justice issues. (Ongoing)
- A project database with completed and planned transportation projects is developed and will continue to be updated. The project database is designed to complement the TIP and RTP work elements. Initially, the database includes information on the STBG and CMAQ funded projects and is planned to include all proposed RTP projects to enable information and data retrieval for these projects. The intention is to make the project information easily accessible on RTC's website.
- Update the region's Demographic Profile report following release of 2020 Census data. This will include compilation and analysis of data relating to minority and low-income populations to support transportation plans for the region, plans for specific corridors, and for specific Title VI requirements. (Ongoing)
- Analyze growth trends and relate these trends to future year population and employment forecasts. Demographic forecasts for the region are analyzed and used as input for the regional travel forecast model. RTC reviews Clark County-produced region-wide growth totals for population, households and employment allocated to Clark County's transportation analysis

zones (TAZs) and incorporates these assumptions into the regional travel model. The TAZ allocation is used by RTC in the travel forecast modeling process.

- Assist local jurisdictions in analyzing data and information from the regional transportation database in updating and implementing Comprehensive Plans required under the state's Growth Management Act, capital facilities plan development and transportation concurrency.
- Continue to integrate transportation planning and GIS data using Arc GIS PRO and work with County GIS Department to incorporate and use GIS data in the County's ArcGIS system. Clark County's Maps Online and GIS Workbench is used as a resource by RTC to obtain layers of information such as zoning, comprehensive plan, service district boundaries, and geophysical and environmental elements such as stream channels, floodplains, hydric soils, shoreline buffers, watersheds, and groundwater protection areas, slopes and geologic hazards. These layers of information are used by RTC in considering environmental mitigation in the regional transportation planning process. (Ongoing)
- Coordination with Clark County jurisdictions on maintenance and update of the highway network, local street system and federal functional classification system in a GIS coverage. (As needed)
- Update the region's traffic count database. (Ongoing)
- Continue to work with regional bi-state partners on freight transportation planning including ongoing work to improve truck forecasting ability. Continue to integrate freight traffic data into the regional transportation database. (Ongoing)
- Use the regional Economic Value Atlas (EVA) tool, developed by Metro and the Brookings Institution, to assist in the analysis of data and information to help transportation planning efforts, especially as transportation investments relate to economic development issues.
- Regularly update the content of RTC's website as the region's primary public participation, information and outreach platform allowing public access to the regional transportation planning program. The RTC website is a valuable tool for both disseminating information and receiving feedback from the public, as well as the RTC Board and its member jurisdictions. RTC will continue to maintain the RTC website providing current data and information in order to inform and engage the public in the transportation planning process.
- Maintain and update RTC's computer equipment and software. Ensure that the MPO/RTPO computer system is upgraded when necessary to include new hardware and software to allow for the regional transportation planning program to be carried out efficiently. Provide computer training opportunities for MPO/RTPO staff. Purchase updated computer equipment using RTPO revenues and coordinate with the County's computer division to update computer equipment and software.

(b.1.) Regional Travel Forecasting Model: Work Element Objectives

- Coordinate with local jurisdictions, state agencies and Metro to develop the regional travel forecast model. The travel forecast model is used as a tool to help analyze the transportation system in the region; its output used to identify deficiencies in the regional transportation system, to develop performance measures and standards and to assess transportation demand management and transit planning applications.
- Increase the ability of the existing travel forecasting procedures to respond to informational

needs placed on the forecasting process to inform state, regional and local transportation planning. The transportation model needs to be able to respond to emerging issues including: concurrency, peak hour spreading, latent demand, design capacity, performance measures, air quality, growth management, and life-style changes.

- Provide a forum for local model developers and users to meet and discuss model development and enhancement.
- Assist WSDOT and local agencies by supplying regional travel model data for use in local planning studies, environmental analyses, development reviews, capital facilities planning and transportation impact fee program updates.

(b.2.) Regional Travel Forecasting Model: FY 2023 Tasks and Products

- Continue to coordinate with Metro on use and development of Metro's regional model and to ensure input model data, including census demographic data and land uses, are current. RTC will work with Metro to refine travel forecast methodology using EMME and will continue to work with Metro to assess the most useful modeling tools for use in the region. RTC will also coordinate with Metro in updating the regional travel forecast model code and structure, as needed. (Ongoing)
- Staff will continue to research and assess travel forecast model enhancement and enhanced modeling software and tools to further develop traffic operational modeling capabilities and true dynamic assignment techniques that are increasingly important in evaluating new planning alternatives, such as High Occupancy Vehicle operations and impacts, Intelligent Transportation System impact evaluation, congestion pricing analysis, and concurrency analysis.
- Use regional travel forecasting model data to support RTC's RTP implementation and TIP development, development of state multimodal plans and support for corridor planning studies and local sub-area modeling, Transportation System Management and Operation (TSMO) applications, and C-TRAN's 20-year Transit Development Plan. (Ongoing)
- Analysis of Commute Trip Reduction (CTR), congestion pricing and Transportation System Management/Intelligent Transportation System (ITS) impacts. (As needed)
- In FY 2023, RTC will coordinate with Metro to update the regional model base year to 2020. Model networks for 2020 will be produced along with new 2020 land use data to serve as inputs. Base year model calibration and validation will be completed.
- Participate in the Oregon Modeling Steering Committee (OMSC), organized as part of the Oregon Travel Model Improvement Program (OTMIP), to keep informed about model development in Oregon and the Portland region.
- Re-calibration and validation of regional travel forecast model. (As needed)
- Review and update of model transportation system networks, including highway and transit. (Ongoing)
- Provide WSDOT and local jurisdictions with transportation model data and analysis to support project design and implementation.
- Documentation of regional travel forecasting model procedures. (Ongoing)
- Continue implementation of interlocal agreements relating to use of RTC's regional travel

forecast model and implementation of sub-area modeling. (As needed)

- Host Transportation Model Users' Group (TMUG) meetings. (As needed)

Air Quality Planning: Introduction

In an effort to improve and/or maintain air quality, the federal government enacted the Clean Air Act Amendments in 1990. RTC's region is now in attainment status for both Ozone and Carbon Monoxide (CO). Under both the 1997 and 2008 Ozone National Ambient Air Quality Standards (NAAQS), the Vancouver/Portland Air Quality Maintenance Area (AQMA) is designated as in "attainment" for Ozone. With the revocation of the 1-hour Ozone NAAQS on June 15, 2005, regional emissions analyses for ozone precursors in RTC's Plan (RTP) and Program (TIP) were no longer required.

For Carbon Monoxide (CO) NAAQS, the Vancouver AQMA was redesignated to attainment with an approved 10-year maintenance plan in 1996. In January 2007, the Southwest Clean Air Agency submitted a CO Limited Maintenance Plan (LMP) to the Environmental Protection Agency (EPA) for the second 10-year period. The EPA approved this LMP the following year. Based on the population growth assumptions contained in the Vancouver Limited Maintenance Plan (LMP) and the LMP's technical analysis of emissions from the on-road transportation sector, it was concluded that the area would continue to maintain CO standards. As of October 21, 2016, the Vancouver AQMA successfully completed the 20-year "maintenance" period and is no longer required to make a conformity determination.

(c.1.) Air Quality: Work Element Objectives

- Monitor federal guidance on the Clean Air Act and state Clean Air Act legislation and implementation of requirements. This includes addressing any issues concerning attainment status for Carbon Monoxide (CO) for the Vancouver Air Quality Maintenance Area and the "attainment" area for ozone based on the EPA's eight-hour ozone standard.
- Address air quality and greenhouse gas policy state and federal directives. Cooperate and coordinate with State Department of Ecology (DOE) in research and work on air quality in Washington State and provide support for the Governor's Executive Order 09-05 and RCW 80.80, RCW 70.235.020 and RCW 47.01.440 relating to climate change, greenhouse gas and Vehicle Miles Traveled reduction goals. RTC is one of the four affected RTPOs in Washington State required to collaborate and engage with Washington State Department of Transportation (WSDOT) to implement Sections 2a and 2b of Governor's Executive Order 09-05 – Washington's Leadership on Climate Change. (Ongoing)
- Coordinate with Southwest Clean Air Agency (SWCAA) depending on current air quality laws and air quality status. RTC's responsibilities include, if needed, transportation emissions estimates, and conformity determination for regional plans and programs and for adoption of TCMs for inclusion in the MTP and TIP.

(c.2.) Air Quality Planning: FY 2023 Tasks and Products

- Consult with local agencies, WSDOT, DOE, EPA, SWCAA, Metro and Oregon Department of Environmental Quality on emerging issues related to air quality and transportation, including any new regulatory requirements regarding air quality or conformity.

- Work to support RCW 80.80 relating to climate change and greenhouse gas reduction including Vehicle Miles Traveled (VMT) and VMT per capita in the region. Also address Governor's Executive Order 14-04 and the requirements in RCW 47.01.440 relating to statewide reductions in vehicle miles traveled (VMT), RCW 70.235.020 and chapter 173-441 WAC relating to limiting and reporting of greenhouse gas (GHG) emissions. (Ongoing)
- Although it is not mandatory, RTC will continue to coordinate and cooperate with air quality consultation agencies: DOE, EPA, Federal Highway Administration (FHWA), Federal Transit Administration (FTA), WSDOT, and SWCAA when needed on any new regulatory and technical requirements that may affect the AQMA as well as emerging issues related to air quality and transportation such as potential PM2.5 conformity requirements. RTC will consult with the agencies if requested in the review, update, testing, and use of the Motor Vehicle Emissions Simulator emissions (MOVES) model to ensure accuracy and validity of model inputs for the Clark County region and consistency with state and federal guidance.
- Coordinate with Metro, as needed, to ensure collaboration on possible future conformity requirements and consistency of mobile emissions estimation procedures and air quality emissions methodology that uses the travel-forecasting model in the Portland bi-state region.
- Estimate air quality emissions impacts for projects proposed for funding by the Congestion Mitigation and Air Quality program through the TIP and for the annual CMAQ information report required by WSDOT Highways and Local Programs Division for submittal to FHWA.
- Provide technical support requested from local jurisdictions and agencies in the use of the EPA MOVES emissions model.

Transportation Technical Services

(d.1.) Transportation Technical Services Work Element Objectives

- Provide technical transportation planning and analysis services for member agencies and provide a common and consistent regional basis for analysis of traffic issues. Consistency is a key element in maintaining, planning for, and building an efficient transportation system which provides adequate capacity. Technical service activities are intended to support micro traffic simulation models, the input of population, employment and household forecasts, and the translation of land use and growth forecasts into the travel demand model. RTC staff will continue to provide requested transportation technical services related to the implementation of the cities' and County's Comprehensive Growth Management Plans, transportation elements and transportation capital facilities plans.

(d.2.) Transportation Technical Services: FY 2023 Tasks and Products

- Fulfill local jurisdictions' needs for travel modeling and analysis. (Ongoing)
- Use output from the regional travel forecast model in local transportation concurrency analyses. A regular travel model update procedure for base year and six-year travel forecast is established that can be used in concurrency programs. As part of the process, the travel model is used and applied in the defined transportation concurrency corridors to determine available traffic capacity, development capacity and to identify six-year transportation improvements. (As needed)

- Travel Demand Forecast Model Workshops will be organized and held as needed. Invitees will include staff of local agencies and jurisdictions. These will help to improve understanding of travel demand modeling issues and new advances to promote efficiencies in use of the model in our region. (As needed or requested)
- Use of model results for local development review purposes.
- Technical support for the comprehensive growth management planning process in the Clark County region. An updated Clark County Comprehensive Plan was adopted in June 2016. (Ongoing and as needed)
- Provide modeling and technical assistance to ODOT’s congestion pricing projects through the Project Modeling Group.
- Provide modeling support and technical assistance to WSDOT and ODOT as the Interstate Bridge Replacement Project continues.

Relationship to Other Work Elements: Data, Travel Forecasting, Air Quality and Technical Services

This element provides significant support for all of RTC’s regional transportation planning activities including developing visualization tools and materials to help make transportation plans more understandable. Output from the regional transportation database is used by local jurisdictions and supports development of the RTP, TIP, Congestion Management Process and Transit Development Plan. Traffic counts are collected as part of the Congestion Management Process and are coordinated by RTC. This is an ongoing data activity that is valuable in understanding existing travel patterns and future travel growth. The program is also a source of county-wide historic traffic data, and is used to calibrate the regional travel forecast model. Development and maintenance of the regional travel forecasting model is the key tool for long-range transportation planning.

FY 2023 Funding: Regional Transportation Data and Travel Forecasting

<u>FY 2023 Revenues:</u>		<u>FY 2023 Expenses:</u>	
	\$		\$
• Federal FHWA PL	\$204,691	• RTC	\$435,799
• Federal STBG	\$142,500	• Interlocal agreement with Metro for model development	30,000
• Federal FTA	\$60,915	• Computer Equipment	\$6,000
• State RTPO	\$58,133	<i>Purchase with RTPO funds</i>	
• Local MPO Funds	\$5,560		
	\$471,799		\$471,799

Federal Program Funds matched by State RTPO, and/or local MPO Funds and/or Toll Credits

2B. HOUSEHOLD TRAVEL SURVEY

The most recent household activity and travel behavior survey for Clark County was conducted during the fall of 2009. The 2009 survey consisted of a revealed preference survey based on a 24-hour household activity and travel diary. The survey provided data for the regional travel demand model, the assessment of current activity and travel patterns, and for the estimation of future activity and travel under various policy scenarios. The effort improved planners' and policy makers' abilities to evaluate impacts of future policies and actions on travel patterns and transportation facility use. Since the 2009 survey, the travel behavior and choices of Clark County residents have changed in response to quickly evolving technology, new travel options, changing demographics and societal trends necessitating an updated travel behavior survey.

As in past surveys in 1994 and 2009, RTC is working in coordination with Oregon partners, including Metro and ODOT, as the next Oregon Household Activity Survey (OHAS) is developed. This will ensure data compatibility in the bi-state region and will allow for joint model development and economics of scale. RTC staff is working with planning partners on both sides of the Columbia River on a project scope and schedule that will support fielding an updated household travel survey. RTC staff will be working closely with member jurisdictions during this project.

Work Element Objectives

- Conduct an updated activity-based travel survey to inform the regional transportation planning process and enable update and re-calibration of the regional travel forecasting model.
- The survey will provide data for the following travel modeling objectives:
 - To improve the conventional 4-step travel models (trip generation, trip distribution, mode split, and assignment).
 - To develop the tour-based travel models for estimating and predicting trip chaining behavior associated with congestion, fuel price increase, and mode choice.
 - To respond to differences in the local urban environment, such as street and sidewalk design, land use types, housing types, etc.
 - To measure the relationships between household characteristics and mode choices for transit planning and analysis.
 - To respond to the question of household location choices associated with life cycle, car ownership, mode choice, and other exogenous effects of transport cost and travel time changes.
 - To estimate car ownership and car utilization associated with congestion, road and fuel pricing, and air quality control.
 - To develop quantitative methods to respond to TDM actions, including issues of urban design effect, pedestrian, bike, and transit oriented environmental effect, and others.
- Use appropriate data collection techniques and equipment to collect data and possibly provide for the beginnings of a longitudinal panel survey which would allow for surveying over time to maintain a survey pulse to determine the effects of a rapidly changing transportation environment.
- Provide a comprehensive picture of household travel to give decision makers and planners an understanding of current regional travel patterns and behaviors. Data may include number of daily trips per person or household, trip lengths by trip purpose for residents in rural or urban

areas, trip mode choice for destinations, travel choice differences based on household size, income, age, number of vehicles available, presence of children, and residential location, change in travel behavior over time.

- Provide policy and decision makers with the most up-to-date understanding of the region’s travel patterns and travel choice behavior of residents to enable informed investment decisions.

Relationship To Other Work Elements

Information from the travel activity and behavior survey is used to develop the regional travel forecast model to support regional transportation planning.

FY 2022/23 Tasks and Products

- Work with OHAS and survey consultant on survey approach. Survey methods and instruments have changed significantly since the 2009 survey effort and challenges in recruiting participants have grown. (winter 2021).
- Preparation for the travel behavior study likely to be fielded in 2023 with field testing in 2022.
- Develop a sampling approach and Clark County geographical strata. (Summer2022)
- Implement optimum public relations strategies for the activity survey before fielding. (Winter 2022)
- Fielding of the travel and activity-based survey (Spring – Fall 2023).
- Monitor the progress of the activity survey and continue to communicate with the survey consultants and local jurisdictions.
- Examine and validate the survey data set and finalize the final survey report. (Winter 2023)

FY 2022/23 Funding: Household Travel Survey

<u>FY 2022/23 Revenues:</u>		<u>FY 2022/23 Expenses:</u>	
	\$		\$
Federal STBG	\$450,000	RTC and Consultant	520,231
Other Local Funds or Toll Credits	\$70,231		
Total	<u>\$520,231</u>		<u>\$520,231</u>

Federal STBG funds are programmed in the TIP for the Clark County travel survey

3. TRANSPORTATION PROGRAM COORDINATION AND MANAGEMENT

3A. TRANSPORTATION COORDINATION AND MANAGEMENT

This element provides for overall coordination and management required of the regional transportation planning program. Ongoing coordination includes holding regular RTC Board and Regional Transportation Advisory Committee (RTAC) meetings. It also provides for bi-state coordination with Metro and ODOT to address both transportation and land use issues of bi-state significance. In addition, this Coordination and Management work element provides for public participation activities as well as federal and state transportation planning compliance.

a.1 Program Coordination and Management: Work Element Objectives:

- Coordinate, manage and administer the regional transportation planning program including coordination with transportation planning partners, representing RTC's interests at meetings of partner agencies and coordination with the congressional and legislative delegations on regional and bi-state transportation issues.
- Coordinate regional transportation planning with WSDOT as statewide transportation plans are developed and implemented and with local jurisdictions as Growth Management Act plans are updated and Transportation System Plans are developed and with the transit agency, C-TRAN.
- Consult with, communicate with, and outreach to tribes with interests in the 3-county region regarding transportation issues.
- Implement the current federal transportation act and monitor new legislative activities as they relate to regional transportation planning requirements.
- Conduct all regional transportation planning activities carried out by RTC and its staff in compliance with the Hatch Act that restricts the political activity of individuals principally employed by state, county or municipal agencies who work in connection with programs financed in whole or in part by federal loans or grants.

(a.2.) Program Coordination and Management: FY 2023 Tasks and Products

- Organize meetings and develop meeting packets, agenda, minutes, and reports/presentations for the RTC Board, Regional Transportation Advisory Committee (RTAC), Skamania County Transportation Policy Committee and Klickitat County Transportation Policy Committee. (Ongoing)
- Report to the Board and promote RTC Board interests on key transportation issues. These may include Federal Transportation Act implementation, livability, performance measures, legislation and planning regulations, and funding programs.
- Participate on regional and statewide transportation committees and advisory boards such as the Statewide MPO/RTPO Coordinating Committee, and specific modal plan studies as commissioned by WSDOT and other state agency partners.
- Provide leadership, coordination and represent RTC Board positions on policy and technical issues at Committee meetings within the Portland-Vancouver region. Specifically, the key committees include: C-TRAN Board, Metro's Joint Policy Advisory Committee on Transportation (JPACT), Metro's Transportation Policy Alternatives Committee (TPAC), Metro Joint MTAC/TPAC workshops, and the Bi-State Coordination Committee.

- Coordination and support efforts for transportation entities, agencies and jurisdictions. In FY 2023, RTC anticipates continued coordination with the Washington State Joint Transportation Committee, with the Washington State Transportation Commission, and with WSDOT on statewide transportation plans as listed on page xii of this document. RTC staff will also represent RTC's interests when working with organizations such as the Greater Vancouver Chamber of Commerce and the Columbia River Economic Development Council.
- Year 2023 Budget and Indirect Cost Proposal. (Fall 2022)
- Work with local universities to explore opportunities to procure student project assignments to help develop components of the region's metropolitan transportation planning process.
- RTC staff will participate in training opportunities including transportation webinars and workshops.

(b.1.) Bi-State Coordination: Work Element Objectives

- Coordination with bi-state transportation planning partners including Metro and ODOT. Metro and RTC will continue to implement the Bi-State Memorandum of Understanding between Metro and RTC, both acting as Metropolitan Planning Organizations in the Portland metropolitan region but in two separate states; Oregon and Washington.
- RTC and Metro jointly staff the Bi-State Coordination Committee which at times has served as the communication forum to address transportation and land use issues of bi-state significance. The Committee will meet as needed for topical discussions relevant to the committee's charter.

(b.2.) Bi-State Coordination: FY 2023 Tasks and Products

- Coordination with and participate in Metro's regional transportation planning process and ODOT's transportation planning activities including participation at Metro's transportation committees; IPACT, TPAC and joint MTAC/TPAC meetings. (Ongoing)
- Coordination with Metro, ODOT and Oregon Department of Environmental Quality on performance-based planning, air quality and climate change planning issues.
- Continue to address bi-state transportation strategies and participate in any bi-state transportation studies, such as the Interstate Bridge Replacement (IBR), Columbia Connects study to unlock the potential for equitable development and programs made more difficult by infrastructure barriers, and state and jurisdictional separation in a sub-district of the region near the Columbia River.
- Coordinate with Metro's regional growth forecasting activities and in regional travel forecasting model development and enhancement. There is bi-state interest in Portland/Vancouver population and employment forecasts, transportation plans, freight mobility, and priority projects for federal consideration. The two existing interstate highways now serve business, commercial, freight and personal travel needs, including around 60,000 daily commuters from Clark County to Portland. RTC has particular interest in Metro/ODOT's update to regional mobility corridor policy, tolling and congestion pricing efforts. There is also bi-state interest in rail and marine modes; BNSF rail lines cross the Columbia river between the two states and interest in establishing a ferry service on the Columbia and Willamette rivers between Portland and Vancouver continues.

(c.1.) Public Participation: Work Element Objectives

- Conduct public outreach and solicit public participation in the regional transportation planning process allowing for the earliest public involvement in the transportation planning program.
- Involve and inform all sectors of the public, including the traditionally under-served and under-represented, in development of regional transportation plans, programs and projects. Incorporate public participation at every stage of the planning process and actively recruit public input and consider public comment during the development of the Regional Transportation Plan and metropolitan Transportation Improvement Program.
- Maintain a mailing list of interested citizens, stakeholders, agencies, and businesses.

(c.2.) Public Participation: FY 2023 Tasks and Products

- Participate in public outreach activities related to regional transportation planning programs and projects to increase public awareness of and provide information on regional and transportation issues.
- Hold public outreach activities that may include meetings, virtual meetings and website updates relating to RTC's transportation planning activities including the RTP and regional TIP, in coordination with outreach events and activities hosted by local jurisdictions and WSDOT Southwest Region, WSDOT Headquarters and C-TRAN. Also, conduct public participation efforts for special projects and planning studies led by RTC with outreach tailored to the specific plan or project.
- Regular update to RTC's web site <http://www.rtc.wa.gov> providing public access to monthly RTC Board agenda materials, the Board's CTV coverage, as well as information on planning studies being developed by RTC. The website allows public access to RTC's regularly updated traffic count database as well as RTC published reports. Links are also provided to other transportation agencies and local jurisdictions. The federal transportation act requires that public outreach include visualization techniques including web site content, maps and graphics.
- Document RTC's public participation activities in the annual UPWP report.
- Review the Public Participation Process for effectiveness and Public Participation Plan (December 2020) to determine when the Plan should be updated. When changes are made to the PPP, RTC will follow the procedures outlined in federal Metropolitan Planning guidelines.
- Media communication through press releases and interviews as well as through regular updates to RTC's website on significant issues and outcomes relating to the regional transportation planning process. Media outlets include local newspapers, radio and television stations.
- Respond to requests from various groups, agencies and organizations to provide information and give presentations on regional transportation topics. These requests provide an important opportunity to gain public input and discussion on a variety of transportation issues.
- Support Identity Clark County's efforts to raise awareness and solicit feedback from the public on transportation issues. Identity Clark County is a private, non-profit organization focused on Clark County's community and economic development. RTC will collaborate with Identity Clark County to publish an annual Transportation Alliance Policy statement to publicize transportation priorities for the region.
- Respond to public records requests.

(d.1.) Federal Compliance: Work Element Objectives

- Comply with federal laws that require development of a Regional Transportation Plan, Transportation Improvement Program, development of a Unified Planning Work Program, Congestion Management Process and certification of the regional transportation planning program. Implement the recently passed Bipartisan Infrastructure Bill (2021).
- Ensure that required governing documents, Memoranda of Understanding or Memorandum of Agreement are in place and are regularly reviewed for currency. Currently, MOAs/MOUs are in place between:
 - RTC, WSDOT and C-TRAN (The 314 Agreement was updated, adopted and complete on December 5, 2019)
 - RTC and the air quality agency Southwest Clean Air Agency, and
 - RTC and Metro.
- Report on Title VI activities. The Title VI Plan was first adopted by the RTC Board of Directors in November 2002 (Resolution 11-02-21). FTA Circular 4702.1B outlines reporting requirements and procedures for transit agencies and MPOs to comply with Title VI of the Civil Rights Act of 1964. Compliance with related regulations to Title VI, such as the President's Executive Order 12898 (1994) on Environmental Justice and regulations related to Limited English Proficiency (LEP).
- Comply with and assist partner jurisdictions and transportation agencies in implementing Section 504 of the Rehabilitation Act of 1973 and Americans with Disabilities Act (ADA) of 1990 to ensure the mobility needs of persons with disabilities are comprehensively addressed. RTC has a designated employee to serve as RTC's coordinator for Section 504 and ADA matters, and has a Section 504/ADA nondiscrimination notice posted internally and externally for employees' and the public's information.
- Address environmental issues at the earliest opportunity in the transportation planning process complying with requirements for Planning and Environment Linkage (PEL).
- Conduct consultation, coordination and collaboration with resource agencies to address environmental considerations in regional transportation planning documents.

(d.2.) Federal Compliance: FY 2023 Tasks and Products

- Update MPO self-certification documentation including a certification statement in the regional Transportation Improvement Program (TIP) to self-certify that the regional transportation planning process meets federal laws (late summer/early fall 2022). Address recommendations resulting from the December 2020 federal certification review of RTC as TMA for the Clark County region.
- Adopt the FY 2024 UPWP that describes transportation planning activities to be carried out in the Washington portion of the Portland Vancouver metropolitan area, prepare an annual report on the FY 2022 UPWP and, if needed, provide amendments to the FY 2023 UPWP. The FY 2022 Annual Report is to be published by September 30, 2022 per UPWP guidance and MPO Agreement GCB 1771. The FY 2024 UPWP will be developed in Winter 2022/23 and UPWP amendments on an as-needed basis. Monthly UPWP progress reports with elements and sub-tasks described will be submitted to WSDOT.
- Use updated demographic profile to report on Title VI, LEP, equity and Environmental Justice

(Executive Order 12898) as part of the regional transportation planning process. RTC completes an annual report for Title VI and updates its Title VI Plan as data and information warrants. RTC also commits to continue to assist member jurisdictions in complying with ADA requirements. (Ongoing)

- RTC will periodically conduct an ADA self-evaluation to identify access barriers and method and timeline to remove any identified barriers.
- RTC will consult with Federal, State and Tribal wildlife, land management, and regulatory agencies. As part of the metropolitan transportation planning process, RTC will consult, as appropriate, with agencies responsible for land use management, natural resources, environmental protection, conservation, and historic preservation. Consultation may address local and State conservation plans or maps, and inventories of natural or historic resources, as available. RTC will participate in transportation project scoping meetings for National Environmental Policy Act (NEPA) process, as necessary.

Relationship to Other Work Elements: Regional Transportation Program Coordination & Management

Regional transportation coordination activities are vital to the success of the regional transportation planning program and relate to all UPWP work elements. The UPWP represents a coordinated program that responds to regional transportation planning needs.

FY 2023 Funding: Regional Transportation Program Coordination & Management

<u>FY 2023 Revenues:</u>		<u>FY 2023 Expenses:</u>	
	\$		\$
• Federal FHWA PL	\$129,637	• RTC	\$298,806
• Federal STBG	\$90,250		
• Federal FTA	\$38,580		
• State RTPO	\$28,186		
• Local MPO Funds or Toll Credits	\$12,153		
	\$298,806		\$298,806

Federal Program Funds matched by State RTPO, and/or local MPO Funds and/or Toll Credits

4. TRANSPORTATION PLANNING ACTIVITIES OF STATE AND LOCAL AGENCIES

Federal legislation requires that all regionally significant transportation planning studies to be undertaken in the region are included in the MPO's UPWP regardless of the funding source or agencies conducting the activities. Section 4 provides a description of identified planning studies and their relationship to the MPO's planning process. The MPO/RTPO, WSDOT, C-TRAN and local jurisdictions coordinate to develop the transportation planning work program.

4A. WASHINGTON STATE DEPARTMENT OF TRANSPORTATION, SOUTHWEST REGION

The Washington State Department of Transportation (WSDOT) Southwest Region consists of Clark, Cowlitz, Klickitat, Lewis, Pacific, Skamania, and Wahkiakum counties. In total, these seven counties make up an area of 8,895 square miles in Southwest Washington. WSDOT Southwest Region planning office works directly with 3 tribes, 7 counties, 31 cities, 4 transit authorities, 14 airports, 16 ports, 2 Metropolitan Planning Organizations (MPOs) and 2 Regional Transportation Planning Organizations (RTPOs), bi-state partners in Oregon and multimodal stakeholders on a myriad of transportation issues.

WSDOT Strategic Plan

WSDOT's Strategic Plan includes three goals: Inclusion, Practical Solutions and Workforce Development. This plan continues WSDOT's focus on how the agency makes investments and delivers projects with limited resources.

WSDOT's Strategic Plan features six values, defined as "how we do business" or statements of guiding principles. The values are: safety, engagement, innovation, integrity, leadership and sustainability.

WSDOT Southwest Region planning staff provides functions that support WSDOT's Strategic Plan, along with state and federal transportation planning requirements in the coordination of planning, modeling, data collection and analysis, and programming activities with RTC. When serving on RTC committees, the Southwest Region planning office will look for opportunities to incorporate WSDOT's Strategic Plan into the discussions and decision-making.

FY 2022/23 Work Program Highlights

WSDOT Southwest Region planning office performs several transportation planning and external coordination activities. The activities included below represent multimodal planning strategies within WSDOT's Strategic Plan that focus on transportation planning; they are not inclusive of all WSDOT projects and programs.

Planning and Administration

- Development Review and Growth Management Act Enhanced Collaboration.
 - Coordinate with regional planning staff (RTC) and with cities and counties early in the development and update of comprehensive land use plans, transportation plans and capital facilities plans to comply with Growth Management Act requirements as well as federal and state regulations.

-
- Review and comment on development proposals including the negotiation of developer impacts mitigation measures on the state transportation system.
 - Coordinate access management.
 - Conduct environmental assessments (SEPA/NEPA) reviews and mitigation negotiation.
 - Work with communities and other partners to promote WSDOT's vision of a sustainable and integrated multimodal transportation system by utilizing all available capacity on the system and leveraging our limited resources.
 - Review comprehensive plan updates and amendments, sub-area plans, planned actions, development regulations, etc.
 - Serve as a member of the Statewide Plan Review Work Group.
 - Governor's Executive Order 14-04, Washington Carbon Pollution Reduction and Clean Energy Action.
 - Work with RTC to support the update of local comprehensive plans to produce travel and land-use patterns that maximize efficiency in movement of goods and people, and reduce costs and greenhouse gas emissions.
 - Practical Solutions.
 - Apply practical solutions approaches in all planning efforts with RTC. Practical Solutions is a two-part strategy that includes least cost planning and practical design, to enable more flexible and sustainable transportation investment decisions.
 - Grant Development and Application Review.
 - Assist with the preparation of applications for various grant programs. Activities might include providing technical assistance on reviewing applications for regional processes, provide educational opportunities to local jurisdictions regarding how to apply for WSDOT grants such as webinars or grant checklists.

Regional and Local Planning Coordination

Regional and local planning coordination occurs at both the policy level interacting with local elected officials, legislators, citizens groups, or policy committees; and the technical level with local staffs, technical committees, and citizens groups.

- Assist in the development of regional plans. Help assure consistency among jurisdictions and between state, regional, and local plans.
- Participate with partners on transportation studies, issues, and other coordination related to the bi-state regional transportation system.
- Incorporate tribal concerns and needs into planning studies and transportation plans.
- Coordinate with RTC, tribes, local jurisdictions, ports, transit agencies and state and federal partners in the update and development of various state and regional transportation plans.
- Conduct enhanced collaboration efforts with local governments through continuation of the comprehensive plan review workgroup; analysis of policy issue and proposed resolution;

development of tools, training, guidance and information resources; and periodic reporting on enhanced collaboration efforts.

- Provide transportation planning technical assistance to regional and local agencies.
- Participate in tribal/WSDOT regional, policy and TAC meetings. In this capacity, participate in regional planning activities, grant proposal review/selection, Regional Transportation Plan development, public transportation coordination/development, Coordinated Human Services Transportation Plan development, and other activities.
- Ensure tribal transportation goals and projects are included in WSDOT and regional transportation efforts.

Multimodal Transportation Planning

Work with regional and local agencies in the development and update of the following processes.

- Statewide Transportation Modal Plans
 - The Highway System Plan – WSDOT headquarters will be leading an effort in SFY 2022/23 to update the Highway System Plan. Participation from RTC members on the steering committee and assistance with the community engagement effort will be encouraged. Multimodal Investment Strategy: WSDOT is leading an exploration of how to improve the state’s system for making transportation investment decisions which began in 2020. WSDOT had reached out to RTC staff who has played an active role in this effort. This process will conclude in 2021. Products of this process will include development of a shared problem statement, a vision statement and principles of collaboration.
- Transportation Demand Management (TDM)
- Corridor Analysis Planning
 - Corridor Plans and Studies
 - WSDOT Southwest Region Planning will be initiating a corridor plan for SR 503 in Clark County. WSDOT will partner with SW RTC, Clark County, and the cities of Battle Ground and Vancouver.
 - WSDOT will be undertaking an effort to apply Transportation Systems Management Office (TSMO) principles to WSDOT Planning studies. The goal of this planning effort is to better define TSMO planning within corridors in Washington. The outcomes will include a Transportation Planning Capability Maturity Framework (CMF) and a Guidebook for TSMO Corridor Planning. The CMF will be applied to the SR 503 Corridor Plan as a pilot study.
- Develop current and future travel conditions and recommendations consistent with Results WSDOT, Practical Design and Integrated Scoping. Integrated Scoping is a process for transforming corridor sketch strategies into integrated, multimodal, programmed solutions.
- Scenic Byway Coordination.
- Active Transportation Planning.
 - Assist with facility planning, coordination, and development.
 - Complete Streets and modal integration.

- Public Outreach/Public Involvement Processes.
 - Develop, coordinate and/or implement public information/involvement opportunities by conducting surveys, attending public meetings and hearings, and serving on advisory committees.

Data Collection/Analysis

The majority of the region transportation planning activities require some degree of research and/or data collection including demographics, travel behavior, and/or transportation system performance.

- Collect and analyze modal (pedestrian, bicycle, passenger, and freight) data for respective corridor studies, partner agencies, and others.
- Collaborate with partner agencies in local multimodal data collection.
- Analyze the collected/researched transportation data for use in transportation planning studies.
- Exchange information on current conditions and travel forecasts for a variety of transportation modes, with emphasis on cost-effective and efficient multimodal solutions.
- In coordination with RTC and local partners contribute to developing and implementing plans and activities related to Travel Demand Management/Transportation System Management.

Travel Demand Model

- Participate in the development of the Portland/Vancouver Metropolitan Travel Demand Model.
- Collaborate with RTC and local governments to ensure data collection supports their multimodal planning and modeling efforts.
- Participate in the development of a statewide multimodal travel demand model to help us better understand where people live, how they travel around the state, and how future projects and land use changes may affect it.
- Assist area engineering and traffic offices with the model review, development, and maintenance for select state facilities.
- Continue to assist with model's post-processing of future year volumes.

4B. C-TRAN

C-TRAN has identified the following planning elements for the Unified Planning Work Program (UPWP) FY 2023 (July 2022 through June 2023):

Regional Participation

C-TRAN will coordinate its transit planning with other transportation planning activities in the region in collaboration with the Southwest Washington Regional Transportation Council (RTC). C-TRAN will continue to work with the RTC, WSDOT, city, county and regional agencies, and other transit providers on multi-modal planning, air quality analysis, land use and transportation system planning. C-TRAN will also participate in various regional and bi-state (Washington and Oregon) transportation-related committees and task forces.

Regional Transportation Planning

C-TRAN will be involved in the following regional planning and engineering studies during FY 2023:

1. Participate in Interstate Bridge Replacement Program (IBRP) and Oregon Department of Transportation (ODOT) Toll Program project specific executive, advisory, and technical committees and regional planning efforts with WSDOT and ODOT.
2. Regional Transportation Plan and Transportation Improvement Program: C-TRAN will participate in developing revised and updated regional plans and programs.
3. Local System Planning: C-TRAN will continue to work with local partners to update local transportation system plans and coordinate with local plans and project implementation.

Transit Planning

C-TRAN will continue to move forward on projects identified in the adopted 20-Year Transit Development Plan, C-TRAN 2030. The list of projects under consideration over the next two years include:

- Highway 99 Bus Rapid Transit (BRT) – C-TRAN will begin planning and design of the Highway 99 BRT project in collaboration with the City of Vancouver, Clark County, RTC, WSDOT, and other regional partners.
- Fourth Plain BRT Extension – C-TRAN will begin planning and design of the Fourth Plain BRT Extension project City of Vancouver, RTC, WSDOT, and other regional partners.
- Bus Stop Improvement Program – C-TRAN will continue implementation of its annual bus stop assessment and improvement program.
- Title VI Program – C-TRAN will continue implementation of its Title VI program including regular service equity analyses, fare equity analyses, and implementation of the 2021 Title VI Program Update.
- Conduct a comprehensive system-wide survey of riders.

Short-Range Planning: Following public review and input in 2022, the 2022-2027 Transit Development Plan will identify capital and operational changes planned over the six-year period.

Service Performance Analysis and Evaluation: C-TRAN will continue ongoing service evaluation and planning to ensure service that meets the agency mission to provide safe, efficient, reliable mobility options. This will include all modes: fixed route, demand response, and vanpool.

Service Performance Analysis and Evaluation: C-TRAN will continue ongoing service evaluation and planning to ensure service that meets the agency mission to provide safe, efficient, reliable mobility options. This will include all modes: fixed route, demand response, and vanpool.

Technology Improvements:

- Vancouver Area Smart Trek (VAST): C-TRAN will continue working with regional partners on the planning and implementation of Intelligent Transportation System technology. Projects include video sharing, data sharing through PSU Portal, and a fiber-sharing plan.
- Improved Bus Technology: C-TRAN will continue to improve the quality and scope of real-time GTFS data availability. C-TRAN is also exploring ways to provide riders with real-time trip planning and service alerts capabilities.

4C. CLARK COUNTY AND OTHER LOCAL JURISDICTIONS

CLARK COUNTY has identified the following transportation planning activities:

- Develop a Transportation System Plan.
- Create guidance for diversity, equity and inclusion in transportation planning and programming.
- Create guidance for environmental justice implementation in transportation planning and programming.
- Develop neighborhood and sub-area circulation plans for selected unincorporated urban areas in order to reduce direct access to classified arterials and to serve local trips on the local street system.
- Develop a neighborhood traffic management program/plan.
- Create a framework for an Active Transportation Plan.
- Implement the transportation element of the 2016 Comprehensive Plan including the 20-year Capital Facilities Plan.
- Continue regional coordination with RTC.
- Work with the Clark Communities Bicycle & Pedestrian Advisory Committee and other stakeholders to update and implement the Bicycle & Pedestrian Plan.
- Implement the transportation and land use recommendations in the Clark County Aging Readiness Plan.
- Revise the Clark County Capital Facilities Plan to account for needed improvements that are necessary for our growing population.
- Assess and review public/private share contributions for the traffic impact fee program.
- Update the Arterial Atlas.

-
- Update the Transportation Improvement Program (TIP)/annual construction program.
 - Ongoing refinement of the road standards, including the following components: cross sections, alternate road design standards, cross-circulation policies, and land-use friendly road standards.
 - Ongoing work with the ADA transition plan.
 - Research implementation options for the county to use permeable pavement.
 - Coordinate transportation planning efforts with various jurisdictions, elected officials and the public.
 - Unite Intelligent Transportation System (ITS) with transportation planning to provide traffic data in future plans.

CITY OF VANCOUVER has identified the following planning studies and other activities:

Regional Planning and Coordination

- Participate in RTC's standing committees such as RTAC and VAST and serve on project specific committees.
- Participate in C-TRAN's project and planning processes including but not limited to the Mill Plain BRT project, Highway 99 BRT project, Fisher's Landing TOD, and regular Transit Development Plan updates.
- Serve on WSDOT project-specific technical advisory committees, such as those for the SR-501 Freight Corridor project and SR-14 widening project, and participate in regional planning coordination efforts.
- Serve on Metro's TPAC, JPACT, MTAC, MPAC and other technical advisory committees in the Portland metro region.
- Coordinate transportation planning with other local agencies including Clark County, Camas, and Washougal.
- Participate in Interstate Bridge Replacement Project (IBRP) and I-5 and I-205 Toll Projects regional planning efforts with WSDOT and ODOT.

Transportation Planning

- Continue the update of the City's Transportation System Plan.
- Implement the Westside Bike Mobility Project.
- Columbia Mobility Project - evaluate its performance over time.
- Continue to evaluate the McLoughlin Boulevard Safety Improvement Project and implement recommendations.
- Study the Fourth Plain Boulevard Corridor for potential safety improvements.
- Study SE 34th Street between 164th and 192nd for potential safety improvements.
- Study Ft. Vancouver Way between Mill Plain and Fourth Plain for potential safety improvements.
- Study the 112th Avenue Corridor for potential safety improvements.
- Study SE McGillivray Boulevard between Chkalov Drive and 164th for potential safety improvements.

-
- Advance planning and design work for the 32nd Avenue Industrial Access Project.
 - Support the Columbia Connects Regional Study.
 - Support the development of the Evergreen and Grand Commercial Corridor Strategy and implementation efforts.
 - Continue implementation of the Affordable Housing Task Force Recommendations.
 - Continue implementation of Fourth Plan Forward.
 - Implement the Heights District and Subarea Plans.
 - Update the City of Vancouver Comprehensive Plan.
 - Update the City's Critical Areas Ordinance.
 - Plan for redevelopment of the Operations Center site on the Fourth Plain Corridor.
 - Continue development and implementation of the Complete Streets Program.
 - Continue to seek grant funding for projects, programs, and plans.
 - Continue to support capital and safety improvement projects led by other City work groups.
 - Continue management and implementation of the Neighborhood Traffic Calming Program.
 - Support the Transportation and Mobility Commission.

Transportation Demand Management

- Administration of countywide Commute Trip Reduction (CTR) Program and provision of direct services to affected CTR employers.
- Participate in the WSDOT statewide TDM technical advisory committee.
- Manage new GetThereSWSWashington website for regional trip tracking and carpooling.
- Develop a residential transportation demand management program.

CITY OF CAMAS has identified the following:

- Transportation Improvement Program (TIP) – Annual Update.
- Citywide Transportation Plan and Capital Improvements Plan.
- Transportation Impact Fee (TIF) Update.
- North Shore Subarea Plan.
- SR-500 Corridor Alternatives Analysis (NW Lake Road to Leadbetter Road).

CITY OF WASHOUGAL has identified the following studies:

- Continue coordination with Legislature, WSDOT, the Port of Camas/Washougal, City of Camas and RTC on plans for widening the Camas West Slough Bridge on SR-14.
- The city will continue design and NEPA for a grade separated underpass at 32nd Street under the BNSF rail line.
- Seek grant funding and direct appropriations (state and federal) for 32nd Street grade separation under BNSF mainline, 32nd Street/Stiles Road Improvements, and A-Addy Extension and 27th/Index Street improvements in the town center area.
- Review the city's Transportation System Plan in coordination with planning efforts on a Town Center Subarea Plan and Planned Action Ordinance.

- Transportation Improvement Program (TIP) – Annual Update.
- Complete an ADA Transition Plan

CITY OF BATTLE GROUND has identified the following planning studies:

- Complete annual revision to the City's Six-Year Transportation Improvement Program.
- Complete a city-wide Transportation System Plan update.
- Complete a city-wide Non-Motorized Action Plan.
- Complete a city-wide ADA Transition Plan.

CITY OF RIDGEFIELD has identified the following planning studies:

- Complete annual revision to the City's Six-Year Transportation Improvement Program.
- Complete revisions to the City's Transportation Capital Facilities Plan as necessary to remain consistent with yearly updates to the City's Comprehensive Plan.
- Complete reviews of the City's Transportation Impact Fee Program as necessary to support revisions to the Transportation Capital Facilities Plan.
- Continue to work with WSDOT on the improvement of the SR-501 corridor and future access points onto the highway, including the remaining intersection improvement project (roundabouts) at the intersection of SR 501 with 51st Avenue and adjacent frontage improvements and widening.
- Begin construction of the extension of Pioneer Street east from 65th Avenue to Union Ridge Parkway.
- Complete planning study of the 219th Street extension west of I-5 in conjunction with the County and WSDOT.
- Work with WSDOT to complete the Discovery Corridor planning study.
- Begin planning study for the extension of S 35th Avenue from Pioneer to S 10th Way.
- Complete a City-wide ADA transition plan.

CITY OF LA CENTER has identified the following planning studies:

- Continued design of Brezee Creek Culvert Replacement and 4th Street widening project funded by Legislative appropriation.
- Shoreline Master Plan update.
- Timmens Landing Subarea Master Plan.
- Town Center Subarea Master Plan.
- Update La Center Junction Plan Zoning District Ordinance.
- Update Comprehensive Plan.

PORT OF VANCOUVER:

- Complete assessment of the Ports marine structures (docks) to determine what improvements/repairs need to be made in upcoming years.
- Partner with City of Vancouver to finalize engineering and seek grant funding for extension of 32nd Avenue to 78th Street.
- I-5 Improvements: Support any improvements to the I-5 Corridor that facilitates freight mobility

- Advance development of Terminal 1 waterfront blocks for commercial and residential uses.
- Bidding and construction of Port of Vancouver Renaissance Trail extension.
- Complete with the USACE (US Army Corps of Engineers) a Draft Environmental Impact Statement for the continued maintenance of the Columbia River Channel for the next 20 years.

PORT OF RIDGEFIELD:

- Initiate project scoping, planning and design for a pedestrian over-crossing in the general vicinity of Division Street in downtown Ridgefield – the project would provide safe, direct, ADA compliant pedestrian access to the Ridgefield waterfront, port property and federally owned lands of the Ridgefield National Wildlife Refuge.

PORT OF CAMAS-WASHOUGAL:

- I-5 Improvements: Support improvements to I-5 Corridor that facilitates freight mobility.
- Continue coordination with WSDOT and RTC on plans for Phase 2 Access Improvements: 27th and 32nd Street improvements, rail overpass and connectors.
- SR-14/Camas Slough Bridge was re-scoped to address the even more critical SR-14 / I-205 to 164th Avenue widening, to address acute corridor congestion thus benefiting the cities of Washougal, Camas and Vancouver.
- Funds were re-allocated from the SR-14/Camas Slough Bridge (\$45M) to SR-14/ I-205 to 164th Avenue to address acute corridor congestion in this highway segment. Improving the congested highway segment provides benefits for access to Washougal, Camas and Vancouver. Once the improvements are made, focus should again be on improvement needs of the SR-14/Camas Slough Bridge.
- Seek and support funding for upgrade to the Port's rail spur into the industrial park.

COWLITZ WAHAKIYAKUM COUNCIL OF GOVERNMENTS (CWCOG)/CITY OF WOODLAND:

Woodland/Lewis River Bridge Study: Continue stakeholder engagement to assess the need to proceed with Phase 2 of the Woodland Arterial Study to further consider an Interstate 5 parallel route connecting Woodland to NW 319th Street near La Center and a new Lewis River bridge. This phase of work would follow the recommendation of the previous work effort. Stakeholders include the Southwest Washington Regional Transportation Council (RTC), the Cowlitz Tribe, City of Woodland, Port of Woodland, and Cowlitz and Clark Counties. (Excerpt from CWCOG's draft FY 2023 UPWP).

FY 2023 SUMMARY OF EXPENDITURES AND REVENUES: RTC

RTC'S SFY2023 Unified Planning Work Program Proposed Budget
(MPO / RTPO)

FUNDING PLAN: Subject to Amendment		NOTES	FHWA - PL					FHWA - STBG					FTA - 5303					RTPO SK & KL	STATE No Match %	TASK FUNDING SUMMARY						
Task Code	Task Description		100%	PL 86.5%	MATCH 13.5%		100%	STBG 86.5%	MATCH 13.5%		100%	FTA 86.5%	MATCH 13.5%		FEDERAL	*STATE - RTPO	State-Other			LOCAL or Toll Credits	TOTAL					
			Total	PL	RTPO	TOLL CREDIT	LOCAL	Total	STBG	RTPO	TOLL CREDIT	LOCAL	Total	FTA	RTPO	TOLL CREDIT	LOCAL			Skamania Klickitat	STATE					
I	REGIONAL TRANSPORTATION PLANNING PROGRAM																									
A	Regional Transportation Plan		244,525	211,514	26,423	6,588	*	170,231	147,250	*	22,981	*	72,770	62,946	*	9,824	*					421,709	26,423	39,393	487,526	
B	Transportation Improvement Program		110,430	95,522	10,569	4,339	*	76,879	66,500	*	10,378	*	32,864	28,427	*	4,437	*					190,449	10,569	19,154	220,173	
C	(i) Congestion Management Process, including (ii) Transportation Data Study (and Data Acquisition)		47,327	40,938	6,389	*	*	32,948	28,500	2,279	2,170	*	14,084	12,183	1,901	*	*					81,621	10,570	2,170	94,361	
D	Vancouver Area Smart Trek							346,821	300,000		46,821	*										300,000		46,821	346,821	
E	Skamania and Klickitat RTPO							433,526	375,000		58,526	*										375,000		58,526	433,526	
F	Human Services Transportation Plan	1																42,279					42,279		42,279	
G	Interstate Bridge Replacement Project: Technical Support	2																20,000				20,000			20,000	
	Regional Planning Total		402,283	347,974	43,382	10,927	0	1,060,405	917,250	2,279	140,876	0	119,718	103,556	1,901	14,261	0	42,279	220,000	0	200,000	1,368,780	89,841	220,000	166,064	1,844,685
II	DATA MANAGEMENT, TRAVEL MODEL FORECASTING & TECHNICAL SERVICES																									
A	Regional Data, Travel Model Forecasting & Technical Services		236,637	204,691	31,946	*	*	164,740	142,500	16,680	5,560	*	70,422	60,915	9,507	*	*					408,106	58,133		5,560	471,799
B	Household Travel Survey	3						520,231	450,000		70,231	*										450,000	0		70,231	520,231
	Data Total		236,637	204,691	31,946	0	0	684,971	592,500	16,680	75,791	0	70,422	60,915	9,507	0	0	0	0	0	0	858,106	58,133	0	75,791	992,030
III	TRANSPORTATION PROGRAM COORDINATION & MANAGEMENT																									
A	Regional Transportation Program Coordination and Management		149,870	129,637	20,232	*	*	104,335	90,250	1,932	12,153	*	44,601	38,580	6,021	*	*					258,467	28,186		12,153	298,806
	Coordination and Management Total		149,870	129,637	20,232	0	0	104,335	90,250	1,932	12,153	0	44,601	38,580	6,021	0	0	0	0	0	0	258,467	28,186	0	12,153	298,806
	UPWP TOTAL	4	788,789	682,302	95,560	10,927	0	1,849,711	1,600,000	20,891	228,820	0	234,741	203,051	17,430	14,261	0	42,279	220,000	0	2,485,353	176,160	220,000	254,008	3,135,521	

7/11/2022

* Match to be contributed from one of three sources. Programming the funds related to these sources is dependent on the availability of Toll Credits.

- RTPO
- Toll Credits (+- any rounding errors)
- Local Match

- 1: Human Services Transportation Plan: Funding was provided and included in the FY2022 Amendment dated 7/6/21. Funds are available for two years. Treated as Carry Forward funds.
- 2: Interstate Bridge Replacement Project: Additional Funding for this project is proposed but not yet executed. Funding Estimate shown.
- 3: Household Travel Survey: Funding was provided and included in the FY2022 UPWP. Funds are available for multiple years. Treated as Carry Forward funds.
- 4: UPWP: While the amount of \$3,164,421 is in line with RTC's Calendar year budget of \$2,899,121 STBG project I . C (ii) will increase the budget and use a consultant. An unrelated expected increase in cost of up to 4% due to inflation is expected. Any additional funds made available can be utilized and matched. Please see the "Unfunded Planning Activities List in the report preamble or contact Shari.Harer@rtc.wa.gov for more details.

Consultant Assistance on RTC'S FY 2023 Work Elements
Consultant Assistance on RTC'S FY 2023 Work Elements

Task Code	Work Element	Total RTC Budget for Work Element	Consultant Assistance	Consultant Assistance - Notes	Consultant(s) Identified or Project Status
1C.(i)	Congestion Management Process	\$94,361	\$25,000	Estimated base amount per year	Quality Counts
1C.(ii)	Transportation Data Study	\$346,821	TBD		TBD
1D.	Vancouver Area Smart Trek (VAST)	\$433,526	\$130,000		DKS
2B.	Household Travel Survey	\$520,231	TBD	Procurement for the HH Travel Survey consultant is led by Lane COG	TBD

7/11/2022

STBG Program Funds Management

Task Code	Task Description	Managing Office	
I	REGIONAL TRANSPORTATION PLANNING PROGRAM	Local Programs	TRIPO
A	Regional Transportation Plan		X
B	Transportation Improvement Program		X
C	(i) Congestion Management Process, including (ii) Transportation Data Study (and Data Acquisition)		X
D	Vancouver Area Smart Trek		X
II	DATA MANAGEMENT, TRAVEL MODEL FORECASTING & TECHNICAL SERVICES	Local Programs	TRIPO
A	Regional Data, Travel Model Forecasting & Technical Services		X
B	Household Travel Survey	X	
III	TRANSPORTATION PROGRAM COORDINATION & MANAGEMENT	Local Programs	TRIPO
A	Regional Transportation Program Coordination and Management		X

7/11/2022

FY 2023 Expenditures and Revenues by Fund Type

Expenditures and Revenue by Fund Type

Federal Funds

Funding Source	REGIONAL TRANSPORTATION PLANNING PROGRAM	DATA MANAGEMENT, TRAVEL MODEL FORECASTING & TECHNICAL SERVICES	TRANSPORTATION PROGRAM COORDINATION & MANAGEMENT	Total Estimated SFY 2023 Expenditures	Carry Forward from 2022	Estimated New Revenue for SFY 2023	Total Revenue Available	Est. Carry Forward to 2024
FHWA PL	347,974	204,691	129,637	682,302	0	682,302	682,302	0
Local Match or Toll Credit 13.5%	10,926	0	0	10,926	0	N/A	N/A	
FTA 5303	103,556	60,915	38,580	203,051	0	203,051	203,051	0
Local Match or Toll Credit 13.5%	14,261	-	0	14,261	N/A	N/A	N/A	
FHWA STBG Planning Federal Funds*	242,250	142,500	90,250	475,000	N/A	475,000	475,000	N/A
Local Match or Toll Credit 13.5%	60,717	5,560	12,153	78,430	N/A	N/A	N/A	
Total	779,684	413,666	270,620	1,463,970	-	1,360,353	1,360,353	-

State Funds

Funding Source	REGIONAL TRANSPORTATION PLANNING PROGRAM	DATA MANAGEMENT, TRAVEL MODEL FORECASTING & TECHNICAL SERVICES	TRANSPORTATION PROGRAM COORDINATION & MANAGEMENT	Total Estimated SFY 2023 Expenditures	Carry Forward from 2022	Estimated New Revenue for SFY 2023	Total Revenue Available	Est. Carry Forward to 2024
RTPO	89,841	58,133	28,186	176,160	N/A	176,160	176,160	N/A

See also: RTC'S FY2023 Unified Planning Work Program Proposed Budget.

* Additional STBG funds are \$300,000 for the **Transportation Data Study** and \$375,000 for the **VAST program**.

Additional Matching is available should more opportunities arise.