

# Regional Active Transportation Plan RTC

Project Completed: September 2021

## Project Information

RTC funding: \$100,000 in STBG Funds

Total Project Cost: \$115,607

Project Type: Active Transportation Planning

Project Length: N/A

Functional Class: all classification types

Daily Traffic Volume: varies by facility

## Project Description

Active transportation is human-scale and often human-powered transportation getting from one place to another using walking, cycling or rolling. The Regional Active Transportation Plan (RATP) was commissioned by RTC to address objectives, policies, goals, the regional active transportation system network, programs and projects. It describes the status of walking, bicycling and rolling as well as access to transit in the Clark County region.

The RATP will become an integral part of the Regional Transportation Plan for Clark County at its next update before the end of 2023. Information from local Transportation System Plans and Washington State's Active Transportation Plan will be incorporated into the RATP before it becomes a part of the RTP.

## Project Benefits

- This is the first Regional Active Transportation Plan for the Clark County region providing a framework, methodologies, and base GIS mapping that can be carried into subsequent RATP updates.
- The Plan provides an outline of the benefits of active transportation and recommendations for active transportation modes in the region with consideration of health and safety, accessibility, functionality, equity, quality of life and regional coordination and connectivity.
- A needs assessment takes into account user demand for active transportation and equity and safety considerations. These analyses can help decision-makers understand where to target resources to have the greatest impact on improving active transportation in Clark County.

## Project Funding

Phase	Year	Federal Funds	Other Funds	Total
Design	2019/21	100,000	15,607	115,607
Right of Way				
Construction				
Total		\$100,000	\$15,607	\$115,607



SW Washington Regional Transportation Council

Regional Active Transportation Plan  
for Clark County, WA

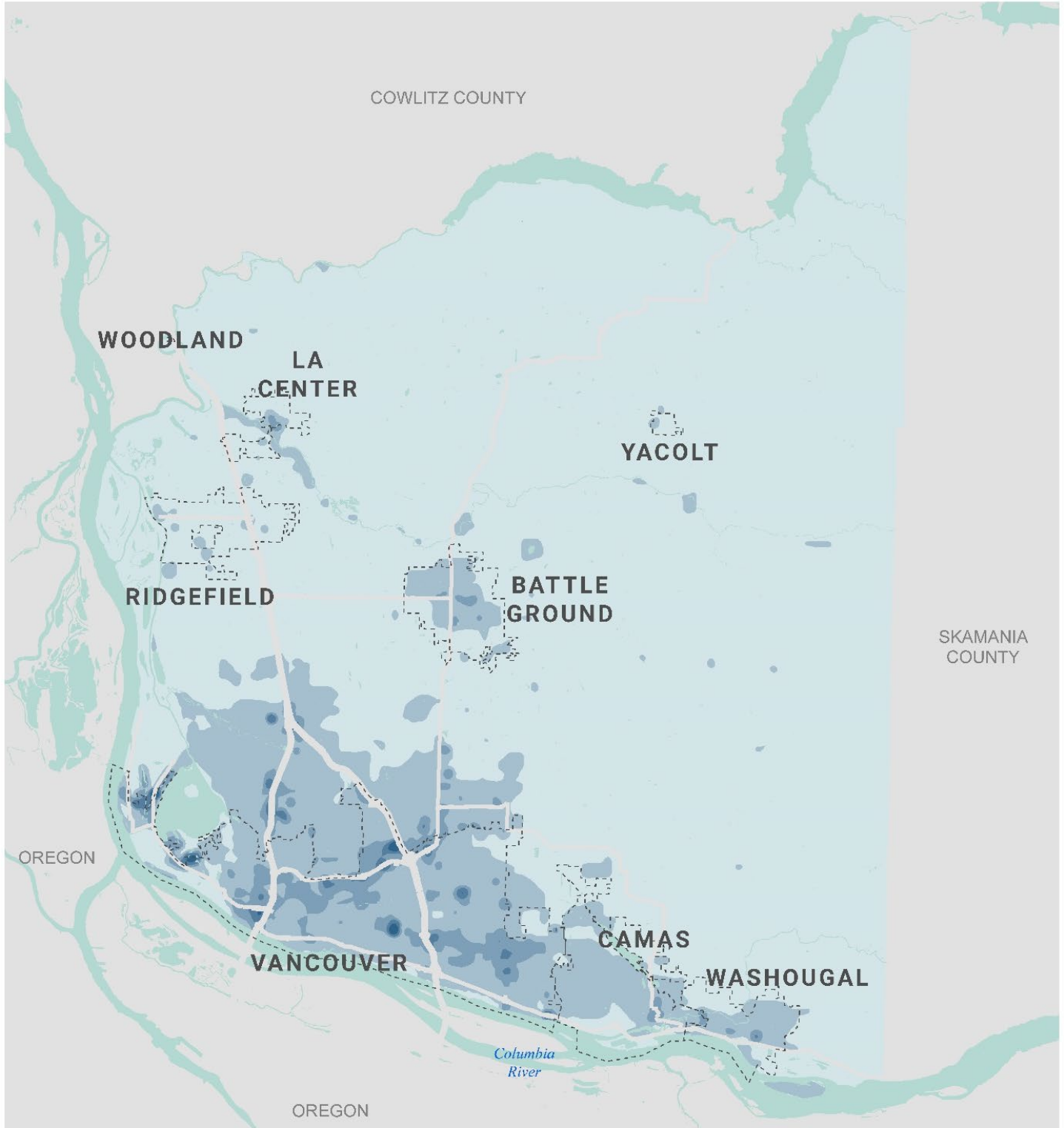
September 2021

alta



## Project Map: Composite Active Transportation Demand Map

The combined distribution of residents, employment, recreational opportunities, schools, retail/services, and transit is presented below as a composite demand map. The darker shades of blue on this map indicate a high demand for walking and biking trips based on the volume and density of trip generators and attractors.



Data provided by WSDOT; map produced September 2021