

# NE 10th Avenue Corridor - 3 Projects

312522 NE 10th Avenue (NE 141st Street - NE 149th Street)  
323322 NE 10th Avenue (NE 149th Street - NE 154th Street)  
370922 NE 10th Avenue (NE 154th Street - NE 164th Street)



## Clark County

### Project Goal:

- Completing roadway gap, creating a new north/south corridor between NE 139th Street and NE 179th Street; improving connectivity and lessening congestion on surrounding transportation networks.
- Improving traffic flow and enhancing level of service by widening the roadway to a two-lane Urban Major Collector with continuous center turn lane.
- Enhancing pedestrian and bicyclist safety by adding continuous sidewalks and bike lanes.
- Installing signalization at the NE 149th Street intersection; including traffic surveillance data collection and communications.
- Improving sight distance by removing clear-zone hazards and obstructions, as well as leveling roadway hills.
- Upgrading water, sanitary sewer, and stormwater management utilities.

### Project Information

**Federal Funding Program:** STP Urban Arterial Program

**RTC Awarded Funding:** \$8,300,000

**Total Project Cost:** \$40,092,000

**Project Type:** Road Improvement

**Project Length:** 1.2 miles

**Function Classification:** Urban Major Collector

**Daily Traffic Volume:** 8,300 ADT

### Project Description

The NE 10th Street Corridor improvements were completed in 3 projects over an 11-year period from 2011-2022. The projects completed a roadway gap on NE 10th Avenue between NE 154th and NE 164th Streets by constructing a new bridge over Whipple Creek. The result was a new north/south corridor between NE 139th and NE 179th Streets that improved connectivity and lessened congestion on surrounding transportation networks. The Projects completely reconstructed and widened a 1.2-mile section of rural two-lane roadway to a two-lane Urban Major Collector standard with a continuous center turn lane, continuous sidewalks, and bicycle lanes. Signalization was installed at the NE 149th Street intersection including integrated communication links, traffic surveillance and data collection. Through partnerships with local utilities, outdated water and sanitary sewer were upgraded to meet the area's growth needs. Stormwater management was improved by implementing treatment to meet current regulatory standards.

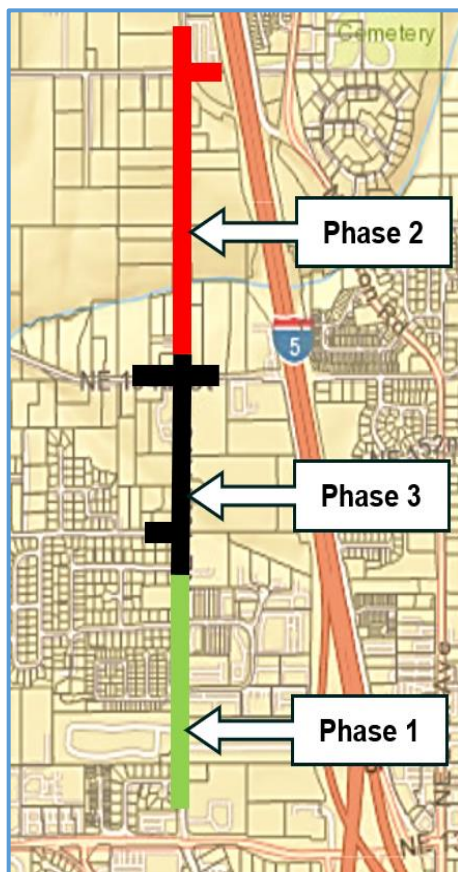
### Funding for All 3 Projects

Phase	Year	Federal Funds	Other Funds	Total
PE	2010-2020	\$1,340,000	\$3,809,000	\$5,149,000
ROW	2011-2020	\$0	\$5,087,000	\$5,087,000
CN	2014-2022	\$6,960,000	\$22,896,000	\$29,856,000
Total		\$8,300,000	\$31,792,000	\$40,092,000

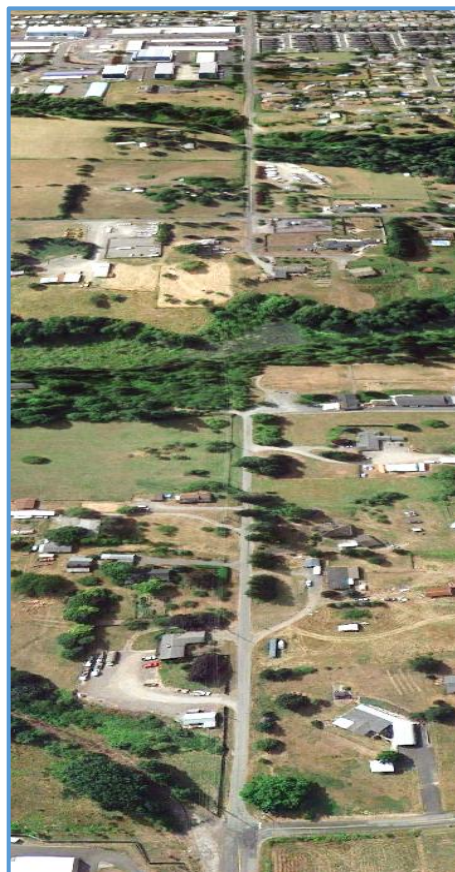
## Project Outcome Details

- Completing a roadway gap, creating an additional north/south corridor between NE 139th and NE 179th Streets.
- Improving connectivity and lessening congestion on surrounding transportation networks.
- Adding capacity, improving traffic flow, and enhancing level of service by widening the roadway to include a continuous center turn lane and bicycle lanes.
- Enhancing pedestrian and bicyclist safety by adding continuous sidewalks and bike lanes.
- Installing traffic signal at NE 10th Ave/NE 149th St intersection to better manage vehicle and pedestrian traffic.
- Constructed a bridge over Whipple Creek, completing connection between NE 139th Street and NE 179th Street.
- Improved traffic flow and level of service by widening this section of NE 10th Avenue to a two-lane major collector standard with continuous center turn lane.
- Safety along the corridor was improved by removing or relocating clear-zone hazards and obstructions, increasing sight distances including leveling the roadway hills.
- Traffic flows and level of service were improved by installing real time traffic surveillance equipment, interconnecting signal systems, and implementing active 24/7 data collection.
- By partnering with local utilities, outdated water and sanitary sewer were upgraded, increasing capacity for current and future growth. Stormwater management was improved by implementing treatment to meet current regulatory standards. Overhead utilities were protected by relocating and placing underground as needed.

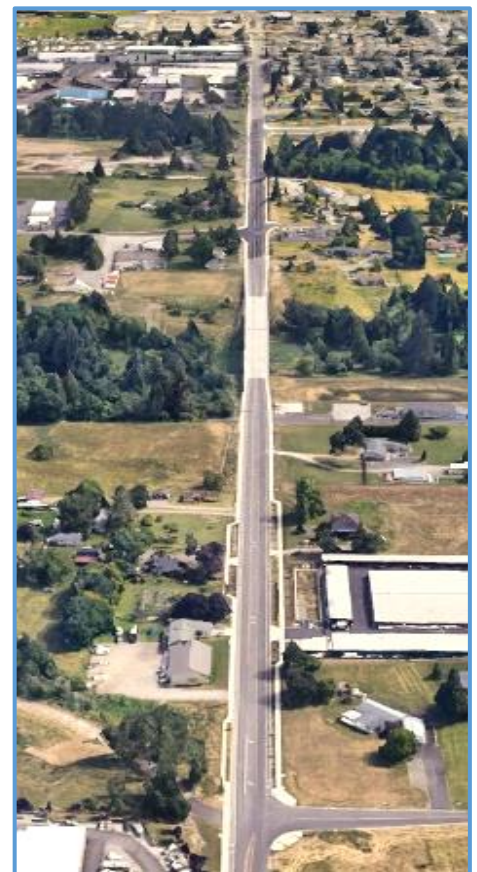
## Vicinity Map



Phase Map  
NE 10th Avenue Corridor



Before  
NE 10th Avenue Corridor  
Looking South



After  
NE 10th Avenue Corridor  
Looking South

**312522 NE 10th Avenue (NE 141st Street - NE 149th Street)**



**Before**  
NE 10th Avenue at NE 149<sup>th</sup> Street  
Looking South



**Construction**  
NE 10th Avenue at NE 149<sup>th</sup> Street  
Looking South



**After**  
NE 10th Avenue at NE 149<sup>th</sup> Street  
Looking South

**323322 NE 10th Avenue (NE 149th Street - NE 154th Street)**



**Before**  
NE 10th Avenue near NE 148<sup>th</sup> Street  
Looking North



**Construction**  
NE 10th Avenue near NE 148<sup>th</sup> Street  
Looking North



**After**  
NE 10th Avenue near NE 148<sup>th</sup> Street  
Looking North

**370922 NE 10th Avenue (NE 154th Street - NE 164th Street)**



**Before**  
NE 10th Avenue at Whipple Creek  
Looking North



**Construction**  
NE 10th Avenue at Whipple Creek  
Looking North



**After**  
NE 10th Avenue at Whipple Creek  
Looking North